



Instantor[®]

GAS
Copper Press Fittings



Multi-Layer Pipe
& Fittings



WATER
Copper Press Fittings



Stainless Steel Pipe
& Press Fittings



MARKET LEADERS IN PRESS SOLUTIONS

Press System Solutions

With a heritage dating back to 1926, Instantor is a recognised market-leading manufacturer and supplier of innovative, certified heating and plumbing products.

QUALITY WITHOUT COMPROMISE

Products are designed and made to last and undergo rigorous testing and quality control procedures.

COMMITTED TO INNOVATION

We continually challenge conventional thinking to provide products that are quicker and easier to install and that provide true fit-and-forget solutions.

EXCEPTIONAL SERVICE

Customer support is provided through multiple channels with a dedicated team for after sales and an experienced technical department to help with any queries.

TRUSTED BY THE TRADE

Instantor has been trusted by the trade for almost a century and is the first company to offer a full range of press fit solutions for every application.

DEDICATED TO EXCELLENCE

All Instantor Press Systems are accompanied by free competency training and certification, carried out by our own in-house qualified plumbing technicians.



www.instantor.ie

Contents



Instantor[®]
Press System



Multilayer Pipe &
Press Fittings

04



Instantor[®]
Copper Press - Water



Imperial & Metric
Fittings for Water
Applications

22



Instantor[®]
Copper Press - Gas



Imperial & Metric
Fittings for Gas
Applications

34



Instantor[®]
Stainless Steel Press



Press Fittings & Pipe
for Gas & Water
Applications

42



Instantor[®]
Tools



Pressing Tools, Jaws
& Accessories

58



Instantor[®]

Press System

INSTANTOR
PRESS SYSTEM



Instantor Press Fittings can be installed with confidence. The system comes with a reassuring 10-year guarantee and the materials are guaranteed for 50 years.

Launched in 2015, and underpinned by ongoing research and development, the range has grown from strength to strength to provide a comprehensive portfolio of products.

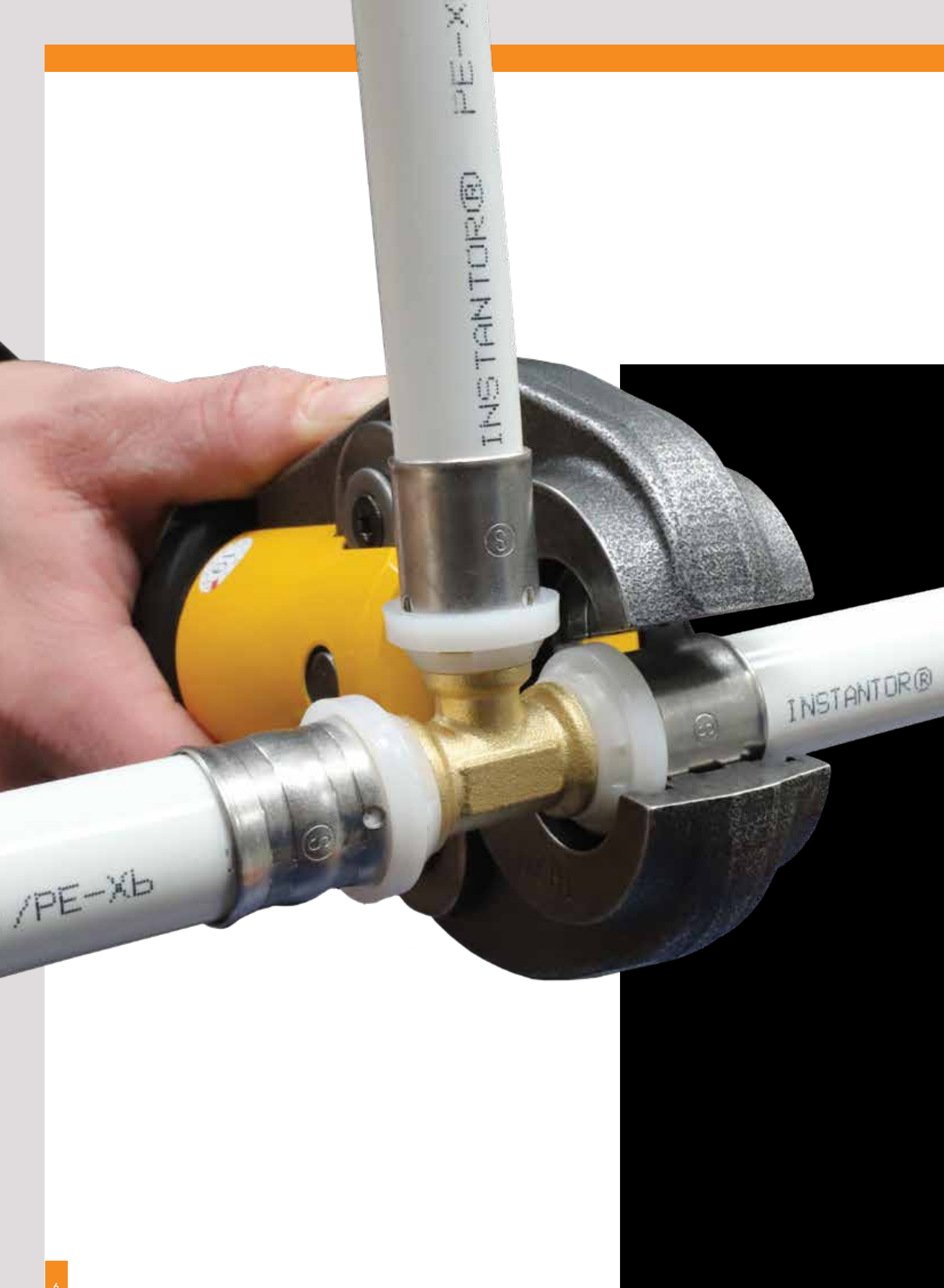
The Instantor Press System is quick and easy and uses a press tool to crimp the fitting securely on to the pipe. This removes the need for heat based methods such as welding and soldering and can be completed in three simple steps - Cut, Calibrate and Press.

Instantor Pex-Al-Pex is a butt-welded multilayer pipe for use in potable water, underfloor heating and all general heating and plumbing applications. Available in sizes up to 63mm in straight lengths and up to 32mm in coils.

Our Pex-Al-Pex pipe also comes with a 10 year guarantee on materials and a 50-year guarantee on the system. Compliant products are an essential element to the Instantor inventory, within the range there is an insulated multi-layer pipe that features increased insulation and Fire Classification EL (EN13501-17:2007 A1:2209). Compliant with Part L Domestic Table 20.









Instantor[®]

Press System

FEATURES

- **CERTIFIED** - WRAS, KIWA & NSAI Approval on Fittings & Pipe
 - **PREMIUM MATERIALS** - CW617N Brass Body, Stainless Steel 304 Sleeves & EPDM O-Rings
 - **QUICK TO INSTALL** - Installation complete in just 3 steps. Cut, Calibrate & Press
 - **LEAK FREE JOINTS** - Inspection window to check for correct pipe insertion
 - **EXTENSIVE OFFERING** - Sizes from 16mm - 63mm to suit domestic, commercial & industrial applications
-
- **FLEXIBLE PIPE** - Lightweight pipe that maintains its memory when bent
 - **BUTT WELDED** - Providing a solid & resilient finish which is 100% oxygen & water vapour tight.
 - **DURABLE** - Withstands high temperatures up to 95°C

INSTALLATION INSTRUCTIONS



CUT

1. Cut the pipe squarely to desired length using an appropriate cutting tool.



CALIBRATE

2. Insert the reamer into the cut pipe and rotate, pushing slightly to remove all burrs and rough edges. NOTE - A poorly calibrated pipe could damage the O-Rings on insertion.



PRESS

3. Connect the pipe and fittings and check pipe is fully inserted in the inspection windows. The white of the pipe must be viewable through these holes. DO NOT USE SEALING AGENTS SUCH AS PTFE TAPE OR JOINTING COMPOUND. Use TH Profile Jaws to press.

TECHNICAL SUMMARY

- **Max Operating Pressure:** 10 bar
- **Max Operating Temperature:** 95°C
- **Max Peak Temperature** (at 1 hour) : 110°C
- **Application Class:** 2/6 bar, class 5/6 bar
- **Profile:** TH
- **WRAS Approval:** #2304341

Fittings

IP10 Straight Coupler

CODE	SIZE	PACK QTY	PRICE
IP10001	16mm	10	
IP10002	20mm	10	
IP10003	26mm	10	
IP10004	32mm	10	
IP10005	40mm	10	
IP10006	50mm	5	
IP10007	63mm	1	



IP10 Straight Reducer

CODE	SIZE	PACK QTY	PRICE
IP10021	20 x 16mm	10	
IP10031	26 x 16mm	10	
IP10032	26 x 20mm	10	
IP10042	32 x 20mm	10	
IP10043	32 x 26mm	10	
IP10052	40 x 20mm	10	
IP10053	40 x 26mm	10	
IP10054	40 x 32mm	10	
IP10056	50 x 40mm	5	
IP10063	50 x 26mm	5	
IP10064	50 x 32mm	5	
IP10074	63 x 32mm	1	
IP10076	63 x 50mm	1	



IP11 Straight Coupler M.I x PIPE

CODE	SIZE	PACK QTY	PRICE
IP11001	½" M x 16mm	10	
IP11012	½" M x 20mm	10	
IP11013	½" M x 26mm	10	
IP11021	¾" M x 16mm	10	
IP11002	¾" M x 20mm	10	
IP11023	¾" M x 26mm	10	
IP11032	1" M x 20mm	10	
IP11003	1" M x 26mm	10	
IP11034	1" M x 32mm	10	
IP11004	1¼" M x 32mm	10	
IP11045	1¼" M x 40mm	10	
IP11056	1½" M x 50mm	5	
IP11057	1½" M x 63mm	1	
IP11066	2" M x 50mm	1	
IP11067	2" M x 63mm	1	



Note: Fittings should be kept in original packaging to prevent O-ring lubrication drying out before use.

IP12 Straight Coupler F.I x PIPE

CODE	SIZE	PACK QTY	PRICE
IP12001	½" F x 16mm	10	
IP12013	½" F x 26mm	10	
IP12021	¾" F x 16mm	10	
IP12002	¾" F x 20mm	10	
IP12023	¾" F x 26mm	10	
IP12032	1" F x 20mm	10	
IP12003	1" F x 26mm	10	
IP12034	1" F x 32mm	10	
IP12004	1¼" F x 32mm	10	
IP12045	1¼" F x 40mm	10	
IP12056	1½" F x 50mm	5	
IP12057	1½" F x 63mm	1	



IP13 Adaptor

CODE	SIZE	PACK QTY	PRICE
IP13001	½" C x 16mm	10	
IP13002	¾" C x 20mm	10	
IP13021	¾" C x 16mm	10	
IP13023	¾" C x 26mm	10	
IP13033	1" C X 26mm	10	
IP13034	1" C x 32mm	10	
IP13011	15mm C x 16mm	10	
IP13012	22mm C x 20mm	10	
IP13223	22mm C x 26mm	10	
IP13035	28mm C x 32mm	10	



IP13 Elbow Adaptor

CODE	SIZE	PACK QTY	PRICE
IP13101	½" C x 16mm	10	
IP13102	¾" C x 20mm	10	
IP13110	15mm C x 16mm	10	
IP13111	22mm C x 20mm	10	



IP14 Spigot

CODE	SIZE	PACK QTY	PRICE
IP14001	16mm x ½"	10	
IP14011	16mm x 15mm	10	
IP14002	20mm x ¾"	10	
IP14022	20mm x 22mm	10	
IP14003	26mm x ¾"	10	
IP14033	26mm x 22mm	10	
IP14004	26mm x 1"	10	
IP14044	26mm x 28mm	10	
IP14046	32mm x 28mm	10	
IP14047	32mm x 1"	10	



Note: Fittings should be kept in original packaging to prevent O-ring lubrication drying out before use.

IP15 90° Elbow

CODE	SIZE	PACK QTY	PRICE
IP15001	16mm	10	
IP15002	20mm	10	
IP15003	26mm	10	
IP15004	32mm	10	
IP15005	40mm	5	
IP15006	50mm	1	
IP15007	63mm	1	



IP15 45° Elbow

CODE	SIZE	PACK QTY	PRICE
IP15055	40mm	5	
IP15066	50mm	5	



IP15 Radiator Extension Elbow

CODE	SIZE	PACK QTY	PRICE
IP15010	16mm x 300mm	10	
IP15011	16mm x 100mm	10	



IP16 Elbow M.I x PIPE

CODE	SIZE	PACK QTY	PRICE
IP16001	½" M x 16mm	10	
IP16012	½" M x 20mm	10	
IP16002	¾" M x 20mm	10	
IP16023	¾" M x 26mm	10	
IP16032	1" M x 20mm	10	
IP16003	1" M x 26mm	10	
IP16034	1" M x 32mm	10	
IP16004	1¼" M x 32mm	10	



Note: Fittings should be kept in original packaging to prevent O-ring lubrication drying out before use.

IP17 Elbow F.I x PIPE

CODE	SIZE	PACK QTY	PRICE
IP17001	½" F x 16mm	10	
IP17012	½" F x 20mm	10	
IP17013	½" F x 26mm	10	
IP17002	¾" F x 20mm	10	
IP17023	¾" F x 26mm	10	
IP17032	1" F x 20mm	10	
IP17003	1" F x 26mm	10	
IP17034	1" F x 32mm	10	
IP17004	1¼" F x 32mm	10	
IP17001CP	½" F x 16mm Chrome	10	



IP18 Equal Tee

CODE	SIZE	PACK QTY	PRICE
IP18001	16mm	10	
IP18002	20mm	10	
IP18003	26mm	10	
IP18004	32mm	10	
IP18005	40mm	5	
IP18006	50mm	1	
IP18007	63mm	1	



IP18 Reducing Tee

CODE	SIZE	PACK QTY	PRICE
IP18112	16 x 16 x 20mm	10	
IP18211	20 x 16 x 16mm	10	
IP18212	20 x 16 x 20mm	10	
IP18221	20 x 20 x 16mm	10	
IP18223	20 x 20 x 26mm	10	
IP18311	26 x 16 x 16mm	10	
IP18312	26 x 16 x 20mm	10	
IP18313	26 x 16 x 26mm	10	
IP18322	26 x 20 x 20mm	10	
IP18323	26 x 20 x 26mm	10	
IP18331	26 x 26 x 16mm	10	
IP18332	26 x 26 x 20mm	10	
IP18334	26 x 26 x 32mm	10	
IP18414	32 x 16 x 32mm	10	
IP18424	32 x 20 x 32mm	10	
IP18432	32 x 26 x 20mm	10	
IP18433	32 x 26 x 26mm	10	
IP18434	32 x 26 x 32mm	10	
IP18441	32 x 32 x 16mm	10	
IP18442	32 x 32 x 20mm	10	
IP18443	32 x 32 x 26mm	10	
IP18552	40 x 40 x 20mm	5	
IP18553	40 x 40 x 26mm	5	
IP18554	40 x 40 x 32mm	5	
IP18663	50 x 50 x 26mm	1	
IP18664	50 x 50 x 32mm	1	
IP18665	50 x 50 x 40mm	1	
IP18774	63 x 63 x 32mm	1	
IP18775	63 x 63 x 40mm	1	
IP18776	63 x 63 x 50mm	1	



Note: Fittings should be kept in original packaging to prevent O-ring lubrication drying out before use.

IP19 Wallplate Elbow

CODE	SIZE	PACK QTY	PRICE
IP19001	½" F x 16mm	10	
IP19012	½" F x 20mm	10	



IP30 Tee

CODE	SIZE	PACK QTY	PRICE
IP30001	16 x 16 x ½" F	10	
IP30002	20 x 20 x ¾" F	10	
IP30331*	26 x 26 x ½" F	10	
IP30003	26 x 26 x 1" F	10	
IP30443	32 x 32 x 1" F	10	



IP51 Stop End

CODE	SIZE	PACK QTY	PRICE
IP51001	16mm	10	
IP51002	20mm	10	
IP51003	26mm	10	
IP51004	32mm	10	



IP20 Nut & Insert Adaptor to Copper Compression

CODE	SIZE	PACK QTY	PRICE
IP20001	½" x 16mm	10	
IP20002	15mm x 16mm	10	
IP20003	¾" x 20mm	10	
IP20004	1" x 26mm	10	
IP20005	22mm x 20mm	10	
IP20006	28mm x 26mm	10	
IP20001CP	½" x 16mm	10	
IP20002CP	15mm x 16mm	10	

IP20002CP is suitable for use with all 15mm Sanbra Fyffe Standard TRV's and Rad Valves.

Kiwa Reg4 Approved



IP20 Press Adaptor to Copper Compression

CODE	SIZE	PACK QTY	PRICE
IP20060	½" x 16mm	10	
IP20061	15mm x 16mm	10	
IP20062	¾" x 20mm	10	



*Not WRAS Approved

Note: Fittings should be kept in original packaging to prevent O-ring lubrication drying out before use.

IP21 Press Adaptor to Copper Press

CODE	SIZE	PACK QTY	PRICE
IP21001	16mm x 15mm	10	
IP21002	20mm x 22mm	10	
IP21003	26mm x 28mm	10	
IP21004	16mm x ½"	10	
IP21005	20mm x ¾"	10	
IP21006	26mm x 1"	10	



Shower Bracket

CODE	SIZE	PACK QTY	PRICE
IP93001	16mm		



IP27 Tap Connector

CODE	SIZE	PACK QTY	PRICE
IP27001*	16mm x 15mm	10	



IP70 Tap Isolating Valve

CODE	SIZE	PACK QTY	PRICE
IP700051*	16mm x ½"		
IP700049*	16mm x 15mm		



IP80 Lever Ball Valve

CODE	SIZE	PACK QTY	PRICE
IP80001	16mm	10	
IP80002	20mm	5	
IP80003	26mm	5	
IP80004	32mm	5	

Please specify red or blue handles when ordering (use 'R' or 'B' after code above)
Not WRAS Approved



Flexible Hoses

CODE	SIZE	PACK QTY	PRICE
IP700110*	½" X 16mm IP x 300mm		
IP700109*	½" X 16mm IP x 500mm		



Thermostatic Radiator Valves

CODE	SIZE	PACK QTY	PRICE
IP771095*	16mm TRV Only		
IP771096*	16mm TRV Pack		

*Not WRAS Approved

Note: Fittings should be kept in original packaging to prevent O-ring lubrication drying out before use.



Brass Manifolds

CODE	SIZE	PRICE
771871C*	¾" x ½" x 2 Port + IP Adaptor	
771872C*	1" x ½" x 2 Port + IP Adaptor	
771874C*	¾" x ½" x 3 Port + IP Adaptor	
771875C*	1" x ½" x 3 Port + IP Adaptor	
771877C*	¾" x ½" x 4 Port + IP Adaptor	
771878C*	1" x ½" x 4 Port + IP Adaptor	



IP Brass Manifolds with Fixed Adaptors

CODE	SIZE	PRICE
IP771871*	¾" x 16mm 2 Port Manifold	
IP771874*	¾" x 16mm 3 Port Manifold	
IP771877*	¾" x 16mm 4 Port Manifold	
IP771872*	1" x 16mm 2 Port Manifold	
IP771875*	1" x 16mm 3 Port Manifold	
IP771878*	1" x 16mm 4 Port Manifold	



IP WRAS Approved Brass Manifold

CODE	SIZE	PRICE
771871PWK	¾" x 16mm 2 Port Manifold	
771874PWK	¾" x 16mm 3 Port Manifold	
771877PWK	¾" x 16mm 4 Port Manifold	
771872PWK	1" x 16mm 2 Port Manifold	
771875PWK	1" x 16mm 3 Port Manifold	
771878PWK	1" x 16mm 4 Port Manifold	



IP WRAS Approved Brass Manifold

CODE	SIZE	PRICE
771897PWK	1" x ¾" x 4 Port Manifold	
771896PWK	1" x ¾" x 3 Port Manifold	
771899PWK	1" x ¾" x 2 Port Manifold	



IP Brass Manifolds - with ISO Valves

CODE	SIZE	PRICE
IP771892*	¾" x 16mm 2 Port Manifold with ISO Valve	
IP771894*	¾" x 16mm 3 Port Manifold with ISO Valve	
IP771895*	¾" x 16mm 4 Port Manifold with ISO Valve	
IP771893*	1" x 16mm 2 Port Manifold with ISO Valve	



IP Manifold Blank

CODE	SIZE	PRICE
IP51011*	½"	



*Not WRAS Approved

Note: Fittings should be kept in original packaging to prevent O-ring lubrication drying out before use.



Instantor[®]

Pex-Al-Pex Pipe



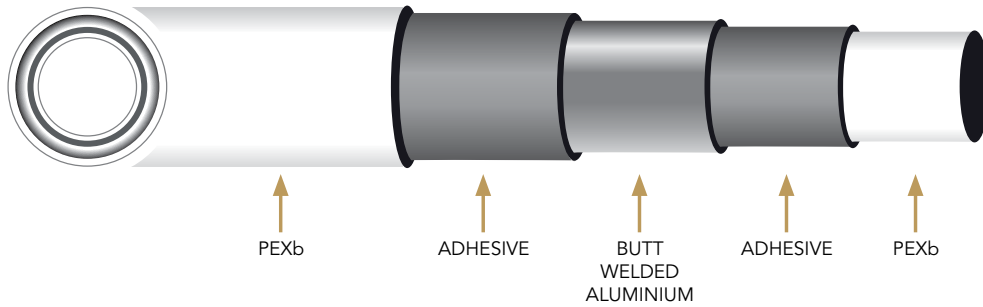
FEATURES

- **FLEXIBLE PIPE** - Lightweight pipe that maintains its memory when bent
- **BUTT WELDED** - Providing a solid & resilient finish which is 100% oxygen & water vapour tight.
- **DURABLE** - Withstands high temperatures up to 95°C
- **VERSATILE** - Suitable for use in underfloor heating, potable water & most general plumbing applications.
- **DIVERSE RANGE** - Available from 16mm-63mm in plain and insulated options.



Instantor[®]

Pex-Al-Pex Pipe



PE-xB/Al/PE-xB Multilayer Pipe

Instantor Pex-Al-Pex Pipe Lengths

CODE	SIZE	PACK QTY	PRICE
IPAP111	16mm x 4M	50	
IPAP112	20mm x 4M	35	
IPAP113	26mm x 4M	20	
IPAP114	32mm x 4M	12	
IPAP115	40mm x 4M	6	
IPAP116	50mm x 4M	5	
IPAP117	63mm x 4M	5	



Instantor Pex-Al-Pex Pipe Coils

CODE	SIZE	PALLET QTY	PRICE
IPAP101	16mm x 100M	10	
IPAP102	20mm x 100M	10	
IPAP103	26mm x 50M	10	
IPAP104	32mm x 50M	10	
IPAP105	16mm x 500M	5	
IPAP106	16mm x 120M	5	
IPAP107	16mm x 200M	5	



Note: Fittings should be kept in original packaging to prevent O-ring lubrication drying out before use.

INSTANTOR PE-xB/Al/PE-xB Pipe

Technical Specifications

UNIT OF MEASUREMENT		IPAP101 IPAP111	IPAP102 IPAP112	IPAP103 IPAP113	IPAP104 IPAP114	IPAP105 -	IPAP107 -	- IPAP115	- IPAP116	- IPAP117	
Outer Diameter	mm	16	20	26	32	16	16	40	50	63	
Inner Diameter	mm	12	16	20	26	12	12	32	41	51	
Weight	kg/M	0.110	0.147	0.268	0.355	0.110	0.110	0.557	0.797	1.269	
Thickness of Aluminium	mm	0.25	0.3	0.35	0.5	0.25	0.25	0.5	0.5	0.6	
Total Thickness	mm	2	2	3	3	2	2	4	4.5	6	
Coils Length	M	100	100	50	50	500	200	-	-	-	
Straight Lengths	M	4	4	4	4	-	-	4	4	4	
Volume of water	l/m	0.113	0.201	0.314	0.531	0.113	0.113	0.803	1.319	2.014	
Internal roughness	µm						7				
Thermal conductivity at Delta T 40°C	W/mk						0.43				
Coefficient of expansion	mm/m°C						0.025				
Degree of crosslinking	°C						≥65°C				
Oxygen permeability	mg/l						0				
Colour							White				
Type							PE-xB/Al/PE-xB multilayer pipe				
Field of application							Plumbing in civil, industrial and commercial applications				
Fluid							Potable water, technical water, and water glycol(*)				
Max peak temperature	°C						110				
Minimum operating temperature(*)	°C						0				
Maximum operating pressure at 95°C	bar						6				
Maximum operating pressure at 20°C	bar						10				
Duration at 95°C and 6 bar							Time duration to be determined by service conditions				
Storage							Avoid prolonged exposure to direct sunlight				
Minimum bend radius							5 times the diameter				

(*) In the case of water glycol, in order to define the minimum operating temperature, it is necessary to know the elements of the mixture and the various concentrations.

Application Class Table (ISO 21003-1)

APPLICATION CLASS	DESIGN TEMPERATURE T _D °C	TIME ^b AT T _D YEARS	T _{max} °C	TIME AT T _{max} YEARS	T _{mal} °C	TIME AT T _{mal} ^h	TYPICAL FIELD OF APPLICATION
1 ^a	60	49	80	1	95	100	Hot water supply (60°C)
2 ^a	70	49	80	1	95	100	Hot water supply (70°C)
4 ^b	20 + Cumulative	2.5	70	2.5	100	100	Underfloor heating and low-temperature radiators
	40 + Cumulative	20					
	60	25					
5 ^b	20 + Cumulative	14	90	1	100	100	High-temperature radiators
	60 + Cumulative	25					
	80	10					

^a A country may select either class 1 or class 2 in conformity with its nation regulations.

^b Where more than one design temperature for time and associated temperature appears for any class, they should be aggregated.

"Plus cumulative" in the table implies a temperature profile of the mentioned temperature over time (e.g. the design temperature profile for 50 years for class 5 is 20°C for 14 years followed by 60°C for 25 years, 80°C for 10 years, 90°C for 1 year and 100°C for 100h).

NOTE: For values of T_D, T_{max} and T_{mal} in excess of those in the table, this International Standard does not apply. In the case of water glycol, in order to define the minimum operating temperature, it is necessary to know the elements of the mixture and the various concentrations.

Note: Fittings should be kept in original packaging to prevent O-ring lubrication drying out before use.



PE-xB/Al/PE-xB Multilayer Insulated Pipe

Instantor Pex-Al-Pex Pipe Insulated Coils

SIZE	WHITE		RED		BLUE		PALLET QTY
	CODE	PRICE	CODE	PRICE	CODE	PRICE	
16mm x 100M	IPAP201		IPAP301		IPAP401		10
20mm x 50M	IPAP202		IPAP302		IPAP402		10
26mm x 25M	IPAP203		IPAP303		IPAP403		10
32mm x 25M	IPAP204		IPAP304		IPAP404		10
26mm x 50M	IPAP205		-	-	-	-	-

Instantor Pex-Al-Pex Pipe - Increased Insulation

CODE	SIZE	PRICE	INSULATION THICKNESS	LINEAR HEAT LOSS	MAX PERMISSIBLE HEAT LOSS
IPAP501	16mm x 50M		9mm	7.008 W/m	7.89 W/m
IPAP502	20mm x 50M		13mm	7.436 W/m	9.12 W/m
IPAP503	26mm x 25M		13mm	9.491 W/m	10.07 W/m
IPAP504	32mm x 25M		13mm	10.974W/m	11.08 W/m

IPAP5 RANGE IS PART L DOMESTIC TABLE 20 COMPLIANT

Linear Heat Loss Calculated as per ISO12241 via BS5422. Water temperature 60°, with still air temperature 15°

Instantor Pex-Al-Pex Pipe - Increased Insulation - BL Fire Rated

CODE	SIZE	PRICE	INSULATION THICKNESS	LINEAR HEAT LOSS	MAX PERMISSIBLE HEAT LOSS
IPAP601	16mm x 100M		9mm	7.309 W/m	7.89 W/m
IPAP602	20mm x 50M		13mm	7.821 W/m	9.12 W/m
IPAP603	26mm x 25M		13mm	9.674 W/m	10.07 W/m

IPAP6 RANGE IS PART L DOMESTIC TABLE 20 COMPLIANT

Linear Heat Loss Calculated as per ISO12241 via BS5422. Water temperature 60°, with still air temperature 15°

INSTANTOR PE-xB/Al/PE-xB Pipe

Technical Specifications

UNIT OF MEASUREMENT		IPAP201	IPAP202	IPAP203	IPAP204	IPAP205	IPAP501	IPAP502	IPAP503	IPAP601	IPAP602	IPAP603	
		IPAP301 IPAP401	IPAP302 IPAP402	IPAP303 IPAP403	IPAP304 IPAP404								
Outer diameter	mm	16	20	26	32	26	16	20	26	16	20	26	
Insulation Thickness (round)	mm	6	6	6	6	6	9	13	13	9	13	13	
Diameter pipe + sheath (heating)	mm	28	32	38	44	38	34	46	50	34	46	52	
Aluminium thickness	mm	0.25	0.3	0.35	0.5	0.35	0.25	0.30	0.35	0.25	0.30	0.35	
Roll length	M	100	50	25	25	50	50	50	25	50	50	25	
Volume of water	l/m	0.113	0.201	0.314	0.531	0.314	0.113	0.201	0.314	0.113	0.201	0.314	
Thermal conductivity at 20°C	W/mk							0.04					
Internal roughness	µm							7					
Coefficient of expansion	kg/m ³							35 to 45					
Degree of crosslinking	%							≥65%					
Oxygen permeability	mg/l							0					
Colour								White / Red / Blue					
Pipe material								PE-xB/Al/PE-xB multilayer pipe					
Sheath material								closed-cell polyethylene foam PE-LD					
Scratch-resistant finish layer								closed-cell polyethylene foam PE-LD					
Field of application								Plumbing in civil, industrial and commercial applications					
Fluid								Potable water, technical water, and water glycol(*)					
Max peak temperature	°C							110					
Minimum operating temperature(**)	°C							0					
Maximum operating pressure at 95°C	bar							6					
Maximum operating pressure at 20°C	bar							10					
Duration at 95°C and 6 bar								Time duration to be determined by service conditions					
Storage								Avoid prolonged exposure to direct sunlight					
Minimum bend radius(**)								5 times the diameter					
Fire Classification								B2 (DIN 4102) / EL (EN 13501-1:2007 A1:2009)			BL-S1-D0 (EN13501)		

(*)Reference is made to a sheathed pipe and the use of a suitable water glycol mix.

(**)Take the thickness of the sheath into account when bending a pipe with a bender.

e.g. Ø16 sheath: total thickness=28mm,use bender with Ø26 profile.

See page 17 for Application Class Table (ISO 21003-1)

ACCESSORIES

IP20 Bending Spring Pack (Internal & External)

CODE	SIZE	BOX QTY	PRICE
IP20030	16mm	10	
IP20031	20mm	10	
IP20032	26mm	10	
IP20033	32mm	5	



Pipe Decoiler

CODE	SIZE	BOX QTY	PRICE
IP20017	Suits All Sizes	-	



Push Fit Press Test Fitting

CODE	SIZE	PRICE
IP20071*	16mm Incl Tool	
IP20072*	20mm Incl. Tool	
IP20075*	16mm Removal Tool	
IP20076*	20mm Removal Tool	



Pressure Test Gauge

CODE	SIZE	PRICE
IP20077*	Gauge For Pressure Test Fittings	



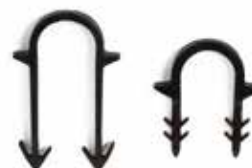
Adhesive Tracking Strip

CODE	SIZE	PRICE
IP20019	16mm x 1M	



Pipe Staple

CODE	SIZE	PACK QTY	PRICE
IP20014	16mm x 40mm	30	
IP20012	16mm x 60mm	30	



Manifold Bracket

CODE	SIZE	PACK QTY	PRICE
771910	¾"	20	
771911	1"	18	



*Not WRAS Approved

Note: Fittings should be kept in original packaging to prevent O-ring lubrication drying out before use.



Instantor[®]

Copper Press Fittings

INSTANTOR
COPPER PRESS

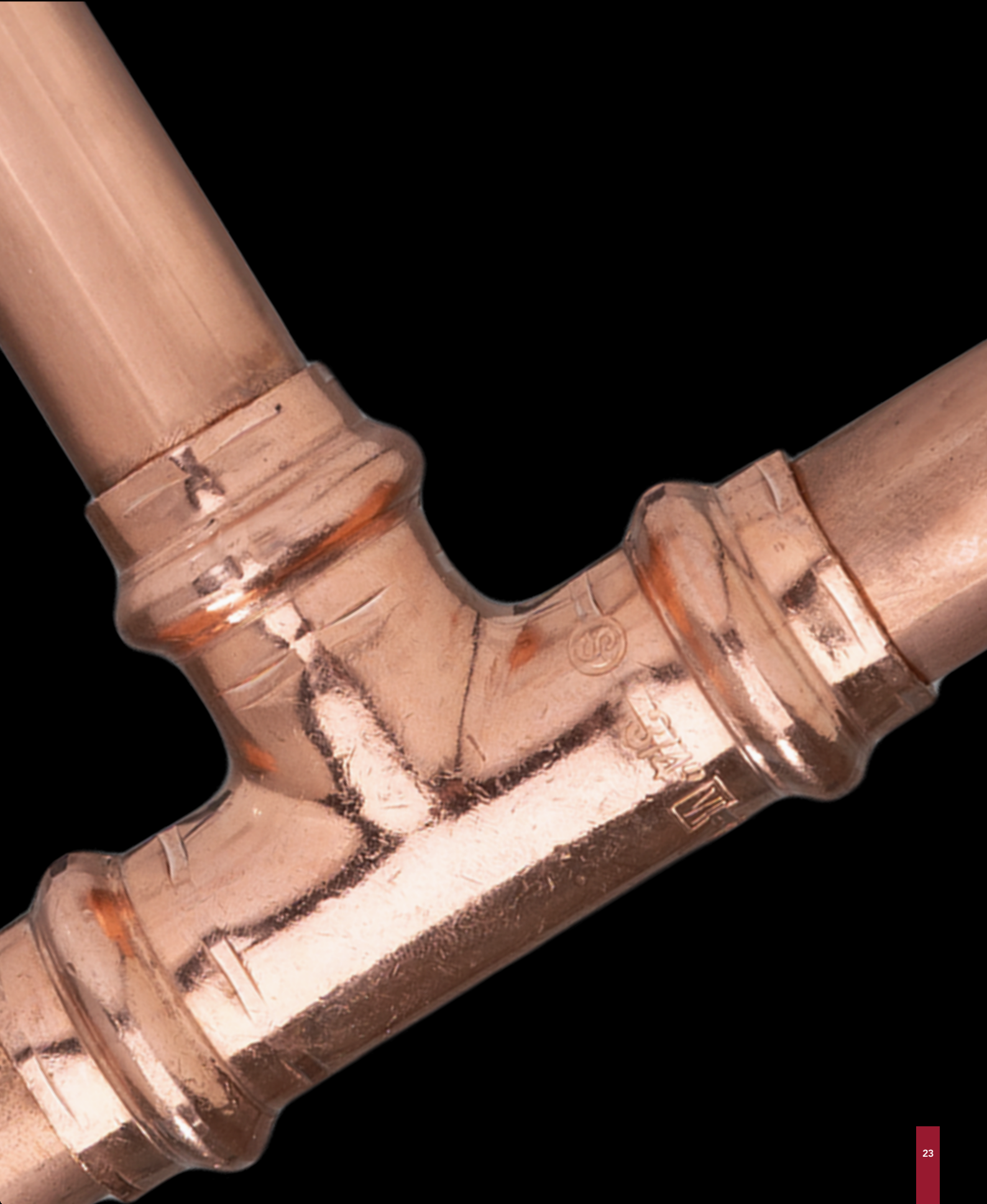


Instantor Copper Press fittings are available for water and gas applications. A cutting-edge range offering a quality assured solution with flame free jointing for a quicker and safer installation.

Instantor Copper Press has been rigorously evaluated and certified by WRAS & KIWA to reaffirm our dedication to delivering products that consistently meet the highest standard of quality, safety and performance.

The GAS range of fittings are GASTEC QA approved and feature yellow HNBR O-Rings which are also approved to the relevant industry standards. No hot works permit is required and copper press fittings are quicker and more cost-effective to install than traditional plumbing methods.







WATER



Instantor[®]

Copper Press Fittings

FEATURES

- **CERTIFIED** - WRAS & KIWA approval on fittings
- **SAFER INSTALLATIONS** - Flame free jointing with no requirement for hotworks permit
- **QUICK TO INSTALL** - Installation complete in just 5 steps. Cut, Calibrate, Check, Mark & Press
- **SAVE ON TIME** - 35% faster install than traditional soldering method
- **EXTENSIVE OFFERING** - Available in Imperial & Metric sizing
- **LEAK DETECTION** - EPDM O-Rings designed with feature to identify un-pressed joints during system testing

INSTALLATION INSTRUCTIONS



CUT

1. Ensure that the fitting is the correct size for the tube being used. Cut the pipe to length using a good quality pipe cutter or rotary pipe cutter. It is important that pipe ends are clean, cut square, and the pipe is not deformed. High speed grinding wheels are not suitable.



CALIBRATE

2. All burrs and sharp edges should be removed. Using a de-burring tool to both the inside and outside of the pipe, leaving an external chamfer. Wipe the pipe end clean. The pipe ends should be free from scratches or scores for a distance not less than the socket depth. **NOTE:** A poorly calibrated pipe could damage the O-ring on insertion.



CHECK

3. Before inserting the pipe, check the O-ring is seated, lubricated and free from damage. (Re-moisten O-ring with water if necessary).



MARK

4. Insert the pipe fully into the socket of the fitting until it hits the pipe stop (or until pipes meet in the middle in fittings without a pipe stop). Mark the insertion depth with black marker to ensure the pipe has been fully inserted before pressing.



PRESS

5. Making sure to select the correct profile Jaw, VI or M for copper press, execute the press cycle. After the press tool cycle is complete remove the Press Jaws and check that the socket depth marking on the pipe has remained in place, adjacent to the mouth of the fitting.

NOTE: Fittings should be kept in original packaging to protect the O-ring and prevent drying out of lubrication.

NB: Copper Press water fittings are only suitable for water applications and O rings are not interchangeable with other Instantor Copper Press Products. Only water Copper Press product (indicated with black O-Rings) should be used on water installations and under no circumstances should 'O-rings' be changed or altered.

TECHNICAL SUMMARY

- **Operating Pressure & Temperatures:**
 - 16bar @ 30°C
 - 10bar @ 95°C
- **Max Operating Temperature:** 110°C
- **Min Operating Temperature:** -25°C

Further technical information available, see page 32

SPACING BETWEEN FITTINGS

Minimum spacing between fittings is recommended as follows:

15mm / 1/2" - 10mm space
22mm / 3/4" - 20mm space
28mm / 1" - 20mm space

PIPE SUPPORT

Pipe supports should be used to prevent movement and vibration in the finished system.

Maximum bracket distance for copper tube:

15mm	1.8m Vertical	1.2m Horizontal
22mm	2.4m Vertical	1.8m Horizontal
28mm	2.4m Vertical	1.8m Horizontal

WARNING

Due care should be taken to prevent damage to copper press fittings and O-rings by heat transfer due to nearby brazing. High temperature can anneal copper pipe making it too soft for press fit along with causing excessive heat damage to the EPDM O-rings. Each fitting and O-ring should be inspected before installation to confirm that there is no damage or defects due to storage or transportation. Do not use fitting if any visual defects are noted.

IMPERIAL

CP310 Straight Coupler

CODE	SIZE	PACK QTY	PRICE
CP310001	1/2"	10	
CP310002	3/4"	10	
CP310003	1"	10	



CP310 Straight Reducer

CODE	SIZE	PACK QTY	PRICE
CP310021	3/4" x 1/2"	10	
CP310031	1" x 1/2"	10	
CP310032	1" x 3/4"	10	



CP310 Slip Coupler

CODE	SIZE	PACK QTY	PRICE
CP3100S1	1/2"	10	
CP3100S2	3/4"	10	
CP3100S3	1"	10	



CP311 Straight Coupler M.I x Press

CODE	SIZE	PACK QTY	PRICE
CP311001	1/2" M x 1/2" Press	10	
CP311002	3/4" M x 3/4" Press	10	
CP311003	1" M x 1" Press	10	



CP312 Straight Coupler F.I x Press

CODE	SIZE	PACK QTY	PRICE
CP312001	1/2" F x 1/2" Press	10	
CP312002	3/4" F x 3/4" Press	10	
CP312003	1" F x 1" Press	10	



CP313 Bent Swivel Connector

CODE	SIZE	PACK QTY	PRICE
CP313001*	1/2" x 1/2"	10	
CP313002*	3/4" x 3/4"	10	



*Not WRAS Approved

Note: Fittings should be kept in original packaging to prevent O-ring lubrication drying out before use.

CP314 Straight Swivel Connector

CODE	SIZE	PACK QTY	PRICE
CP314001*	1/2" x 1/2"	10	
CP314002*	3/4" x 3/4"	10	



CP315 Elbow

CODE	SIZE	PACK QTY	PRICE
CP315001	1/2"	10	
CP315002	3/4"	10	
CP315003	1"	10	
CP315021	3/4" x 1/2"	10	
CP315031	1" x 1/2"	10	
CP315032	1" x 3/4"	10	



CP317W Wallplate Elbow

CODE	SIZE	PACK QTY	PRICE
CP319001*	1/2"	10	
CP319002*	3/4"	10	



CP318 Equal Tee

CODE	SIZE	PACK QTY	PRICE
CP318001	1/2"	10	
CP318002	3/4"	10	
CP318003	1"	10	



CP318 Reducing Tee

CODE	SIZE	PACK QTY	PRICE
CP318112	1/2" x 1/2" x 3/4"	10	
CP318211	3/4" x 1/2" x 1/2"	10	
CP318212	3/4" x 1/2" x 3/4"	10	
CP318221	3/4" x 3/4" x 1/2"	10	
CP318223	3/4" x 3/4" x 1"	10	
CP318311	1" x 1/2" x 1/2"	5	
CP318312	1" x 1/2" x 3/4"	5	
CP318313	1" x 1/2" x 1"	5	
CP318321	1" x 3/4" x 1/2"	5	
CP318322	1" x 3/4" x 3/4"	5	
CP318323	1" x 3/4" x 1"	5	
CP318331	1" x 1" x 1/2"	5	
CP318332	1" x 1" x 3/4"	5	



*Not WRAS Approved

Note: Fittings should be kept in original packaging to prevent O-ring lubrication drying out before use.

CP319 Fitting Reducer

CODE	SIZE	PACK QTY	PRICE
CP319021	3/4" x 1/2"	10	
CP319031	1" x 1/2"	10	
CP319032	1" x 3/4"	10	



CP325 Obtuse Street Elbow

CODE	SIZE	PACK QTY	PRICE
CP325001	1/2"	10	
CP325002	3/4"	10	
CP325003	1"	10	



CP335 Street Elbow

CODE	SIZE	PACK QTY	PRICE
CP335001	1/2"	10	
CP335002	3/4"	10	
CP335003	1"	10	



CP345 Obtuse Bend

CODE	SIZE	PACK QTY	PRICE
CP345001	1/2"	10	
CP345002	3/4"	10	
CP345003	1"	10	



CP351 Stop End

CODE	SIZE	PACK QTY	PRICE
CP351001	1/2"	10	
CP351002	3/4"	10	
CP351003	1"	10	



CP368 633 M.T Cock

CODE	SIZE	PACK QTY	PRICE
CP368001*	1/2" Press	10	



IP21 Press Adaptor to Copper Press

CODE	SIZE	PACK QTY	PRICE
IP21004	16mm x 1/2"	10	
IP21005	20mm x 3/4"	10	
IP21006	26mm x 1"	10	



*Not WRAS Approved

Note: Fittings should be kept in original packaging to prevent O-ring lubrication drying out before use.

METRIC

CP410 Straight Coupler

CODE	SIZE	PACK QTY	PRICE
CP410001	15mm	10	
CP410002	22mm	10	
CP410003	28mm	10	
CP410004	35mm	L	
CP410005	42mm	L	
CP410006	54mm	L	



CP410 Straight Reducer

CODE	SIZE	PACK QTY	PRICE
CP410021	22mm x 15mm	10	
CP410031	28mm x 15mm	10	
CP410032	28mm x 22mm	10	



CP410 Slip Coupler

CODE	SIZE	PACK QTY	PRICE
CP4100S1	15mm	10	
CP4100S2	22mm	10	
CP4100S3	28mm	10	



CP411 Straight Coupler M.I x Press

CODE	SIZE	PACK QTY	PRICE
CP411001	½" M x 15mm Press	10	
CP411002	¾" M x 22mm Press	10	
CP411003	1" M x 28mm Press	10	



CP412 Straight Coupler F.I x Press

CODE	SIZE	PACK QTY	PRICE
CP412001	½" F x 15mm Press	10	
CP412002	¾" F x 22mm Press	10	
CP412003	1" F x 28mm Press	10	



CP413 Bent Swivel Connector

CODE	SIZE	PACK QTY	PRICE
CP413001*	15mm x ½"	10	
CP413002*	22mm x ¾"	10	



*Not WRAS Approved

Note: Fittings should be kept in original packaging to prevent O-ring lubrication drying out before use.

CP414 Straight Swivel Connector

CODE	SIZE	PACK QTY	PRICE
CP414001*	15mm x 1/2"	10	
CP414002*	22mm x 3/4"	10	



CP415 Elbow

CODE	SIZE	PACK QTY	PRICE
CP415001	15mm	10	
CP415002	22mm	10	
CP415003	28mm	5	
CP415004	35mm	L	
CP415005	42mm	L	
CP415006	54mm	L	
CP415021	22mm x 15mm	10	
CP415031	28mm x 15mm	5	
CP415032	28mm x 22mm	5	



CP418 Equal Tee

CODE	SIZE	PACK QTY	PRICE
CP418001	15mm	10	
CP418002	22mm	10	
CP418003	28mm	4	
CP418004	35mm	L	
CP418005	42mm	L	
CP418006	54mm	L	



CP418 Reducing Tee

CODE	SIZE	PACK QTY	PRICE
CP418112	15mm x 15mm x 22mm	10	
CP418211	22mm x 15mm x 15mm	10	
CP418212	22mm x 15mm x 22mm	10	
CP418221	22mm x 22mm x 15mm	10	
CP418223	22mm x 22mm x 28mm	5	
CP418311	28mm x 15mm x 15mm	5	
CP418312	28mm x 15mm x 22mm	5	
CP418313	28mm x 15mm x 28mm	5	
CP418321	28mm x 22mm x 15mm	5	
CP418322	28mm x 22mm x 22mm	5	
CP418323	28mm x 22mm x 28mm	5	
CP418331	28mm x 28mm x 15mm	5	
CP418332	28mm x 28mm x 22mm	5	



CP468 633 M.T Cock

CODE	SIZE	PACK QTY	PRICE
CP468001*	15mm Press	10	



*Not WRAS Approved

Note: Fittings should be kept in original packaging to prevent O-ring lubrication drying out before use.

CP419 Fitting Reducer

CODE	SIZE	PACK QTY	PRICE
CP419021	22mm x 15mm	10	
CP419031	28mm x 15mm	10	
CP419032	28mm x 22mm	10	
CP419043	35mm x 28mm	L	
CP419054	42mm x 35mm	L	
CP419065	54mm x 42mm	L	



CP425 Obtuse Street Elbow

CODE	SIZE	PACK QTY	PRICE
CP425001	15mm	10	
CP425002	22mm	10	
CP425003	28mm	10	



CP435 Street Elbow

CODE	SIZE	PACK QTY	PRICE
CP435001	15mm	10	
CP435002	22mm	10	
CP435003	28mm	10	



CP445 Obtuse Bend

CODE	SIZE	PACK QTY	PRICE
CP445001	15mm	10	
CP445002	22mm	10	
CP445003	28mm	10	



CP451 Stop End

CODE	SIZE	PACK QTY	PRICE
CP451001	15mm	10	
CP451002	22mm	10	
CP451003	28mm	10	
CP451004	35mm	10	
CP451005	42mm	10	
CP451006	54mm	10	



IP21 Press Adaptor to Copper Press

CODE	SIZE	PACK QTY	PRICE
IP21001*	16mm x 15mm	10	
IP21002*	20mm x 22mm	10	
IP21003*	26mm x 28mm	10	



*Not WRAS Approved

Note: Fittings should be kept in original packaging to prevent O-ring lubrication drying out before use.



Instantor[®]

Copper Press Fittings

TECHNICAL INFORMATION

PRESSING PROFILE:

VI Profile - Sizes: ½", ¾" & 1"

M Profile - Sizes: 15mm, 22mm, 28mm, 35mm, 42mm & 54mm

APPLICATION:

Fittings with black EPDM O-Rings are designed for use in hot and cold water services, heating systems*, chilled water.

Instantor Copper press fittings are designed to be used with hard or half hard copper pipe conforming to EN 1057.

*Excluding solar heating applications, solid fuel primary pipelines and directly buried/embedded applications.

SYSTEM TESTING:

Pressure testing on Instantor Copper Press fittings should normally be carried out using clean potable water in accordance with EN806.

All fitting joints installed in the system must remain completely visible and accessible until the system has been successfully leak and pressure tested.

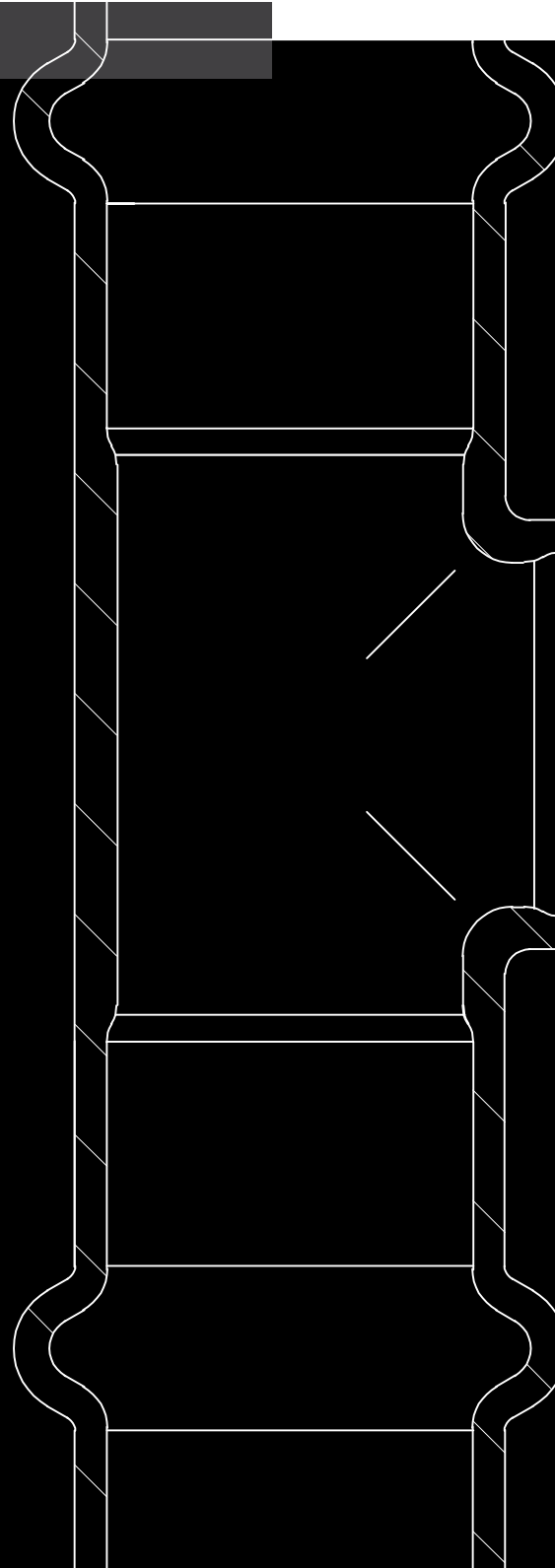
After flushing, fill the system with clean potable water ensuring all trapped air has been expelled. Apply pressure between 1 and 2 bar and perform inspection for un-pressed fittings. If un-pressed fittings are identified, they may be pressed without draining the system. Do not press fittings more than once. When satisfied, no un-pressed fittings remain, increase pressure slowly to the system test pressure. Testing of the system should be carried out in accordance with EN806 to 1.1 times the working pressure (Maximum Design Pressure) of the system.

Full test pressure should hold for a minimum of 30 minutes without any sign of drop in pressure. Final visual inspection should then be carried out to confirm system is leak tight.

GUARANTEE:

Copper is known for its durability, corrosion resistance, thermal conductivity, and hygienic qualities. In some cases, (e.g. chilled water lines) external protection may be required to protect against corrosive conditions.

Instantor Copper Press fittings are guaranteed for 25 years provided they have been installed following correct procedure within operating conditions for which they are designed, by a fully qualified plumber using the correct pressing equipment which holds a valid calibration certificate.



CERTIFICATION:



Imperial Instantor Copper Press
WRAS Approval Number: 2003301 & 2205310
Metric Instantor Copper Press
WRAS Approval Number: 1903373



Imperial Instantor Copper Press
KIWA Certificate Number: 2002711





NEW

GAS



Instantor®

Copper Press Fittings

FEATURES

- **CERTIFIED** - KIWA GASTEC approval on fittings
- **SAFER INSTALLATIONS** - Flame free jointing with no requirement for hotworks permit
- **QUICK TO INSTALL** - Installation complete in just 5 steps. Cut, Calibrate, Check, Mark & Press
- **SAVE ON TIME** - 35% faster install than traditional soldering method
- **EXTENSIVE OFFERING** - Available in Imperial & Metric sizing
- **AESTHETIC FINISH** - Neater & cleaner finish with no risk of heat or scorch marks!

INSTALLATION INSTRUCTIONS



CUT

1. Ensure that the fitting is the correct size for the tube being used. Cut the pipe to length using a good quality pipe cutter or rotary pipe cutter. It is important that pipe ends are clean, cut square, and the pipe is not deformed. High speed grinding wheels are not suitable.



CALIBRATE

2. All burrs and sharp edges should be removed. Using a de-burring tool to both the inside and outside of the pipe, leaving an external chamfer. Wipe the pipe end clean. The pipe ends should be free from scratches or scores for a distance not less than the socket depth. **NOTE:** A poorly calibrated pipe could damage the O-ring on insertion.



CHECK

3. Before inserting the pipe, check the O-ring is seated, lubricated and free from damage. (Re-moisten O-ring with water if necessary**).



MARK

4. Insert the pipe fully into the socket of the fitting until it hits the pipe stop (or until pipes meet in the middle in fittings without a pipe stop). Mark the insertion depth with black marker to ensure the pipe has been fully inserted before pressing.



PRESS

5. Making sure to select the correct profile Jaw ('VI' for Imperial/Irish Instantor Copper Press), execute the press cycle. After the press tool cycle is complete remove the Press Jaws and check that the socket depth marking on the pipe has remained in place, adjacent to the mouth of the fitting.

NOTE: Fittings should be kept in original packaging to protect the O-ring and prevent drying out of lubrication.

NB: Copper Press gas fittings are only suitable for gas applications and O rings are not interchangeable with other Instantor Copper Press Products. Only gas Copper Press product (indicated with yellow O-Rings) should be used on gas installations and under no circumstances should 'O-rings' be changed or altered.

TECHNICAL SUMMARY

- **Operating Pressure & Temperatures:**
Under GASTEC QA 186 approval
200mbar domestic gaseous fuel
-20°C to +70°C

General -20°C to +70°C. MOP 5 Bar - External above ground and MOP 1 Bar - within building subject to fire regulations

Further technical information available, see page 40

SPACING BETWEEN FITTINGS

Minimum spacing between fittings is recommended as follows:

15mm / ½" - 10mm space
22mm / ¾" - 20mm space
28mm / 1" - 20mm space

PIPE SUPPORT

Pipe supports should be used to prevent movement and vibration in the finished system.

Maximum bracket distance for copper tube:

15mm	1.8m Vertical	1.2m Horizontal
22mm	2.4m Vertical	1.8m Horizontal
28mm	2.4m Vertical	1.8m Horizontal

WARNING

Due care should be taken to prevent damage to copper press fittings and O-rings by heat transfer due to nearby brazing. High temperature can anneal copper pipe making it too soft for press fit along with causing excessive heat damage to the HNBR O-rings. Each fitting and O-ring should be inspected before installation to confirm that there is no damage or defects due to storage or transportation. Do not use fitting if any visual defects are noted.

IMPERIAL

CPG310 Gas Straight Coupler

CODE	SIZE	PACK QTY	PRICE
CPG310001	1/2"	10	
CPG310002	3/4"	10	
CPG310003	1"	10	



CPG310 Gas Straight Reducer

CODE	SIZE	PACK QTY	PRICE
CPG310021	3/4" x 1/2"	10	
CPG310031	1" x 1/2"	10	
CPG310032	1" x 3/4"	10	



CPG310 Gas Slip Coupler

CODE	SIZE	PACK QTY	PRICE
CPG3100S1	1/2"	10	
CPG3100S2	3/4"	10	
CPG3100S3	1"	10	



CPG311 Gas Straight Coupler M.I x Press

CODE	SIZE	PACK QTY	PRICE
CPG311001	1/2" M x 1/2" Press	10	
CPG311002	3/4" M x 3/4" Press	10	
CPG311003	1" M x 1" Press	10	



CPG312 Gas Straight Coupler F.I x Press

CODE	SIZE	PACK QTY	PRICE
CPG312001	1/2" F x 1/2" Press	10	
CPG312002	3/4" F x 3/4" Press	10	
CPG312003	1" F x 1" Press	10	



CPG315 Gas Elbow

CODE	SIZE	PACK QTY	PRICE
CPG315001	1/2"	10	
CPG315002	3/4"	10	
CPG315003	1"	10	
CPG315021	3/4" x 1/2"	10	
CPG315031	1" x 1/2"	10	
CPG315032	1" x 3/4"	10	



Note: Fittings should be kept in original packaging to prevent O-ring lubrication drying out before use.

CPG318 Gas Equal Tee

CODE	SIZE	PACK QTY	PRICE
CPG318001	1/2"	10	
CPG318002	3/4"	10	
CPG318003	1"	10	



CPG318 Gas Reducing Tee

CODE	SIZE	PACK QTY	PRICE
CPG318211	3/4" x 1/2" x 1/2"	10	
CPG318212	3/4" x 1/2" x 3/4"	10	
CPG318221	3/4" x 3/4" x 1/2"	10	
CPG318313	1" x 1/2" x 1"	5	
CPG318323	1" x 3/4" x 1"	5	
CPG318332	1" x 1" x 3/4"	5	



CPG319 Gas Fitting Reducer

CODE	SIZE	PACK QTY	PRICE
CPG319021	3/4" x 1/2"	10	
CPG319031	1" x 1/2"	10	
CPG319032	1" x 3/4"	10	



CPG325 Gas Obtuse Street Elbow

CODE	SIZE	PACK QTY	PRICE
CPG325001	1/2"	10	
CPG325002	3/4"	10	
CPG325003	1"	10	



CPG335 Gas Street Elbow

CODE	SIZE	PACK QTY	PRICE
CPG335001	1/2"	10	
CPG335002	3/4"	10	
CPG335003	1"	10	



CPG345 Gas Obtuse Bend

CODE	SIZE	PACK QTY	PRICE
CPG345001	1/2"	10	
CPG345002	3/4"	10	
CPG345003	1"	10	



CPG351 Gas Stop End

CODE	SIZE	PACK QTY	PRICE
CPG351001	1/2"	10	
CPG351002	3/4"	10	
CPG351003	1"	10	



Note: Fittings should be kept in original packaging to prevent O-ring lubrication drying out before use.

METRIC

CPG410 Gas Straight Coupler

CODE	SIZE	PACK QTY	PRICE
CPG410001	15mm	10	
CPG410002	22mm	10	
CPG410003	28mm	10	



CPG410 Gas Straight Reducer

CODE	SIZE	PACK QTY	PRICE
CPG410021	22mm x 15mm	10	
CPG410031	28mm x 15mm	10	
CPG410032	28mm x 22mm	10	



CPG410 Gas Slip Coupler

CODE	SIZE	PACK QTY	PRICE
CPG4100S1	15mm	10	
CPG4100S2	22mm	10	
CPG4100S3	28mm	10	



CPG411 Gas Straight Coupler M.I x Press

CODE	SIZE	PACK QTY	PRICE
CP4G11001	½" M x 15mm Press	10	
CPG411002	¾" M x 22mm Press	10	
CPG411003	1" M x 28mm Press	10	



CPG412 Gas Straight Coupler F.I x Press

CODE	SIZE	PACK QTY	PRICE
CPG412001	½" F x 15mm Press	10	
CPG412002	¾" F x 22mm Press	10	
CPG412003	1" F x 28mm Press	10	



CPG415 Gas Elbow

CODE	SIZE	PACK QTY	PRICE
CPG415001	15mm	10	
CPG415002	22mm	10	
CPG415003	28mm	5	
CPG415021	22mm x 15mm	10	
CPG415031	28mm x 15mm	5	
CPG415032	28mm x 22mm	5	



Note: Fittings should be kept in original packaging to prevent O-ring lubrication drying out before use.

CPG418 Gas Equal Tee

CODE	SIZE	PACK QTY	PRICE
CPG418001	15mm	10	
CPG418002	22mm	10	
CPG418003	28mm	4	



CPG418 Gas Reducing Tee

CODE	SIZE	PACK QTY	PRICE
CPG418211	22mm x 15mm x 15mm	10	
CPG418212	22mm x 15mm x 22mm	10	
CPG418221	22mm x 22mm x 15mm	10	
CPG418313	28mm x 15mm x 28mm	5	
CPG418323	28mm x 22mm x 28mm	5	
CPG418332	28mm x 28mm x 22mm	5	



CPG419 Gas Fitting Reducer

CODE	SIZE	PACK QTY	PRICE
CPG419021	22mm x 15mm	10	
CPG419031	28mm x 15mm	10	
CPG419032	28mm x 22mm	10	



CPG425 Gas Obtuse Street Elbow

CODE	SIZE	PACK QTY	PRICE
CPG425001	15mm	10	
CPG425002	22mm	10	
CPG425003	28mm	10	



CPG435 Gas Street Elbow

CODE	SIZE	PACK QTY	PRICE
CPG435001	15mm	10	
CPG435002	22mm	10	
CPG435003	28mm	10	



CPG445 Gas Obtuse Bend

CODE	SIZE	PACK QTY	PRICE
CPG445001	15mm	10	
CPG445002	22mm	10	
CPG445003	28mm	10	



CPG451 Gas Stop End

CODE	SIZE	PACK QTY	PRICE
CPG451001	15mm	10	
CPG451002	22mm	10	
CPG451003	28mm	10	



Note: Fittings should be kept in original packaging to prevent O-ring lubrication drying out before use.



Instantor[®]

Copper Press Fittings

TECHNICAL INFORMATION

PRESSING PROFILE:

VI Profile - Sizes: ½", ¾" & 1"

M Profile - Sizes: 15mm, 22mm, 28mm

APPLICATION:

Instantor Gas Copper Press Fittings are designed to be used with half-hard copper tubes (R250) or hard copper tubes (R290) with a maximum diameter of 54mm according to GASTEC QA Approval Requirement 5. Instantor Gas Copper Press Fittings are suitable for domestic gas installations for the transport of gaseous fuels in accordance to the 2nd & 3rd family gases. The maximum operating pressure is 200mbar.

Instantor Gas Copper Press Fitting are for gas only and are stamped with GASTEC in yellow markings on the body of each fitting. The O-rings are constructed from premium HNBR which are approved to EN549 & EN682 for use in gas fuel services and are yellow in colour for identification purposes.

SYSTEM TESTING:

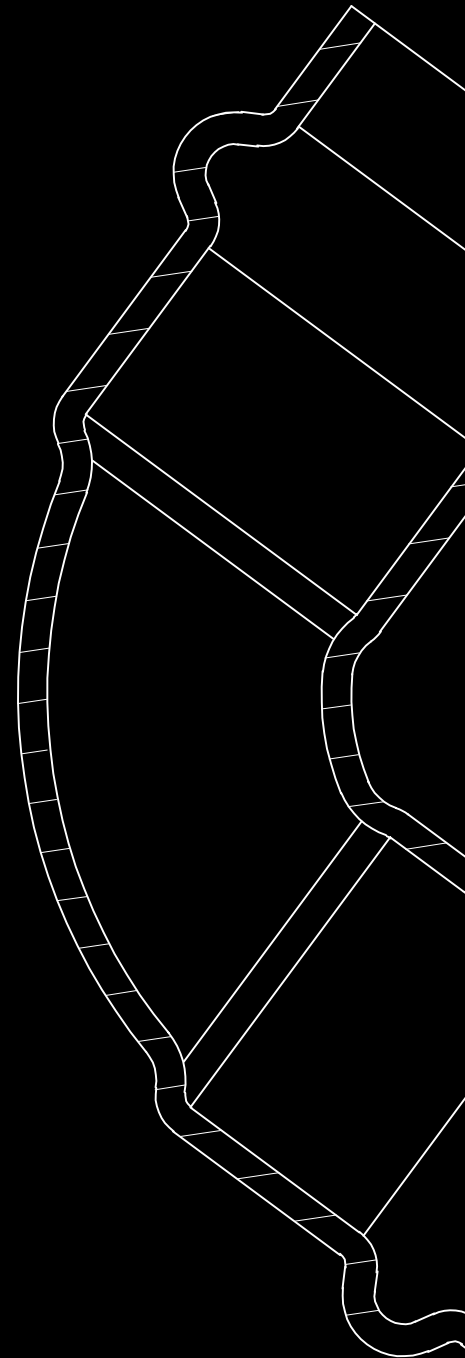
Pressure testing on Instantor Copper Press fittings should normally be carried out using air/leak detection spray in accordance with local regulations and standards e.g., IS813 and RGI.

All joints installed in the system must remain completely visible and accessible until the system has been successfully leak and pressure tested. Final inspections should then be carried out to confirm system is leak tight and sound.

GUARANTEE:

Copper is known for its durability, corrosion resistance, thermal conductivity, and hygienic qualities. In some cases, (sleeving/ marking is required - follow local building standards e.g IS813) external protection may be required to protect against corrosive conditions.

Instantor Copper Press fittings are guaranteed for 25 years provided they have been installed following correct procedure within operating conditions for which they are designed, by a fully competent person using the correct pressing equipment which holds a valid calibration certificate.





CERTIFICATION:



Imperial & Metric Instantor Gas Copper Press
KIWA GASTEC QA Approval Number: 110435/01





Instantor[®]

Stainless Steel Press

INSTANTOR
STAINLESS STEEL PRESS



Instantor Stainless Steel Press fittings & pipe are suitable for a wide range of applications in both domestic and commercial settings due to the high level of mechanical strength and durability.

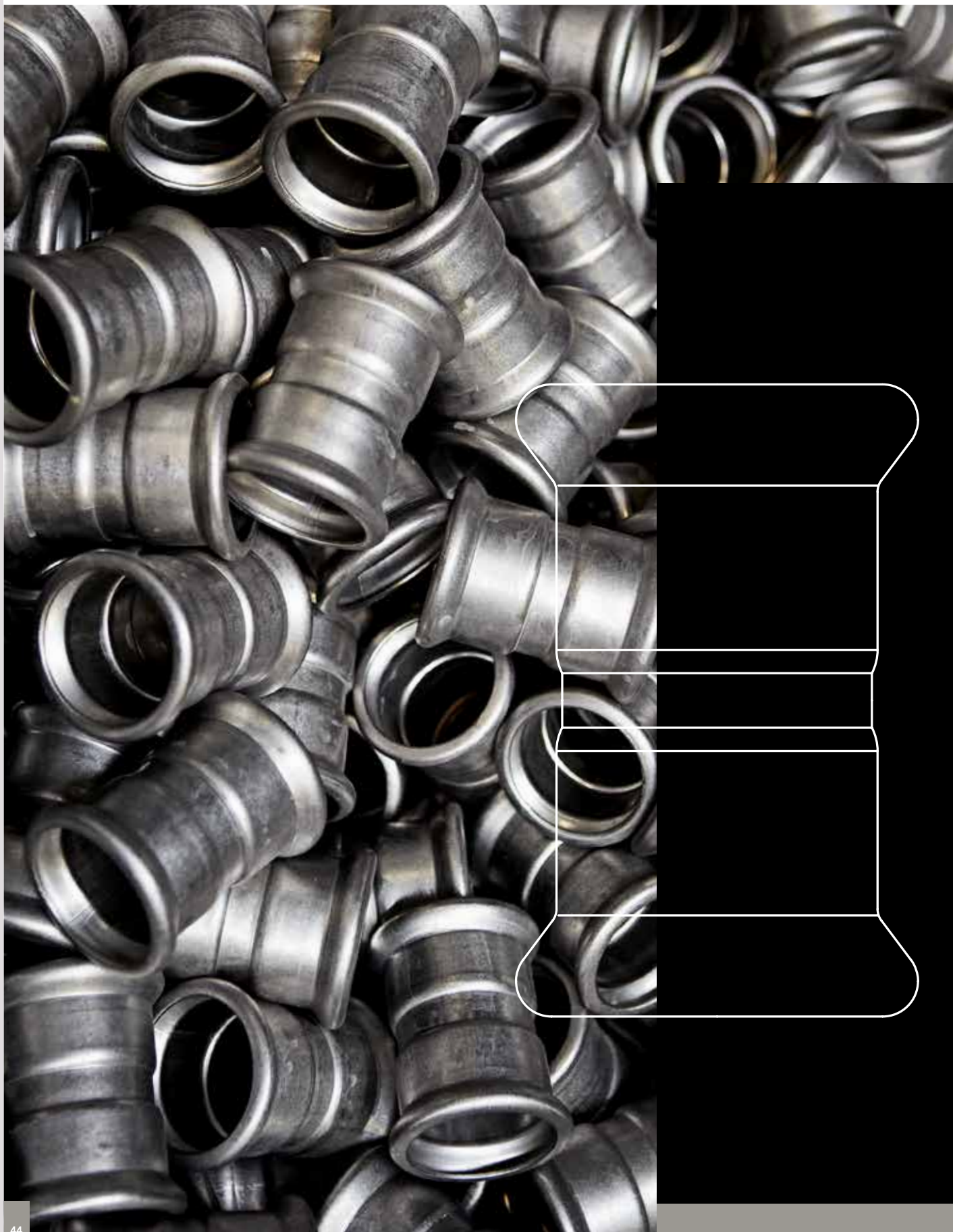
Instantor Stainless Steel Press has undergone thorough testing and evaluation resulting in certification in industry recognised approvals such as WRAS, BSI Kitemark & DVGW.

The visual appeal and sustainability of the stainless steel finish renders it a desirable choice for installations in food & pharmaceutical industries to name a few.

Water Fittings feature black EPDM O Rings, whilst Gas Fittings are identified with a yellow marking on the body of the fitting and feature yellow HNBR O Rings.









Instantor[®]

Stainless Steel Press

FEATURES

- **CERTIFIED** - DVGW, BSI Kitemark & WRAS Certified
- **SUPERIOR MATERIAL** - 316L Stainless Steel provides corrosion, fire, heat and impact resistance.
- **QUICK TO INSTALL** - Installation complete in just 5 steps. Cut, Calibrate, Check, Mark & Press
- **SUITABILITY** - Offering a solution for water, gas, oil, solar, hydrocarbon, compressed air & saturated steam applications
- **EXTENSIVE OFFERING** - Sizing from 15mm - 54mm suitable for domestic & commercial installations
- **AESTHETIC FINISH** - Desirable decorative stainless steel finish

INSTALLATION INSTRUCTIONS



CUT

1. Ensure that the fitting is the correct size for the tube being used. Cut the pipe to length using a good quality pipe cutter or rotary pipe cutter. It is important that pipe ends are clean, cut square, and the pipe is not deformed. High speed grinding wheels are not suitable.



CALIBRATE

2. All burrs and sharp edges should be removed. Using a de-burring tool to both the inside and outside of the pipe, leaving an external chamfer. Wipe the pipe end clean. The pipe ends should be free from scratches or scores for a distance not less than the socket depth. **NOTE:** A poorly calibrated pipe could damage the O-ring on insertion.



CHECK

3. Before inserting the pipe, check the O-ring is seated, lubricated and free from damage. (Re-moisten O-ring with water if necessary**)



MARK

4. Insert the pipe fully into the socket of the fitting until it hits the pipe stop (or until pipes meet in the middle in fittings without a pipe stop). Mark the insertion depth with black marker to ensure the pipe has been fully inserted before pressing.



PRESS

5. Making sure to select the correct profile Jaw ('VI' for Imperial/Irish Instantor Copper Press), execute the press cycle. After the press tool cycle is complete remove the Press Jaws and check that the socket depth marking on the pipe has remained in place, adjacent to the mouth of the fitting.

NOTE: Fittings should be kept in original packaging to protect the O-ring and prevent drying out of lubrication.

TECHNICAL SUMMARY

Water Applications (EPDM O-ring)

Max Operating Pressure: 16 bar

Operating Temperature: -20°C to +110°C

Gas Applications (HNBR O-ring)

Max Operating Pressure: 5 bar

Operating Temperature: -20°C to +70°C

Oil, Solar, Hydrocarbon & Compressed Air Applications (FKM Green O-ring)

Max Operating Pressure: 16 bar

Operating Temperature: -20°C to +200°C

Saturated Steam Applications (FKM Red O-ring)

Max Operating Pressure: 7 bar

Operating Temperature: -10°C to +160°C

Further technical information available, see page 40

WATER

SP410 Straight Coupler

CODE	SIZE	PACK QTY	PRICE
SP410001	15mm	20	
SP410002	22mm	20	
SP410003	28mm	20	
SP410004	35mm	10	
SP410005	42mm	4	
SP410006	54mm	4	



SP410 Straight Slip Coupler

CODE	SIZE	PACK QTY	PRICE
SP4100S1	15mm	20	
SP4100S2	22mm	20	
SP4100S3	28mm	20	
SP4100S4	35mm	10	
SP4100S5	42mm	4	
SP4100S6	54mm	4	



SP411 Male Adaptor

CODE	SIZE	PACK QTY	PRICE
SP411001	15mm x 1/2" MI	20	
SP411012	15mm x 3/4" MI	20	
SP411021	22mm x 1/2" MI	20	
SP411002	22mm x 3/4" MI	20	
SP411023	22mm x 1" MI	20	
SP411032	28mm x 3/4" MI	20	
SP411003	28mm x 1" MI	20	
SP411034	28mm x 1 1/4" MI	20	
SP411043	35mm x 1" MI	10	
SP411004	35mm x 1 1/4" MI	10	
SP411045	35mm x 1 1/2" MI	10	
SP411054	42mm x 1 1/4" MI	4	
SP411005	42mm x 1 1/2" MI	4	
SP411065	54mm x 1 1/2" MI	4	
SP411006	54mm x 2" MI	4	



Large sizes also available. Please contact our sales team for more information.

SP412 Female Adaptor

CODE	SIZE	PACK QTY	PRICE
SP412001	15mm x ½" FI	20	
SP412012	15mm x ¾" FI	20	
SP412021	22mm x ½" FI	20	
SP412002	22mm x ¾" FI	20	
SP412023	22mm x 1" FI	20	
SP412032	28mm x ¾" FI	20	
SP412003	28mm x 1" FI	20	
SP412034	28mm x 1¼" FI	20	
SP412043	35mm x 1" FI	10	
SP412004	35mm x 1¼" FI	10	
SP412045	35mm x 1½" FI	10	
SP412054	42mm x 1¼" FI	4	
SP412005	42mm x 1½" FI	4	
SP412065	54mm x 1½" FI	4	
SP412006	54mm x 2" FI	4	



SP415 90° F.I x F.I Elbow

CODE	SIZE	PACK QTY	PRICE
SP415001	15mm	20	
SP415002	22mm	20	
SP415003	28mm	20	
SP415004	35mm	10	
SP415005	42mm	4	
SP415006	54mm	4	



SP418 Equal Tee

CODE	SIZE	PACK QTY	PRICE
SP418001	15mm	20	
SP418002	22mm	20	
SP418003	28mm	20	
SP418004	35mm	10	
SP418005	42mm	4	
SP418006	54mm	4	



SP418 Reducing Tee

CODE	SIZE	PACK QTY	PRICE
SP418221	22mm x 22mm x 15mm	20	
SP418331	28mm x 28mm x 15mm	10	
SP418332	28mm x 28mm x 22mm	10	
SP418441	35mm x 35mm x 15mm	10	
SP418442	35mm x 35mm x 22mm	10	
SP418443	35mm x 35mm x 28mm	10	
SP418551	42mm x 42mm x 15mm	4	
SP418552	42mm x 42mm x 22mm	4	
SP418553	42mm x 42mm x 28mm	4	
SP418554	42mm x 42mm x 35mm	4	
SP418661	54mm x 54mm x 15mm	4	
SP418662	54mm x 54mm x 22mm	4	
SP418663	54mm x 54mm x 28mm	4	
SP418664	54mm x 54mm x 35mm	4	
SP418665	54mm x 54mm x 42mm	4	



Large sizes also available. Please contact our sales team for more information.

SP419 M.I x F.I Reducer

CODE	SIZE	PACK QTY	PRICE
SP419021	22mm x 15mm	20	
SP419031	28mm x 15mm	20	
SP419032	28mm x 22mm	20	
SP419041	35mm x 15mm	10	
SP419042	35mm x 22mm	10	
SP419043	35mm x 28mm	10	
SP419051	42mm x 15mm	4	
SP419052	42mm x 22mm	4	
SP419053	42mm x 28mm	4	
SP419054	42mm x 35mm	4	
SP419061	54mm x 15mm	4	
SP419062	54mm x 22mm	4	
SP419063	54mm x 28mm	4	
SP419064	54mm x 35mm	4	
SP419065	54mm x 42mm	4	



SP425 45° M.I x F.I Elbow

CODE	SIZE	PACK QTY	PRICE
SP425001	15mm	20	
SP425002	22mm	20	
SP425003	28mm	20	
SP425004	35mm	10	
SP425005	42mm	4	
SP425006	54mm	4	



SP435 90° M.I x F.I Elbow

CODE	SIZE	PACK QTY	PRICE
SP435001	15mm	20	
SP435002	22mm	20	
SP435003	28mm	20	
SP435004	35mm	10	
SP435005	42mm	4	
SP435006	54mm	4	



SP445 45° F.I x F.I Elbow

CODE	SIZE	PACK QTY	PRICE
SP445001	15mm	20	
SP445002	22mm	20	
SP445003	28mm	20	
SP445004	35mm	10	
SP445005	42mm	4	
SP445006	54mm	4	



Large sizes also available. Please contact our sales team for more information.

SP430 Tee Press x Press x F.I

CODE	SIZE	PACK QTY	PRICE
SP430001	15mm x 15mm x 1/2" FI	20	
SP430221	22mm x 22mm x 1/2" FI	20	
SP430002	22mm x 22mm x 3/4" FI	20	
SP430331	28mm x 28mm x 1/2" FI	10	
SP430332	28mm x 28mm x 3/4" FI	10	
SP430003	28mm x 28mm x 1" FI	10	
SP430441	35mm x 35mm x 1/2" FI	10	
SP430442	35mm x 35mm x 3/4" FI	10	
SP430443	35mm x 35mm x 1" FI	10	
SP430004	35mm x 35mm x 1 1/4" FI	10	
SP430551	42mm x 42mm x 1/2" FI	4	
SP430552	42mm x 42mm x 3/4" FI	4	
SP430553	42mm x 42mm x 1" FI	4	
SP430005	42mm x 42mm x 1 1/2" FI	4	
SP430661	54mm x 54mm x 1/2" FI	2	
SP430662	54mm x 54mm x 3/4" FI	2	
SP430663	54mm x 54mm x 1" FI	2	
SP430006	54mm x 54mm x 2" FI	2	



SP440 Flanged Adaptor PN16

CODE	SIZE	PACK QTY	PRICE
SP440001	15mm	4	
SP440002	22mm	4	
SP440003	28mm	4	
SP440004	35mm	4	
SP440005	42mm	4	
SP440006	54mm	4	



SP451 Stop End

CODE	SIZE	PACK QTY	PRICE
SP451001	15mm	20	
SP451002	22mm	10	
SP451003	28mm	10	
SP451004	35mm	10	
SP451005	42mm	4	
SP451006	54mm	4	



SP400 Pre-formed Pipe Bridge

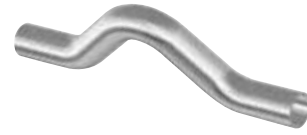
CODE	SIZE	PACK QTY	PRICE
SP400011	15mm	20	
SP400012	22mm	20	
SP400013	28mm	10	



Large sizes also available. Please contact our sales team for more information.

SP400 Pipe Bridge

CODE	SIZE	PACK QTY	PRICE
SP400014	15mm	20	
SP400015	22mm	20	
SP400016	28mm	10	



SPU11 Male Union Connector

CODE	SIZE	PACK QTY	PRICE
SPU11001	15mm x 1/2" MI	20	
SPU11012	15mm x 3/4" MI	20	
SPU11023	22mm x 1" MI	20	
SPU11002	22mm x 3/4" MI	20	
SPU11003	28mm x 1" MI	20	
SPU11034	28mm x 1 1/4" MI	20	
SPU11004	35mm x 1 1/4" MI	10	
SPU11005	42mm x 1 1/2" MI	4	
SPU11006	54mm x 2" MI	2	



SPU12 Female Union Connector

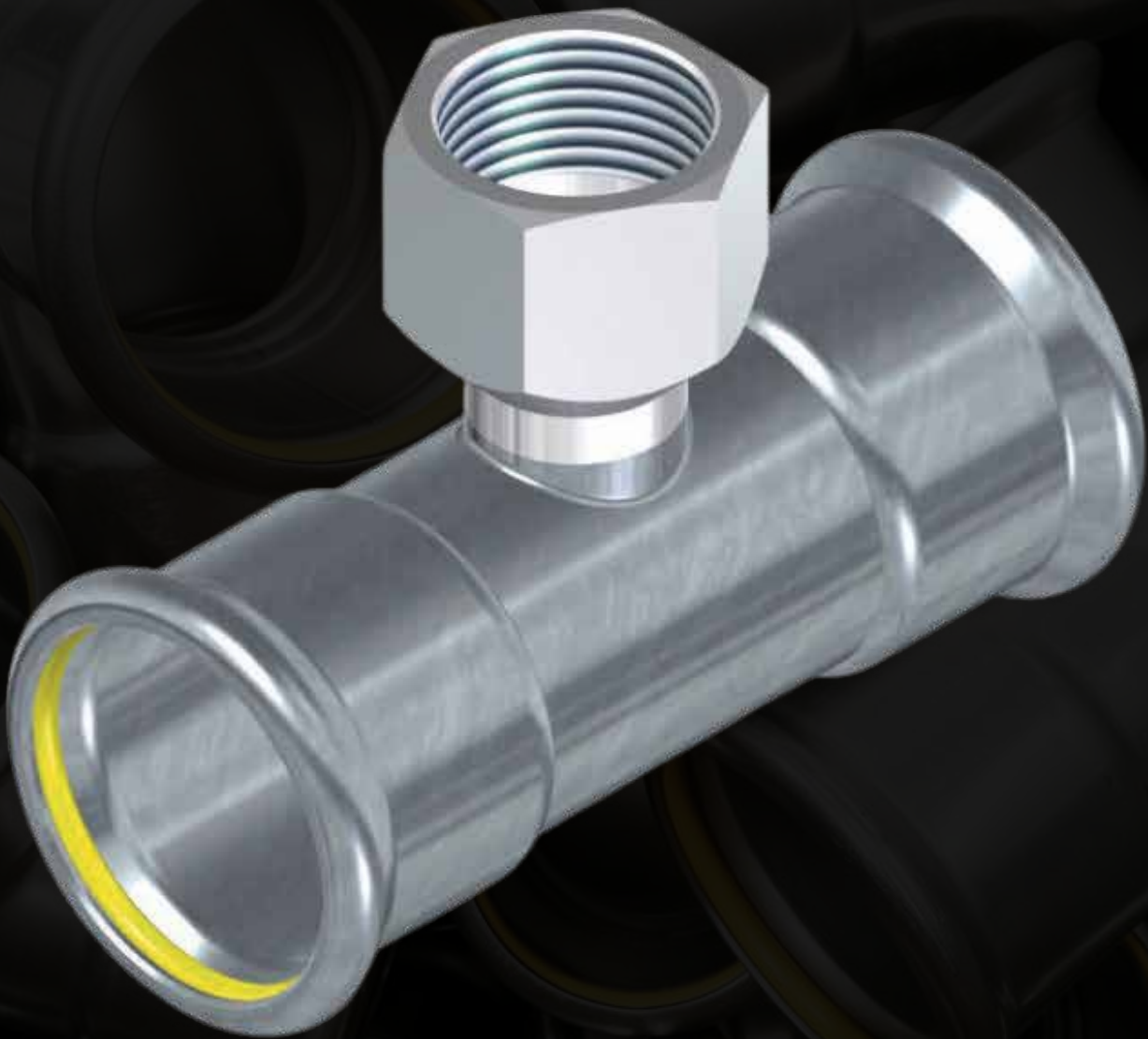
CODE	SIZE	PACK QTY	PRICE
SPU12001	15mm x 1/2" FI	20	
SPU12012	15mm x 3/4" FI	20	
SPU12023	22mm x 1" FI	20	
SPU12002	22mm x 3/4" FI	20	
SPU12003	28mm x 1" FI	20	
SPU12034	28mm x 1 1/4" FI	20	
SPU12004	35mm x 1 1/4" FI	10	
SPU12005	42mm x 1 1/2" FI	4	
SPU12006	54mm x 2" FI	2	



Elongation Compensator

CODE	SIZE	PACK QTY	PRICE
SP410111	15mm	1	
SP410112	22mm	1	
SP410113	28mm	1	
SP410114	35mm	1	
SP410115	42mm	1	
SP410116	54mm	1	





INSTANTOR® STAINLESS STEEL PRESS - GAS

GAS

GAS

SPG410 Gas Straight Coupler

CODE	SIZE	PACK QTY	PRICE
SPG410001	15mm	20	
SPG410002	22mm	20	
SPG410003	28mm	20	
SPG410004	35mm	10	
SPG410005	42mm	4	
SPG410006	54mm	4	



SPG410 Gas Straight Slip Coupler

CODE	SIZE	PACK QTY	PRICE
SPG4100S1	15mm	20	
SPG4100S2	22mm	20	
SPG4100S3	28mm	20	
SPG4100S4	35mm	10	
SPG4100S5	42mm	4	
SPG4100S6	54mm	4	



SPG411 Gas Male Adaptor

CODE	SIZE	PACK QTY	PRICE
SPG411001	15mm x 1/2" MI	20	
SPG411012	15mm x 3/4" MI	20	
SPG411021	22mm x 1/2" MI	20	
SPG411002	22mm x 3/4" MI	20	
SPG411023	22mm x 1" MI	20	
SPG411032	28mm x 3/4" MI	20	
SPG411003	28mm x 1" MI	20	
SPG411034	28mm x 1 1/4" MI	20	
SPG411043	35mm x 1" MI	10	
SPG411004	35mm x 1 1/4" MI	10	
SPG411045	35mm x 1 1/2" MI	10	
SPG411054	42mm x 1 1/4" MI	4	
SPG411005	42mm x 1 1/2" MI	4	
SPG411065	54mm x 1 1/2" MI	4	
SPG411006	54mm x 2" MI	4	



Large sizes also available. Please contact our sales team for more information.

SPG412 Gas Female Adaptor

CODE	SIZE	PACK QTY	PRICE
SPG412001	15mm x ½" FI	20	
SPG412012	15mm x ¾" FI	20	
SPG412021	22mm x ½" FI	20	
SPG412002	22mm x ¾" FI	20	
SPG412023	22mm x 1" FI	20	
SPG412032	28mm x ¾" FI	20	
SPG412003	28mm x 1" FI	20	
SPG412034	28mm x 1¼" FI	20	
SPG412043	35mm x 1" FI	10	
SPG412004	35mm x 1¼" FI	10	
SPG412045	35mm x 1½" FI	10	
SPG412054	42mm x 1¼" FI	4	
SPG412005	42mm x 1½" FI	4	
SPG412065	54mm x 1½" FI	4	
SPG412006	54mm x 2" FI	4	



SPG415 Gas 90° F.I x F.I Elbow

CODE	SIZE	PACK QTY	PRICE
SPG415001	15mm	20	
SPG415002	22mm	20	
SPG415003	28mm	20	
SPG415004	35mm	10	
SPG415005	42mm	4	
SPG415006	54mm	2	



SPG418 Gas Equal Tee

CODE	SIZE	PACK QTY	PRICE
SPG418001	15mm	20	
SPG418002	22mm	20	
SPG418003	28mm	10	
SPG418004	35mm	10	
SPG418005	42mm	4	
SPG418006	54mm	2	



SPG418 Gas Reducing Tee

CODE	SIZE	PACK QTY	PRICE
SPG418221	22mm x 22mm x 15mm	20	
SPG418331	28mm x 28mm x 15mm	10	
SPG418332	28mm x 28mm x 22mm	10	
SPG418441	35mm x 35mm x 15mm	10	
SPG418442	35mm x 35mm x 22mm	10	
SPG418443	35mm x 35mm x 28mm	10	
SPG418551	42mm x 42mm x 15mm	4	
SPG418552	42mm x 42mm x 22mm	4	
SPG418553	42mm x 42mm x 28mm	4	
SPG418554	42mm x 42mm x 35mm	4	
SPG418661	54mm x 54mm x 15mm	2	
SPG418662	54mm x 54mm x 22mm	2	
SPG418663	54mm x 54mm x 28mm	2	
SPG418664	54mm x 54mm x 35mm	2	
SPG418665	54mm x 54mm x 42mm	2	



Large sizes also available. Please contact our sales team for more information.

SPG417 Gas Female Angle Adaptor

CODE	SIZE	PACK QTY	PRICE
SPG417001	15mm x 1/2" FI	20	
SPG417002	22mm x 3/4" FI	10	
SPG417003	28mm x 1" FI	10	
SPG417004	35mm x 1 1/4" FI	10	



SPG419 Gas M.I x F.I Reducer

CODE	SIZE	PACK QTY	PRICE
SPG419021	22mm x 15mm	20	
SPG419031	28mm x 15mm	20	
SPG419032	28mm x 22mm	20	
SPG419041	35mm x 15mm	10	
SPG419042	35mm x 22mm	10	
SPG419043	35mm x 28mm	10	
SPG419051	42mm x 15mm	4	
SPG419052	42mm x 22mm	4	
SPG419053	42mm x 28mm	4	
SPG419054	42mm x 35mm	4	
SPG419061	54mm x 15mm	4	
SPG419062	54mm x 22mm	4	
SPG419063	54mm x 28mm	4	
SPG419064	54mm x 35mm	4	
SPG419065	54mm x 42mm	4	



SPG425 Gas 45° M.I x F.I Elbow

CODE	SIZE	PACK QTY	PRICE
SPG425001	15mm	20	
SPG425002	22mm	20	
SPG425003	28mm	10	
SPG425004	35mm	10	
SPG425005	42mm	4	
SPG425006	54mm	2	



SPG435 Gas 90° M.I x F.I Elbow

CODE	SIZE	PACK QTY	PRICE
SPG435001	15mm	20	
SPG435002	22mm	20	
SPG435003	28mm	10	
SPG435004	35mm	10	
SPG435005	42mm	4	
SPG435006	54mm	2	



SPG445 Gas 45° F.I x F.I Elbow

CODE	SIZE	PACK QTY	PRICE
SPG445001	15mm	20	
SPG445002	22mm	20	
SPG445003	28mm	10	
SPG445004	35mm	10	
SPG445005	42mm	4	
SPG445006	54mm	2	



Large sizes also available. Please contact our sales team for more information.

SPG430 Gas Tee Press x Press x F.I

CODE	SIZE	PACK QTY	PRICE
SPG430001	15mm x 15mm x 1/2" FI	20	
SPG430221	22mm x 22mm x 1/2" FI	20	
SPG430002	22mm x 22mm x 3/4" FI	20	
SPG430331	28mm x 28mm x 1/2" FI	10	
SPG430332	28mm x 28mm x 3/4" FI	10	
SPG430003	28mm x 28mm x 1" FI	10	
SPG430441	35mm x 35mm x 1/2" FI	10	
SPG430442	35mm x 35mm x 3/4" FI	10	
SPG430443	35mm x 35mm x 1" FI	10	
SPG430004	35mm x 35mm x 1 1/4" FI	10	
SPG430551	42mm x 42mm x 1/2" FI	4	
SPG430552	42mm x 42mm x 3/4" FI	4	
SPG430553	42mm x 42mm x 1" FI	4	
SPG430005	42mm x 42mm x 1 1/2" FI	4	
SPG430661	54mm x 54mm x 1/2" FI	2	
SPG430662	54mm x 54mm x 3/4" FI	2	
SPG430663	54mm x 54mm x 1" FI	2	
SPG430006	54mm x 54mm x 2" FI	2	



SPG440 Gas Flanged Adaptor PN16

CODE	SIZE	PACK QTY	PRICE
SPG440001	15mm	4	
SPG440002	22mm	4	
SPG440003	28mm	4	
SPG440004	35mm	4	
SPG440005	42mm	4	
SPG440006	54mm	4	



SPG451 Gas Stop End

CODE	SIZE	PACK QTY	PRICE
SPG451001	15mm	20	
SPG451002	22mm	10	
SPG451003	28mm	10	
SPG451004	35mm	10	
SPG451005	42mm	4	
SPG451006	54mm	4	



Valve Connector With Swivel

CODE	SIZE	PACK QTY	PRICE
SPGS12001	15mm x 1/2" FI	20	
SPGS12002	22mm x 3/4" FI	20	
SPGS12003	28mm x 1" FI	10	
SPGS12004	35mm x 1 1/4" FI	10	
SPGS12005	42mm x 1 1/2" FI	4	
SPGS12006	54mm x 2" FI	4	



Large sizes also available. Please contact our sales team for more information.

PIPE

Instantor Stainless Steel Pipe - 5M Length

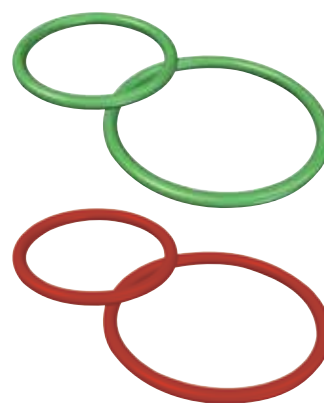
CODE	SIZE	BUNDLE QTY	PRICE
ISSP111	15mm x 0.6mm	80	
ISSP112	22mm x 0.7mm	61	
ISSP113	28mm x 0.8mm	44	
ISSP114	35mm x 1.0mm	44	
ISSP115	42mm x 1.2mm	44	
ISSP116	54mm x 1.2mm	37	



O-RINGS

FKM O-Rings

CODE	SIZE	BUNDLE QTY	PRICE
SP000001	15mm (Red)	10	
SP000002	22mm (Red)	10	
SP000003	28mm (Red)	10	
SP000004	35mm (Red)	10	
SP000005	42mm (Red)	10	
SP000006	54mm (Red)	10	
SP000007	15mm (Green)	10	
SP000008	22mm (Green)	10	
SP000009	28mm (Green)	10	
SP000010	35mm (Green)	10	
SP000011	42mm (Green)	10	
SP000012	54mm (Green)	10	



FKM O-ring (Green) Fluoroelastomer Rubber

- Applications: Oils, hydrocarbons, solar, fuels, technical liquids, and compressed air (oil purity class 0-X).
- Temperature Range: -20°C to +200°C dry app (hot air) or wet app (oils or primary solar energy circuits)
- Max Pressure: 16 Bar

FKM O-ring (Red) Fluoroelastomer Rubber

- Applications: Saturated steam and solar installations.
- Temperature Range: -10°C to +160°C (constant) Short peak exposure +170/180°C.
- Max Pressure: 7 Bar

Large sizes also available. Please contact our sales team for more information.



Instantor[®]
Stainless Steel Press

CERTIFICATION:



Instantor Stainless Steel Press Fittings & Pipe
WRAS Approval Number: 2011112



Instantor Stainless Steel Gas Press Fittings
BSI Kitemark Certificate Number: KM779147



Instantor Stainless Steel Gas Press Fittings
DVGW Certificate Number: DW-8511BU0128
Instantor Stainless Steel Pipe
DVGW Certificate Number: DW-7301BS0260

TECHNICAL INFORMATION

PRESSING PROFILE:

M Profile - Sizes: 15mm, 22mm, 28mm, 35mm, 42mm & 54mm

APPLICATION:

Black EPDM O-rings Ethylene rubber: - 20°C to +100°C

Suitable for use in the following applications:

- Hot & cold potable water systems
- Fire protection services
- Water based heating systems
- Compressed air (oil free)

Yellow HNBR O-rings Nitrile rubber: -20°C to +70°C

Suitable for use in the following applications:

- GAS MOP1 & MOP5, GT1

SYSTEM TESTING:

The finished pipes undergo leak-tightness testing before being covered or painted. Water is used for testing in drinking water and heating installations. The results of the leak-tightness testing should be appropriately documented. If it is anticipated that the pipe installation will not be operational for an extended period after the leak-tightness test, and to protect the installation against potential corrosive processes (with a high probability of puncture corrosion), we recommend conducting the leak-tightness test using air instead of water (please verify whether corresponding authorization is required for conducting the air test).

Drinking Water Installations

The leak-tightness test for the installed pipes is conducted in accordance with current regulations. The pipes should be filled with filtered water to eliminate any air. This leak-tightness test is employed for both the preliminary and main test; the preliminary test may suffice for smaller parts of the installation, such as connection and distribution piping in wet areas.

Preliminary test: Apply a test pressure equivalent to the acceptable overpressure plus 5 bar. Repeat this test pressure twice for ten minutes, within a total interval of 30 minutes. After an additional 30 minutes, the test pressure should not have decreased by more than 0.6 bar (0.1 bar per 5 minutes).

Main test: Immediately following the preliminary test. The test lasts 120 minutes. After this 120-minute period, the pressure reading from the end of the preliminary test should not have fallen by more than 0.2 bar. There should be no visible signs of leakage in any part of the installation checked.

Air tightness test: If deemed appropriate, should be conducted with the corresponding authorization.

Heating Installations

The leak-tightness test for the pipes is conducted using water. In water-based heating systems, the test pressure is set at 1.3 times higher than the overall pressure at each point in the installation, with a minimum pressure increase of 1 bar. If possible, immediately after the leak-tightness test using cold water, the installation should be checked to verify its leak-tightness at its maximum temperature. This is accomplished by heating the water to the maximum temperature on which the calculation is based. The pipes are then flushed with drinking water before being put into operation.

GUARANTEE:

Instantor Stainless Steel Press Fittings and Pipes come with a 10-year warranty, covering defects in manufacture attributable to our areas of responsibility. The warranty is applicable when the joint is created using Instantor Stainless Steel Press fittings and pipes, and the joint is press-fitted under a pressure of not less than 19kN for pipe diameters of 15-28mm and 32kN for pipe diameters of 28-54mm, using an Instantor Press M-profile jaw. For diameters greater than 54mm, please consult our technical department.

This warranty is not valid if the installation was performed by non-professionals or if the assembly instructions in our manual were not followed. Civil responsibility is limited to a period of ten years after the installation. In the event of damage, it must be communicated to us in writing within five days of the accident. Defective Instantor Stainless Steel Press Fittings and Pipes must be retained and made available to our technicians for the necessary checks in each case.



Instantor[®]

Tools

**INSTANTOR
TOOLS**



The **Instantor Press Tool** has been developed for the professional installer and is user-friendly, durable and exceptionally reliable.

Stand out features include a lightweight design that makes the tool easy to hold and use, a rotating head for improved installation flexibility and an LED light to enhance visibility in poorly lit areas.

There are two tools in the range, the first of which will suit fittings up to and including 32mm or 1" and the second can be used with fittings up to 63mm.

We also offer a range of jaws to suit different profile fittings, TH for Instantor Press Fittings, VI for Instantor Imperial Copper Press Fittings and M for Instantor Metric Copper Press Fittings & Instantor Stainless Steel Press Fittings.

Warranty extended to 3 years if the device is registered at instantor.ie.
For further information on warranty and calibration please visit instantor.ie.

35% FASTER INSTALLATIONS





VI PROFILE

Mini Press Tool 18V - VI Kit

CODE	CONTENTS	PRICE
IT2020VIK	18V Mini Press Tool	
	1/2", 3/4" & 1" VI Jaws	
	2 x 4.0Ah Batteries	
	Storage Case	
	Output - 19kN	



VI Jaws



CODE	SIZE	PRICE
IT20019	1/2" VI	
IT20020	3/4" VI	
IT20021	1" VI	

VI Jaws - Angled

CODE	SIZE	PRICE
IT20065	Adaptor	
IT20060	1/2" VI - Angled	
IT20061	3/4" VI - Angled	
IT20062	1" VI - Angled	



VI Jaw Case

CODE	CONTENTS	PRICE
IT20050VIK	1/2", 3/4" & 1" VI Jaws & Case	
IT20050	Case Only	



M PROFILE

Mini Press Tool 18V - M Kit

CODE	CONTENTS	PRICE
IT2020MK	18V Mini Press Tool	
	15, 22 & 28mm M Jaws	
	2 x 4.0Ah Batteries	
	Storage Case	
	Output - 19kN	



Large Press Tool 18V - M Kit

CODE	CONTENTS	PRICE
IT2040MK	18V Mini Press Tool	
	35, 42 & 54mm M Jaws	
	Adaptor Tongs (Required for 42 & 54mm Jaws)	
	2 x 4.0Ah Batteries	
	Storage Case	
	Output - 32kN	



M Jaws

CODE	SIZE	PRICE
IT20030	15mm M	
IT20031	22mm M	
IT20032	28mm M	
IT20033	35mm M	
IT20034*	42mm M Jaw Ring	
IT20035*	54mm M Jaw Ring	
IT20029	Adaptor Tong for 42 & 54mm	

*Requires Adaptor Tong IT20029



M Jaws - Angled

CODE	SIZE	PRICE
IT20065	Adaptor	
IT20063	22mm M - Angled	
IT20064	28mm M - Angled	

M Jaw Case

CODE	CONTENTS	PRICE
IT20050VIK	15, 22 & 28mm Jaws & Case	
IT20050	Case Only	



TH PROFILE

Mini Press Tool 18V - TH Kit

CODE	CONTENTS	PRICE
IT2020THK	18V Mini Press Tool	
	16, 20, 26 & 32mm TH Jaws	
	2 x 4.0Ah Batteries	
	Storage Case	
	Output - 19kN	



Large Press Tool 18V - TH Kit

CODE	CONTENTS	PRICE
IT2040THK	18V Mini Press Tool	
	40, 50 & 63mm M Jaws	
	Adaptor Tongs (Required for 50 & 63mm Jaws)	
	2 x 4.0Ah Batteries	
	Storage Case	
	Output - 32kN	



TH Jaws

CODE	SIZE	PRICE
IT20022	16mm TH	
IT20023	20mm TH	
IT20024	26mm TH	
IT20025	32mm TH	
IT20026	40mm TH	
IT20027*	50mm TH Jaw Ring	
IT20028*	63mm TH Jaw Ring	
IT20029	Adaptor Tong for 50 & 63mm	

*Requires Adaptor Tong IT20029



TH Jaw Case

CODE	CONTENTS	PRICE
IT20050THK	16, 20, 26 & 32mm Jaws & Case	
IT20050	Case Only	



ACCESSORIES

4.0Ah Battery

CODE	DESCRIPTION	PRICE
IT20042	Spare 4.0Ah Battery	



Drill Pipe Reamers

CODE	SIZE	PRICE
IP20050	Full Kit incl. 16, 20, 26 & 32 mm + Manual T-Handle	
IP20051	16mm Drill Reamer	
IP20052	20mm Drill Reamer	
IP20053	26mm Drill Reamer	
IP20054	32mm Drill Reamer	
IP20066	40mm Drill Reamer	
IP20067	50mm Drill Reamer	
IP20059	Manual T-Handle	



Manual Pipe Reamer

CODE	SIZE	BOX QTY	PRICE
IP20010	16mm – 26mm	40	
IP20011	20mm – 32mm	30	



Pipe Cutter

CODE	SIZE	PRICE
IP20016	Up to 32mm	
IP20009	Up to 63mm	



Tube Cutter

CODE	SIZE	PRICE
900115	15mm / 1/2"	
900122	22mm	
900121	3/4"	
900117	28mm	
900123	1"	







Instantor[®]

Press System



Instantor[®]

Copper Press Fittings



Instantor[®]

Stainless Steel Press

Superior Plumbing Products
for **Professional Plumbers**
since **1926**

FREE INSTALLER TRAINING AND
CERTIFICATION ON ALL INSTANTOR SYSTEMS.

Superior Plumbing Products
for **Professional Plumbers**
since **1926**

Sanbra Fyffe Ltd. T/A Instantor
Instantor Works, Santry Avenue
Dublin 9, D09K160, Ireland

Sales: (0)1 842 6255

Email: sales@instantor.ie

www.instantor.ie

