

RANGEmaster

Sinks & Taps



KITCHEN SINK & TAP COLLECTION

Contents

STAINLESS STEEL SINKS

Arlington	12
Rockford	13
Manhattan	13
Oakland	14
Sedona	14
Houston	15
Michigan	16
Glendale	17
Baltimore	18
Cosmo	19
Spectra	20
Kube Undermounts	21
Quad Undermounts	22
Classic Undermounts	23

GRANITE SINKS

Mayon	26
Amethyst	27
Scoria	27
Mica	28
Elements	29
Andesite	30
Paragon	31

FIRE-CLAY CERAMIC SINKS

Austell	34
Rustic	35
Portland	35
Tenby	36
Hartland	37
900mm Farmhouse Double Belfast	38
Farmhouse Belfast	39
Grange	40
Classic Belfast	41
Belfast	41
Rustique	42

TAPS

Filter Taps	48
Pull Out Taps	49
Single Lever Taps	50
Dual Lever Taps	51-54

WASTE DISPOSAL UNITS & ACCESSORIES

Waste Disposal Units	56
Accessories	56

Rangemaster Quality



Our sink and tap collection is renowned for its durable build and high quality. With over 89 years experience manufacturing stainless steel sinks we are the No.1 sink manufacturer in the UK with the majority of our sinks being manufactured at our factory in Long Eaton, Nottingham.

The kitchen sink area is the most used space in the kitchen so it's vital that your chosen sink and tap is built to last in the busiest of environments.

Using the best sourced raw materials available and advanced manufacturing techniques, we design and engineer our products so that they combine functionality, durability and stylish design.

Whether you're retro-fitting or re-styling your kitchen our wide range of sinks and taps cater for all budgets and styles; from the ultra contemporary to the farmhouse-style traditional kitchen schemes.

We are confident our sinks and taps are built to last so that's why we offer a 25 year warranty on our stainless steel & granite sinks collections, 10 years warranty with our fire-clay ceramic sinks and 5 years warranty with our tap collection.



OUR COMMITMENT TO THE ENVIRONMENT

It is testament to our reliability and commitment to the environment that Rangemaster is the proud recipient of double ISO accreditation.

BS EN ISO 9001 certifies that Rangemaster products are designed and manufactured to an internationally recognised quality management system, while BS EN 14001 acknowledges our commitment to continually improving environmental performance by adopting an approved environmental management system.



RANGEMASTER



New Products

NEW IN 2022



We have added many new products to our brochure.

Look out for the **NEW** logo across our pages.



900 FARMHOUSE DOUBLE BELFAST

Our popular Farmhouse sink collection has been extended to include a new 900mm double bowl sink in a contemporary design with slim profile walls and two overflows.

Waste kit included.

Visit pg. **38** to find out more.

GEO INTENSE 4-IN-1 TAP

The GEO Intense 4-in-1 kitchen tap collection provides instant steaming hot 98°C water, crystal clear filtered water and domestic hot and cold water on demand thanks to its compact, yet large capacity boiler which holds 2.1L.

The handle has been ergonomically designed with safety in mind thanks to its push lever mechanism.

Choose from four colour finishes: Chrome, Brushed, Brushed Brass & Matt Black.



RUSTIQUE

Blending style with functionality, the Rustique collection offers a dual installation bowl solution compatible with all worktop types – choose undermount for a modern seamless look, or inset for a more traditional finish.

Waste kit included.

Visit pg. **42** to find out more.



New Products

NEW IN 2021



SPECTRA

Create a striking sink area with Spectra, a new metallic PVD stainless steel collection which is available in three sumptuous shades designed to add dimension and glamour to any contemporary kitchen scheme.

Two bowl options are available; single bowl & 1.5 bowl with left-hand and right-hand variants. Each bowl configuration is available in metallic Graphite, Gold or Copper.

Each sink is supplied with fittings for inset and undermount installation, making these sinks compatible with all worktop types.

A PVD waste kit with coordinating coloured waste cover is also included as standard.

Visit pg. 20 to find out more.



COSMO

Featuring a slim profile top plate, the Cosmo sink sits flat against a worktop providing a sleek and contemporary look when installed.

Available in a single bowl option designed to fit standard 600mm cabinets.

Waste kit included.

Visit pg. 19 to find out more.



HARTLAND

Fully compatible with all worktop materials, get a Belfast look sink without the need of a granite or wooden worktop to accommodate.

Hartland is available as a single bowl option, offering an overall measurement of 622mm wide, which fits 600mm cabinet sizes comfortably.

Waste kit included.

Visit pg. 38 to find out more.

Choosing Your Sink

MATERIAL TYPE



STAINLESS STEEL

Remaining the most popular choice when choosing a kitchen sink, stainless steel is a robust, hygienic and hard-working solution.

Pre-fitted Seals - reducing installation time and ensuring a water tight seal is achieved with the work surface every time.

Micro-Sheen™ Finish - an enhanced soft brushed appearance combined with a polished finish which creates a durable high sheen surface.

Ground Edge Trim - adding an additional textural dimension, the subtle ground edge trim frames the sink beautifully.

Waste Kit Included

25 Year Warranty



GRANITE

For a modern and contemporary look, choose a granite sink, which are available in multiple different design options in an array of different colours.

Durable Material - resistant against knocks, scratches, heat and stains - ideal for busy family lives.

Hygienic Surface - a non-porous material which naturally repels microbes and stains making the sink much easier to clean.

UV Stability - our patent mix of raw materials protects the colouring from fading offering a fade free finish for years to come.

Waste Kit Included

25 Year Warranty



FIRE-CLAY CERAMIC

A fire-clay ceramic sink will create the ultimate statement piece; with a wide variety of installation options available there is a design style suitable for any style of kitchen.

Easy Clean Surface - featuring a smooth glazed surface, fire-clay ceramic sinks are easy to clean as microbes and stains just simply wipe away.

Superior Strength - thanks to the high gloss glazed finish, Rangemaster ceramic sinks are highly resistant against heat, stains and scratches.

Expanded Colour Range - introducing the new Matt Black finish now available in the Grange Belfast range.

Waste Kit Included

10 Year Warranty

INSTALLATION TYPE



INSET

An inset kitchen sink is compatible with any choice of worktop material, making it the most popular design choice. Rangemaster's inset sinks are pre-fitted with seals to create the ultimate barrier against water ingress and prevent potential future damage if water were to seep through, making these sinks a great accompaniment to laminate worktops.

The added benefit of its integrated drainer offers additional food preparation space and allows washed pots to be dried effortlessly.

Inset options are available in:

- Stainless Steel
- Granite
- Fire-Clay Ceramic



UNDERMOUNT

Choose an undermount sink for a sleek, modern and minimalist look. These sinks are installed on the underside of the work surface which extends the worktop area and offers a seamless finished look; increasing the worktop space available makes these sinks an ideal solution for compact kitchen spaces.

Often paired with granite and wooden worktops, an undermount sink is a modern solution for a minimalist kitchen scheme.

Undermount options are available in:

- Stainless Steel
- Granite
- Fire-Clay Ceramic



SIT-ON BELFAST

Create the ultimate statement piece in your kitchen with the addition of a sit-on Belfast sink, traditionally styled; these sinks complement shaker style kitchen cabinetry beautifully. If a contemporary look is preferred, there is an option of the Grange Belfast in a new Matt Black finish.

Featuring generous deep bowls, a sit-on Belfast sink is ideal for washing large pots and pans which can't fit into a dishwasher easily.

Sit-on options are available in:

- Fire-Clay Ceramic

The Durable, Resilient & Stylish Choice

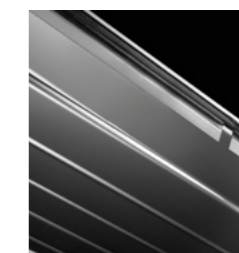
Stainless steel remains the most popular material choice when choosing a kitchen sink due to its hard wearing and long-lasting properties.

Rangemaster stainless steel sinks are all manufactured using high-grade 18/10 stainless steel, in which the additional nickel property included in this material grade offers a long lasting high-sheen finish.

Proudly manufactured in the heart of the midlands in the UK, each sink is hand finished by our experienced craftsmen and supplied with a 25 year warranty offering you peace of mind when purchasing.

There are an array of different designs available suiting inset and undermount installations.

KEY FEATURES



FITTED SEALS

All stainless steel inset sinks are pre-fitted with seals reducing installation time whilst ensuring a perfect, water-tight fit is retained with the work surface.



SUBTLE GROUND EDGE TRIM

All stainless steel inset sinks are finished with a ground edge trim to beautifully frame the sink.



MICRO-SHEEN™ FINISH

All Rangemaster stainless steel sinks feature a Micro-Sheen™ finished surface; which offers a soft brushed appearance with a polished finish. This advanced application provides a lustrous finished look whilst also enhancing the sinks resistance against heat, scratches and stains.

STAINLESS STEEL SINKS



ROCKFORD

The Rockford incorporates classical linear styling and features distinctive bold lines. This versatile sink is suited to a wide range of traditional and contemporary kitchens, while also offering impeccable quality and long term durability.

- Micro-sheen™ finish
- Pre-fitted seals
- Ground edge trim
- Handed drainer design
- Waste kit included



Tap shown: Quadrant Monobloc in chrome TQM1CM/

25
YEAR
WARRANTY

985 x 508mm 1 bowl sink with handed drainer

RK9851L/ - Left-hand drainer
RK9851R/ - Right-hand drainer



Min. base unit: 600mm
Main bowl (L x W x D): 340 x 420 x 190mm
Waste kit: Included

985 x 508mm 1.5 bowl sink with handed drainer

RK9852L/ - Left-hand drainer
RK9852R/ - Right-hand drainer



Min. base unit: 600mm
Main bowl (L x W x D): 340 x 420 x 190mm
Second bowl (L x W x D): 160 x 350 x 130mm
Waste kit: Included

Compatible Accessories

KA09/

Strainer bowl
Stainless steel

For use with 1.5
bowl sinks

KA20SS/

Draining basket
Stainless steel



ARLINGTON

Embracing the trend for all things geometric, featuring stylish square wastes and a smooth drainer, for a bold but streamlined addition to a contemporary kitchen scheme.

- Micro-sheen™ finish
- Pre-fitted seals
- Ground edge trim
- Handed drainer design
- Large bowl design
- Square waste kit included



Tap shown: Quadrant Single Lever in chrome TQSL1CM/

25
YEAR
WARRANTY

985 x 508mm 1 bowl sink with handed drainer

AR9851L/ - Left-hand drainer
AR9851R/ - Right-hand drainer



Min. base unit: 600mm
Main bowl (L x W x D): 450 x 420 x 190mm
Waste kit: Included

985 x 508mm 1.5 bowl sink with handed drainer

AR9852L/ - Left-hand drainer
AR9852R/ - Right-hand drainer



Min. base unit: 600mm
Main bowl (L x W x D): 340 x 420 x 190mm
Second bowl (L x W x D): 160 x 350 x 130mm
Waste kit: Included

Compatible Accessories

WDUSQAD/

Square waste
adaptor:

Required when fitting a
waste disposal unit
with the sink

KA09/

Strainer bowl
Stainless steel

For use with 1.5
bowl sinks

KA20SS/

Draining basket
Stainless steel



MANHATTAN

The Manhattan combines fantastic good looks with universal appeal. A slightly larger design, this sink features a recessed drainer which prevents water spillage whilst its low profile edges provide a premium flush finished look when installed.

- Micro-sheen™ finish
- Pre-fitted seals
- Ground edge trim
- Handed drainer design
- Waste kit included



Tap shown: Cruciform in brushed TCF2BF/

25
YEAR
WARRANTY

1010 x 515mm 1 bowl sink with handed drainer

MN10101L/ - Left-hand drainer
MN10101R/ - Right-hand drainer



Min. base unit: 500mm
Main bowl (L x W x D): 400 x 420 x 190mm
Waste kit: Included

1010 x 515mm 1.5 bowl sink with handed drainer

MN10102L/ - Left-hand drainer
MN10102R/ - Right-hand drainer



Min. base unit: 600mm
Main bowl (L x W x D): 350 x 420 x 190mm
Second bowl (L x W x D): 156 x 342 x 120mm
Waste kit: Included

Compatible Accessories

KA28SS/

Strainer bowl
Stainless steel

For use with 1.5
bowl sinks

KA12SS/

Draining basket
Stainless steel



OAKLAND

A modern twist on a classic design, offering a sleek and contemporary look with a lustrous Micro-Sheen™ finish.

- Micro-sheen™ finish
- Pre-fitted seals
- Ground edge trim
- Handed drainer design
- Large bowl design
- Waste kit included



25
YEAR
WARRANTY

Tap shown: Cruciform in brushed TCF2BF/

985 x 508mm 1 bowl sink with handed drainer

OL9851L/ - Left-hand drainer
OL9851R/ - Right-hand drainer



Min. base unit: 600mm
Main bowl (L x W x D): 450 x 420 x 190mm
Waste kit: Included

985 x 508mm 1.5 bowl sink with handed drainer

OL9852L/ - Left-hand drainer
OL9852R/ - Right-hand drainer



Min. base unit: 600mm
Main bowl (L x W x D): 360 x 424 x 170mm
Second bowl (L x W x D): 156 x 342 x 120mm
Waste kit: Included

Compatible Accessories

KA28SS/
Strainer bowl
Stainless steel

For use with 1.5
bowl sinks

KA12SS/
Draining basket
Stainless steel



SEDONA

When practical design is more important than state-of-the-art styling. Featuring large welded bowls and a generous draining area, Sedona is the ultimate choice for any kitchen scheme.

- Micro-sheen™ finish
- Pre-fitted seals
- Ground edge trim
- Reversible drainer design
- Waste kit included



25
YEAR
WARRANTY

Tap shown: Aspire in chrome TAI1CM/

985 x 508mm 1 bowl sink with reversible drainer

SD9851/



Min. base unit: 600mm
Main bowl (L x W x D): 400 x 420 x 190mm
Waste kit: Included

985 x 508mm 1.5 bowl sink with reversible drainer

SD9852/



Min. base unit: 600mm
Main bowl (L x W x D): 350 x 420 x 190mm
Second bowl (L x W x D): 156 x 342 x 120mm
Waste kit: Included

Compatible Accessories

KA28SS/
Strainer bowl
Stainless steel

For use with 1.5
bowl sinks

KA12SS/
Draining basket
Stainless steel



HOUSTON

The Houston sink family features an eye-catching 'waterfall' styled drainer, which promises to create a design statement in any kitchen. Both models boast welded bowls to ensure high durability, while their generous dimensions offer excellent levels of practicality for homeowners who put their sink through its paces.

- Micro-sheen™ finish
- Pre-fitted seals
- Ground edge trim
- Reversible drainer design
- Waste kit included



25
YEAR
WARRANTY

Tap shown: Aquatrend in chrome TRE1CM/

985 x 508mm 1 bowl sink with reversible drainer

HS9851/



Min. base unit: 600mm
Main bowl (L x W x D): 400 x 420 x 190mm
Waste kit: Included

985 x 508mm 1.5 bowl sink with reversible drainer

HS9852/



Min. base unit: 600mm
Main bowl (L x W x D): 350 x 420 x 190mm
Second bowl (L x W x D): 156 x 342 x 125mm
Waste kit: Included

Compatible Accessories

KA28SS/
Strainer bowl
Stainless steel

For use with 1.5
bowl sinks

KA12SS/
Draining basket
Stainless steel





GLENDALE

Manufactured from high-grade stainless steel, the Glendale promises to be practical and hard working, with a 25 year warranty as standard. Offering the flexibility of a single bowl or 1.5 bowl option, the drainer takes on a bold linear design which is easy to clean and sits perfectly within a range of kitchen styles.

- Micro-sheen™ finish
- Pre-fitted seals
- Ground edge trim
- Reversible drainer design
- Waste kit included



25
YEAR
WARRANTY

Tap shown: Aquadisc 3 in chrome TAD3CM/

950 x 508mm 1 bowl sink with reversible drainer
GL9501/



Min. base unit: 500mm
Main bowl (L x W x D): 360 x 424 x 155mm
Waste kit: Included

950 x 508mm 1.5 bowl sink with reversible drainer
GL9502/



Min. base unit: 600mm
Main bowl (L x W x D): 360 x 424 x 155mm
Second bowl (L x W x D): 156 x 342 x 120mm
Waste kit: Included

Compatible Accessories

KA28SS/

Strainer bowl
Stainless steel

For use with 1.5
bowl sinks

KA12SS/

Draining basket
Stainless steel



MICHIGAN

Made from high-grade 18/10 stainless steel, the Michigan range includes the option of a compact sink, ideal solution for smaller kitchen spaces.

- Compact option available
- Micro-sheen™ finish
- Pre-fitted seals
- Ground edge trim
- Reversible drainer design
- Waste kit included



25
YEAR
WARRANTY

Tap shown: Aquavogue in chrome TVO1CM/

800 x 508mm 1 bowl sink with reversible drainer
MG8001/



Min. base unit: 500mm
Main bowl (L x W x D): 360 x 424 x 155mm
Waste kit: Included

950 x 508mm 1 bowl sink with reversible drainer
MG9501/



Min. base unit: 500mm
Main bowl (L x W x D): 360 x 424 x 155mm
Waste kit: Included

950 x 508mm 1.5 bowl sink with reversible drainer
MG9502/



Min. base unit: 600mm
Main bowl (L x W x D): 360 x 424 x 155mm
Second bowl (L x W x D): 151 x 300 x 120mm
Waste kit: Included





COSMO

Featuring a slim profile top plate, the Cosmo sink sits flat against a worktop providing a sleek, contemporary finished look when installed. Available in single bowl designed to fit a standard 600mm cabinet.

- Micro-sheen™ finish
- Inset installation
- Waste kit included

25
YEAR
WARRANTY



Tap shown: Conical in brushed TCOSL1BF/

600 x 515mm 1 bowl sink
CSM60/



Min. base unit: 600mm
Main bowl (L x W x D): 550 x 400 x 200mm
Waste kit: Included

BALTIMORE

Flexible in form and function, the Baltimore family includes compact, standard single bowl and 1.5 bowl variants. Utilising a stylish "sun burst" design drainer and manufactured from high grade stainless steel the Baltimore collection hosts three quality sinks which are at home in either contemporary or traditional styled kitchens.

- Compact option available
- Micro-sheen™ finish
- Pre-fitted seals
- Ground edge trim
- Reversible drainer design
- Waste kit included

25
YEAR
WARRANTY



Tap shown: Aquaflow in chrome TAF1CM/

800 x 508mm 1 bowl sink with reversible drainer
BL8001/



Min. base unit: 450mm
Main bowl (L x W x D): 340 x 424 x 150mm
Waste kit: Included

950 x 508mm 1 bowl sink with reversible drainer
BL9501/



Min. base unit: 600mm
Main bowl (L x W x D): 420 x 400 x 160mm
Waste kit: Included

950 x 508mm 1.5 bowl sink with reversible drainer
BL9502/



Min. base unit: 600mm
Main bowl (L x W x D): 340 x 410 x 160mm
Second bowl (L x W x D): 175 x 320 x 80mm
Waste kit: Included





KUBE UNDERMOUNTS

With a dramatic 10mm radii defining the corners of this bowl type, the Kube undermount creates a geometric effect which will sit perfectly within streamlined cabinetry. Featuring a modern square waste and overflow, this range is available in a mix of single, 1.5 and double bowl configurations.

- Micro-sheen™ finish
- 10mm radius corners
- Waste kit included
- Hygienic overflow design



Tap shown: Quadrant Contemporary in brushed TQC1BF/

210 x 430mm 1 bowl sink
KUB18/



Min. base unit: 300mm
Main bowl (L x W x D): 180 x 400 x 140mm
Waste kit: Included

530 x 430mm 1 bowl sink
KUB50/



Min. base unit: 600mm
Main bowl (L x W x D): 500 x 400 x 200mm
Waste kit: Included

740 x 430mm 1.5 bowl handed sink
KUB5018L/ left hand
KUB5018R/ right-hand



Min. base unit: 800mm
Main bowl (L x W x D): 500 x 400 x 200mm
Second bowl (L x W x D): 180 x 400 x 140mm
Waste kit: Included

SPECTRA

Create a striking sink area with Spectra, a new metallic PVD stainless steel collection which is available in three sumptuous shades designed to add dimension and glamour with any contemporary kitchen scheme. A PVD waste kit with coordinating coloured waste cover is included as standard.

- PVD metallic finish
- Inset or undermount installation
- Waste kit and waste cover included

*Available finishes:

GR

Graphite

GL

Gold

CP

Copper



Tap shown: Intense in graphite TID1GR/

370 x 430mm 1 bowl sink
KUB34/



Min. base unit: 400mm
Main bowl (L x W x D): 340 x 400 x 200mm
Waste kit: Included

730 x 430mm 1 bowl sink
KUB70/



Min. base unit: 800mm
Main bowl (L x W x D): 700 x 400 x 200mm
Waste kit: Included

860 x 430mm 2 bowl sink
KUB4040/



Min. base unit: 900mm
Main bowl (L x W x D): 400 x 400 x 190mm
Second bowl (L x W x D): 400 x 400 x 190mm
Waste kit: Included

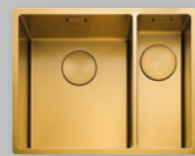
540 x 440mm 1 bowl sink
SPE50__/



NEW

Min. base unit: 600mm
Main bowl (L x W x D): 500 x 400 x 200mm
Waste kit: Included

555 x 440mm 1.5 bowl sink
SPE3416L__/ left hand
SPE3416R__/ right hand



NEW

Min. base unit: 600mm
Main bowl (L x W x D): 340 x 400 x 200mm
Second bowl (L x W x D): 160 x 400 x 140mm
Waste kit: Included



Graphite



Copper



Gold

430 x 430mm 1 bowl sink
KUB40/



Min. Base unit: 500mm
Main bowl (L x W x D): 400 x 400 x 200mm
Waste kit: Included

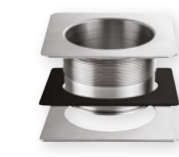
580 x 430mm 1.5 bowl handed sink
KUB3418L/ left hand
KUB3418R/ right hand



Min. Base unit: 600mm
Main bowl (L x W x D): 340 x 400 x 190mm
Second bowl (L x W x D): 180 x 400 x 140mm
Waste kit: Included

Compatible Accessories
WDUSQAD/

Square waste adaptor:
required when fitting a waste
disposal unit with sink



QUAD UNDERMOUNTS

Made from high grade stainless steel with subtle 25mm radius corners the Quad undermount sinks also feature a modern square waste design, which perfectly complements a contemporary styled kitchen scheme.

- Micro-sheen™ finish
- 25mm radius corners
- Square waste kit included
- Hygienic overflow design



Tap shown: Quadrant Contemporary in brushed TQC1BF/

CLASSIC UNDERMOUNTS

The Classic undermounts have an elegant curvature to the bowls, creating a discreet sink solution suited to any kitchen scheme. Flexibility is at the forefront of Rangemaster's undermount sinks, with the option of combining different bowl sizes to suit with the choice of handed and reversible options.

- Micro-sheen™ finish
- 65mm radius corners
- Waste kit included



200 x 340mm 1 bowl sink
QUB16/



Min. base unit: 300mm
Main bowl (L x W x D): 160 x 300 x 115mm
Waste kit: Included

530 x 450mm 1 bowl sink
QUB48/



Min. base unit: 600mm
Main bowl (L x W x D): 480 x 400 x 195mm
Waste kit: Included

390 x 450mm 1 bowl sink
QUB34/



Min. base unit: 400mm
Main bowl (L x W x D): 340 x 400 x 185mm
Waste kit: Included

185 x 370mm 1 bowl sink
UB15/



Min. base unit: 300mm
Main bowl (L x W x D): 156 x 342 x 120mm
Waste kit: Included

490 x 460mm 1 bowl sink
UB45/



Min. base unit: 600mm
Main bowl (L x W x D): 450 x 420 x 190mm
Waste kit: Included

671 x 460mm 1.5 bowl handed sink
UB4015L/ left hand
UB4015R/ right-hand



Min. base unit: 800mm
Main bowl (L x W x D): 420 x 400 x 190mm
Second bowl (L x W x D): 156 x 342 x 120mm
Waste kit: Included

600 x 450mm 1.5 bowl handed sink
QUB3418L/ left hand
QUB3418R/ right hand



Min. base unit: 600mm
Main bowl (L x W x D): 340 x 400 x 180mm
Second bowl (L x W x D): 180 x 400 x 120mm
Waste kit: Included

580 x 450mm 1.3 bowl handed sink
QUB3416L/ left hand
QUB3416R/ right hand



Min. base unit: 600mm
Main bowl (L x W x D): 340 x 400 x 185mm
Second bowl (L x W x D): 160 x 300 x 115mm
Waste kit: Included

760 x 450mm 2 bowl sink
QUB3434/



Min. base unit: 800mm
Main bowl (L x W x D): 340 x 400 x 185mm
Second bowl (L x W x D): 340 x 400 x 185mm
Waste kit: Included

378 x 448mm 1 bowl sink
UB35/



Min. base unit: 400mm
Main bowl (L x W x D): 350 x 420 x 190mm
Waste kit: Included

597 x 472mm 1.5 bowl reversible sink
UB3515/



Min. base unit: 600mm
Main bowl (L x W x D): 350 x 420 x 190mm
Second bowl (L x W x D): 156 x 342 x 120mm
Waste kit: Included

787 x 472mm 2 bowl sink
UB3535/

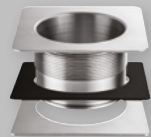


Min. base unit: 800mm
Main bowl (L x W x D): 350 x 420 x 190mm
Second bowl (L x W x D): 350 x 420 x 190mm
Waste kit: Included

Compatible Accessories

WDUSQAD/

Square waste adaptor:
required when fitting a waste
disposal unit with sink



460 x 440mm 1 bowl sink
UB40/



Min. base unit: 500mm
Main bowl (L x W x D): 420 x 400 x 190mm
Waste kit: Included

597 x 472mm 1.5 bowl handed sink
UB3515L/ left hand
UB3515R/ right hand



Min. base unit: 600mm
Main bowl (L x W x D): 350 x 420 x 190mm
Second bowl (L x W x D): 156 x 342 x 120mm
Waste kit: Included

945 x 460mm 2 bowl sink
UB4040/



Min. base unit: 1000mm
Main bowl (L x W x D): 420 x 400 x 190mm
Second bowl (L x W x D): 420 x 400 x 190mm
Waste kit: Included

The Bold, Contemporary & Robust Choice

Choose a granite sink for a contemporary, sleek finished look. There are an array of different designs to choose from in a variety of different colours.

IGNEOUS GRANITE



Constructed from a patented formula of 80% quartz - the toughest element of granite - and high-grade acrylic, the Igneous sink collection is literally rock solid. Its natural anti-bacterial surface repels microbes and stains which means cleaning is a dream.

KEY FEATURES



DURABLE MATERIAL

Resistant against knocks, scratches, stains and heat.



HYGIENIC SURFACE

Non-porous surface which repels microbes and stains making the sink much easier to clean.



UV STABILITY

Fade free colour finish for years to come.



25 YEAR WARRANTY

WIDE RANGE OF COLOURS AVAILABLE

Choose from Stone, Crystal White, Dove Grey & Ash Black



GRANITE SINKS



AMETHYST

The modern classic lines of this elegant trio will look equally at home in a contemporary or traditional kitchen. If space is restricted, a compact version is also available within the range.

- Igneous granite
- Reversible drainer
- Compact option
- Waste kit included

*Available finishes:



Tap shown: Aquatrend in chrome TRE1CM/

860 x 500mm 1 bowl sink with reversible drainer
AME860__/_/



Min. base unit: 450mm
Main bowl (L x W x D): 348 x 422 x 204mm
Waste kit: Included

1000 x 500mm 1 bowl sink with reversible drainer
AME1051__/_/



Min. base unit: 600mm
Main bowl (L x W x D): 482 x 422 x 220mm
Waste kit: Included

1000 x 500mm 1.5 bowl sink with reversible drainer
AME1052__/_/



Min. base unit: 600mm
Main bowl (L x W x D): 341 x 422 x 204mm
Second bowl (L x W x D): 161 x 301 x 148mm
Waste kit: Included

MAYON

Featuring sharp geometric bowls and a smooth drainer design, the Mayon range also features a sleek chrome branded overflow cover adding a premium finish to the overall sink design. The Mayon range is composed of 3 options; single bowl in standard and ultra compact sizes and a 1.5 bowl option.

- Igneous granite
- Reversible drainer
- Branded overflow cover
- Ultra compact option
- Waste kit included

*Available finishes:



Tap shown: Quadrant Single Lever in chrome TQSL1CM/

SCORIA

Sleek, sophisticated styling with a tough, resistant composition; the Scorias crisp, minimalist lines make this a popular choice for the modern kitchen.

- Igneous granite
- Reversible drainer
- Waste kit included

*Available finishes:



Tap shown: Salorno in chrome TSN1CM/

690 x 510mm 1 bowl sink with reversible drainer
MAY690__/_/



Min. Base Unit: 450mm
Main Bowl (L x W x D): 365 x 448 x 195mm
Waste kit: Included

1000 x 510mm 1 bowl sink with reversible drainer
MAY1051__/_/



Min. Base Unit: 600mm
Main Bowl (L x W x D): 500 x 446 x 195mm
Waste kit: Included

1000 x 510mm 1.5 bowl sink with reversible drainer
MAY1052__/_/



Min. Base Unit: 600mm
Main Bowl (L x W x D): 334 x 446 x 195mm
Second Bowl (L x W x D): 167 x 296 x 120mm
Waste kit: Included

1000 x 500mm 1 bowl sink with reversible drainer
SCO1051__/_/



Min. Base Unit: 600mm
Main Bowl (L x W x D): 480 x 440 x 200mm
Waste kit: Included

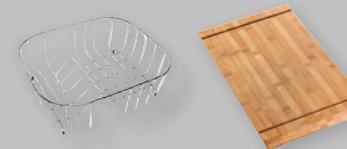
1000 x 500mm 1.5 bowl sink with reversible drainer
SCO1052__/_/



Min. Base Unit: 600mm
Main Bowl (L x W x D): 345 x 440 x 200mm
Second Bowl (L x W x D): 155 x 295 x 146mm
Waste kit: Included

Compatible Accessories

KA12SS/ KA10/
Draining basket Chopping board
Stainless steel Bamboo





ELEMENTS

Elements combines style with functionality; its recessed drainer ensures water spillage is kept to a minimum, while its large square look bowls add contemporary design to your kitchen style.

- Igneous granite material
- Reversible drainer
- Waste kit included

*Available finishes:



25
YEAR
WARRANTY

RANGEMASTER
IGNEOUS

Tap shown: Aquaquad in brushed TAQ2BF/

1000 x 500mm 1 bowl sink with reversible drainer
ELE1051__/_/



Min. base unit: 600mm
Main bowl (L x W x D): 480 x 420 x 180mm
Waste kit: Included

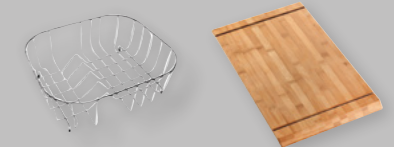
1000 x 500mm 1.5 bowl sink with reversible drainer
ELE1052__/_/



Min. base unit: 600mm
Main bowl (L x W x D): 380 x 420 x 180mm
Second bowl (L x W x D): 125 x 282 x 120mm
Waste kit: Included

Compatible Accessories

KA12SS/ Draining basket
Stainless steel
KA10/ Chopping board
Bamboo



MICA

Featuring a unique bowl design and a drainer with defined straight lines, Mica effortlessly blends contemporary style with practical design. Made from Igneous granite, the Mica range is available in 3 options; single bowl in standard and compact sizes and a 1.5 bowl option.

- Igneous granite
- Reversible drainer
- Compact option
- Waste kit included

*Available finishes:



25
YEAR
WARRANTY

RANGEMASTER
IGNEOUS

Tap shown: Aquatrend Single Lever in chrome TRE1SLCM/

860 x 500mm 1 bowl sink with reversible drainer
MIC860__/_/



Min. Base Unit: 500mm
Main Bowl (L x W x D): 415 x 446 x 195mm
Waste kit: Included

1000 x 500mm 1 bowl sink with reversible drainer
MIC1051__/_/



Min. Base Unit: 600mm
Main Bowl (L x W x D): 484 x 443 x 195mm
Waste kit: Included

1000 x 500mm 1.5 bowl sink with reversible drainer
MIC1052__/_/



Min. Base Unit: 600mm
Main Bowl (L x W x D): 335 x 443 x 195mm
Second Bowl (L x W x D): 151 x 336 x 120mm
Waste kit: Included





PARAGON

Boasting a modern geometric design, our Paragon sink is the ideal match for composite work surfaces and fits neatly within standard cabinetry.

- Igneous granite material
- Undermount installation
- Waste kit included



25
YEAR
WARRANTY

RANGEMASTER
IGNEOUS

*Available finishes:



Ash Black Crystal White Grey
Above colour finishes available with PAR4553___/ & PAR3641___/ sinks only



Ash Black Crystal white Dove grey Stone
Above colour finishes available with PAR3115___/ sink only

533 x 457mm 1 bowl sink
PAR4553___/



Min. base unit: 600mm
Main bowl (L x W x D): 469 x 393 x 209mm
Waste kit: Included
*Sink can also be installed as inset

824 x 481mm 2 bowl sink
PAR3641___/



Min. base unit: 900mm
Main bowl (L x W x D): 362 x 395 x 241mm
Second bowl: (L x W x D): 362 x 395 x 241mm
Waste kit: Included

550 x 430mm 1.5 bowl sink*
PAR3115___/



Min. base unit: 600mm
Main bowl (L x W x D): 310 x 370 x 200mm
Second bowl (L x W x D): 152 x 370 x 130mm
Waste kit: Included
* Sink can also be installed as inset

ANDESITE

Andesite encompasses a simple yet sleek drainer pattern alongside large geometric bowls, which offer a contemporary look that is at home in a range of modern kitchens. Attractive circular wastes and overflows, bold contemporary lines and low radius corners culminate into a stunning design for the trend conscious home.

- Igneous granite
- Reversible drainer
- Waste kit included



25
YEAR
WARRANTY

RANGEMASTER
IGNEOUS

*Available finishes:



Ash Black Crystal White Stone

Tap shown: Quadrant Contemporary in chrome TQC1CM/

1000 x 500mm 1 bowl sink with reversible drainer
AND1051___/



Min. base unit: 600mm
Main bowl (L x W x D): 480 x 430 x 200mm
Waste kit: Included

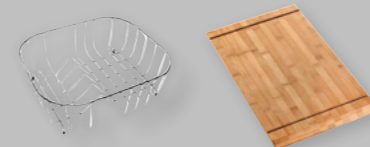
1000 x 500mm 1.5 bowl sink with reversible drainer
AND1052___/



Min. base unit: 600mm
Main bowl (L x W x D): 345 x 430 x 200mm
Second bowl (L x W x D): 155 x 340 x 146mm
Waste kit: Included

Compatible Accessories

KA12SS/ KA10/
Draining basket Chopping board
Stainless steel Bamboo





The Classic 'Statement Piece' Choice

The kitchen sink is one of the most used items of your kitchen so why not add a statement piece to enhance the overall look of your space.

With the addition of a fire-clay ceramic sink you are guaranteed a sink which will retain its high gloss colour and shine for its lifetime.

Our ceramic sinks are manufactured using clay sourced from Cornwall, UK. Moulded and fired at high temperatures, our ceramic sinks are robust and hygienic thanks to the high-gloss glaze finish with each sink.

There are a choice of inset, undermount and sit-on Belfast options available in a variety of different styles. Thanks to its natural high-gloss finish, a fire-clay ceramic sink beautifully complements any style work surface.

If you are seeking a classic design with a contemporary twist then check out our new Grange Belfast sink in a new matt black finish – this is sure to make a bold statement in any kitchen.

KEY FEATURES

EASY CLEAN SURFACE

Thanks to its smooth glazed surface, a Rangemaster fire-clay ceramic sink is easy to clean as microbes and stains just simply wipe away.

SUPERIOR STRENGTH

Thanks to the high gloss glazed finish, Rangemaster ceramic sinks are highly resistant against heat, stains and scratches.

EXPANDED COLOUR RANGE

Introducing the new matt black finish now available in the Grange Belfast range.

FIRE-CLAY SINKS



RUSTIC

Rustic catches the morning light – and the eye. Offering a modern farmhouse feel, these sinks are beautifully easy to clean and fully cater for the needs of the enthusiastic chef.

- Fire-clay ceramic
- Reversible drainer
- Waste kit included
- Plumbing kit included



10
YEAR
WARRANTY

Tap shown: Aquaclassic 2 in chrome with white handles TAC2CM/WH

1000 x 500mm 1 bowl sink with reversible drainer
CRT10101WH/



Min. base unit: 600mm
Main bowl (L x W x D): 460 x 390 x 195mm
Waste kit: Included

1000 x 500mm 1.5 bowl sink with reversible drainer
CRT10202WH/

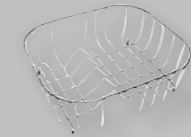


Min. base unit: 600mm
Main bowl (L x W x D): 360 x 390 x 195mm
Second bowl (L x W x D): 147 x 260 x 120mm
Waste kit: Included

Compatible Accessories

KA12SS/

Draining basket
Stainless steel



AUSTELL

Paying homage to where its core raw material is sourced, Cornwall UK. Austell is a robust, hard-wearing choice thanks to its inherent strength. This design features a modern recessed drainer design with bold straight lines and generous sized bowls, which are ideal for washing large pots and pans.

- Fire-clay ceramic
- Reversible drainer
- Waste kit included
- Plumbing kit included



10
YEAR
WARRANTY

Tap shown: Aspire in chrome TA11CM/

1000 x 500mm 1 bowl sink with reversible drainer
CAU10101WH/



Min. base unit: 600mm
Main bowl (L x W x D): 449 x 415 x 190mm
Waste kit: Included

1000 x 500mm 1.5 bowl sink with reversible drainer
CAU10102WH/



Min. base unit: 600mm
Main bowl (L x W x D): 340 x 415 x 190mm
Second bowl (L x W x D): 170 x 300 x 142mm
Waste kit: Included

Compatible Accessories

KA12SS/

Draining basket
Stainless steel



PORTLAND

Designed to sit elegantly within a variety of kitchen schemes, the charming Portland fire-clay ceramic sink bears a smooth, high gloss finish, being both easy to clean and extremely durable. A choice of single bowl or 1.5 bowl variants offers flexibility to suit your everyday use.

- Fire-clay ceramic
- Reversible drainer
- Note: waste kits are sold separately



10
YEAR
WARRANTY

Tap shown: Aquatrend in chrome TRE1CM/

1010 x 510mm 1 bowl sink with reversible drainer
CPL10101WH/



Min. base unit: 600mm
Main bowl (L x W x D): 460 x 400 x 195mm
Waste kit: Sold separately, please order WKIT15/

1010 x 510mm 1.5 bowl sink with reversible drainer
CPL10102WH/



Min. base unit: 600mm
Main bowl (L x W x D): 350 x 410 x 195mm
Second bowl (L x W x D): 135 x 257 x 125mm
Waste kit: Sold separately, please order WKIT24/

Compatible Accessories

KA12SS/

Strainer basket
Stainless steel

WKIT15/

Waste kit for
1 bowl sinks

WKIT22/

Waste kit for 1.5
bowl sinks





HARTLAND

Thanks to its inset installation method, you can achieve a Belfast look sink with any worktop material type with Hartland. Its deep apron front profile adds a design statement in any contemporary or traditional style of kitchen.

- Fire-clay ceramic
- Inset installation
- Compatible with all worktop types
- Waste & plumbing kit included



10
YEAR
WARRANTY

622 x 494mm 1 bowl sink apron front Belfast sink
CHA622WH/



Min. base unit: 600mm
Main bowl (L x W x D): 540 x 401 x 186mm
Overall height: 170mm (apron front)
Waste kit: Included

TENBY

Classically designed, the Tenby collection is available in single and 1.5 bowl options. The compact 850 x 500mm variant fits smaller 500mm cabinet sizes - ideal for smaller kitchen spaces.

- Compact option available
- Fire-clay ceramic
- Reversible drainer
- Waste & plumbing kit included



10
YEAR
WARRANTY

Tap shown: Aquaclassic 2 in chrome with white handles TAC2CM/WH

850 x 500mm 1 bowl sink with reversible drainer
CTE8501WH/



Min. base unit: 500mm
Main bowl (L x W x D): 340 x 370 x 200mm
Waste kit: Included

997 x 497mm 1.5 bowl sink with reversible drainer
CTE10102WH/



Min. base unit: 600mm
Main bowl (L x W x D): 330 x 370 x 215mm
Second bowl (L x W x D): 135 x 253 x 128mm
Waste kit: Included

Compatible Accessories
KA12SS/
Draining basket
Stainless steel





DOUBLE BOWL FARMHOUSE BELFAST

The ultimate statement piece in your kitchen with the addition of a beautiful double-bowl Farmhouse Belfast sink. Manufactured from high-grade fire-clay ceramic featuring ultra smooth surfaces throughout, this sink exudes luxury living at its best.

- Fire-clay ceramic
- Double bowls - ideal for washing large pots and pans
- Overflow included
- Waste kit included



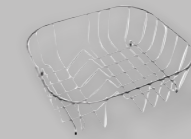
10
YEAR
WARRANTY

793 x 491mm 2 bowl sit-on Belfast sink
CFBL800WH/



Min. Base unit: 800mm
Main bowl (L x W x D): 366 x 450 x 195mm
Second bowl (L x W x D): 366 x 450 x 195mm
Overall height: 220mm
Waste kit: Included

Compatible Accessories
KA12SS/
Draining basket
Stainless steel



900MM DOUBLE FARMHOUSE BELFAST

Our popular Farmhouse sink collection has been extended to include a new 900mm double bowl sink in a contemporary design with slim profile walls and two overflows.

- Fire-clay ceramic
- Double bowls - ideal for washing large pots and pans
- Overflow per bowl
- Waste kit included



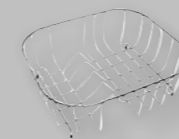
10
YEAR
WARRANTY

895 x 460mm 2 bowl sit-on Belfast sink - White
CFBL900WH/



Min. base unit: 900mm
Main bowl (L x W x D): 417 x 420 x 194mm
Second bowl (L x W x D): 417 x 420 x 194mm
Overall height: 220mm
Waste kit: Included

Compatible Accessories
KA12SS/
Draining basket
Stainless steel



FARMHOUSE BELFAST

Created to seamlessly blend modern living with a traditional country kitchen, the Farmhouse Belfast is a stylish alternative to a classic design, and now available in a brand new anthracite grey finish.

- Fire-clay ceramic
- New anthracite grey finish
- Weir style overflow
- Reversible
- Waste kit included



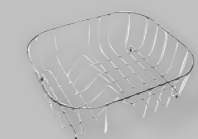
10
YEAR
WARRANTY

595 x 455mm 1 bowl sit-on Belfast sink - White
CFBL595WH/



Min. base unit: 600mm
Main bowl (L x W x D): 535 x 395 x 222mm
Overall height: 252mm
Waste kit: Included

Compatible Accessories
KA12SS/
Strainer basket
Stainless steel





CLASSIC BELFAST

There's very little that captures the true essence of a traditional British kitchen quite like a Belfast sink. Sometimes referred to as a Butler sink, the large solid design typifies the very heart of the home. Available in single bowl and double bowl options.

- Fire-clay ceramic
- Note: Waste kits are sold separately



595 x 455mm 1 bowl sit-on Belfast sink
CCBL595WH/



Min. base unit: 600mm
Main bowl (L x W x D): 525 x 385 x 215mm
Overall height: 250mm
Waste kit: Sold separately, please order WKIT13/

800 x 500mm 2 bowl sit on Belfast sink
CDB800WH/



Min. base unit: 800mm
Main bowl (L x W x D): 365 x 450 x 200mm
Second bowl (L x W x D): 365 x 450 x 200mm
Overall height: 220mm
Waste kit: Sold separately, please order WKIT24/

Compatible Accessories

KA12SS/
Draining basket
Stainless steel

WKIT13/
Waste kit for
1 bowl sinks

WKIT24/
Waste kit for
double bowl sinks



GRANGE

The Grange Belfast features slim profile walls with sharper radius corners - offering a contemporary sit-on Belfast option which benefits from a slightly larger bowl.

- Fire-clay ceramic
- Weir style overflow
- Reversible
- Waste & plumbing kit included



BELFAST

Choose the Belfast for a contemporary finished look; featuring a grid overflow instead of a traditional weir design, the Belfast also features a large bowl offering ample space to wash large pots and pans.

- Fire-clay ceramic
- Note: Waste kits are sold separately



595 x 455mm 1 bowl sit-on Belfast sink - White
CGR595WH/



Min. base unit: 600mm
Main bowl (L x W x D): 555 x 415 x 227mm
Overall height: 250mm
Waste kit: Included

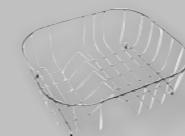
595 x 455mm 1 bowl sit-on Belfast sink - Matt Black
CGR595MB/



Min. base unit: 600mm
Main bowl (L x W x D): 555 x 415 x 227mm
Overall height: 250mm
Waste kit: Included

Compatible Accessories

KA12SS/
Draining basket
Stainless steel



595 x 475mm 1 bowl Belfast sink
CBL595WH/

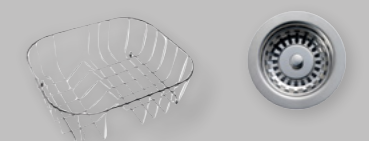


Min. base unit: 600mm
Main bowl (L x W x D): 550 x 420 x 200mm
Overall height: 220mm
Waste kit: Sold separately, please order WKIT15/

Compatible Accessories

KA12SS/
Draining basket
Stainless steel

WKIT15/
Waste kit for
1 bowl sinks





RUSTIQUE

Create a modern finished look with the addition of a Rustique fire-clay ceramic bowl. Fitted as either an inset or undermount sink, the Rustique will provide a real focal point in the kitchen and contrast excellently to all colours and finishes.

- Inset or undermount installation
- Waste kit included



595 x 460mm 1.5 bowl sink
CRUB3216WH/



Min. base unit: 600mm (Inset)
Main bowl (L x W x D): 337 x 400 x 196mm
Second bowl (L x W x D): 183 x 400 x 176mm
Waste kit: Included



600 x 522mm 1.3 bowl sink
CRUB3314WH/



Min. base unit: 600mm (Inset)
Main bowl (L x W x D): 360 x 460 x 195mm
Second bowl (L x W x D): 162 x 300 x 175mm
Waste kit: Included

557 x 430 mm 1.5 bowl sink
CRUB3315WH/



Min. base unit: 600mm
Main Bowl (L x W x D): 330 x 367 x 189mm
Second Bowl (L x W x D): 146 x 367 x 189mm
Waste kit: Included



445mm Ø 1 bowl sink
CRUB385WH/



Min. base unit: 500mm
Main bowl (L x W x D): 385mm Ø
Waste kit: Included

462 x 462mm 1 bowl sink
CRUB4040WH/



Min. base unit: 500mm (inset)
Main bowl (L x W x D): 400 x 400 x 195mm
Waste kit: Included



598 x 462mm 1 bowl sink
CRUB5340WH/



Min. base unit: 600mm (Inset)
Main bowl (L x W x D): 536 x 401 x 195mm
Waste kit: Included

234 x 460mm 1 bowl sink
CRUB1740WH/



Min. base unit: 300mm
Main bowl (L x W x D): 174x 400 x 195mm
Waste kit: Included



KITCHEN TAPS & ACCESSORIES

The Finishing

Touches

Complement your kitchen sink with a Rangemaster tap, waste disposal unit and compatible accessory. Our taps and accessories have been designed to help assist with daily tasks so that cooking and cleaning are made easier.

TAPS

All of our taps are manufactured from high-grade brass and finished with state of the art long-lasting electrolytic coatings. A ceramic disc cartridge is also included with every tap which provides smooth handle movement and ensures the user has full control over the flow and temperature of the water.

KEY FEATURES



ANTI-SPLASH SPOUT

The spout features a honeycomb aerator design which mixes air with water to emit a soft 'champagne like' water flow with no splash.



PULL-OUT HOSE

For ultimate food preparation and cleaning results choose a tap with a pull out hose, the majority of our designs feature a retractable hose which sits discreetly within the tap not altering its appearance from a standard tap.



WATER PRESSURE

The flow of water is determined from the water pressure available in your home, identifying the type of plumbing system already installed will help you choose a tap to suit your water pressure.



ALL PRESSURE

The majority of our taps have been designed to work with all plumbing systems, including low pressure hot water tanks. Look for the 'A' symbol opposite across our range which highlights compatibility with all water systems from 0.2 bar onwards.



MEDIUM PRESSURE

Some of our taps require plumbing systems with a higher bar pressure of 0.5 bar onwards, look for the 'M' symbol opposite against these types of taps.



HIGH PRESSURE

Taps with a 'H' symbol will require a plumbing system with 1.0 bar or higher when installing.

Introducing GEO Intense

Your water. Your function.
Available on demand.

Take advantage of the GEO Intense tap and all it has to offer: whether you're brewing your first cup of the day or refilling your water bottle for a day out and about - this tap delivers on demand.

- Features a dual stage safety handle with push button mechanism for ease of use for the user
- Filter cartridge included with tap
- Boiler included, which is easy to install thanks to its fast-fix, tool free connectors
- Intelligent self-diagnostic control on boiler face including filter life and replacement indicator
- Boiler also features a controllable tank temperature range from 75°C-98°C, including holiday and eco mode functions
- Choose from 4 finishes: Chrome, Brushed, Brushed Brass & Matt Black



Steaming Hot 98°C

4-IN-1 TAP



Crystal Clear Filtered



Domestic Cold



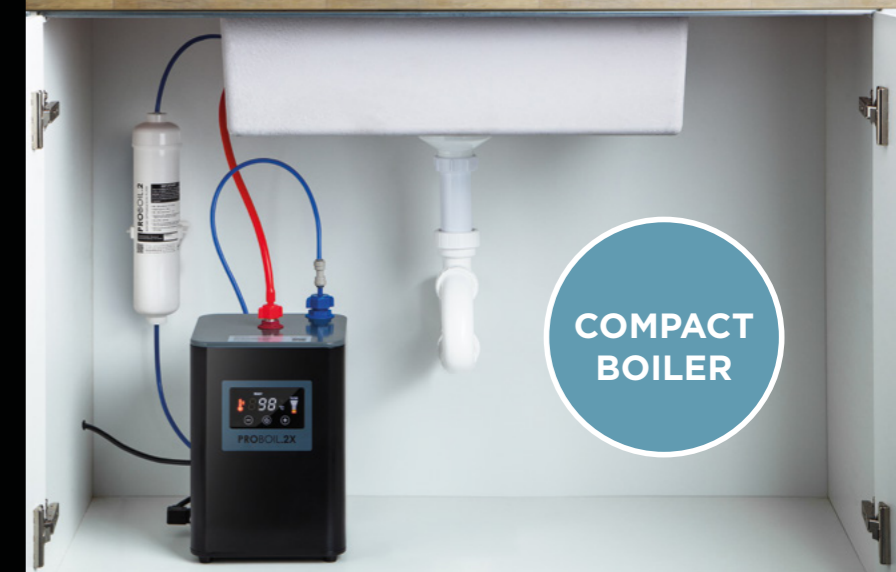
Domestic Hot



GEO Intense Tap

GEO4TIDCM/ Chrome
GEO4TIDBF/ Brushed
GEO4TIDMB/ Matt black
GEO4TIDBB/ Brushed brass

Tap height: 428mm
Spout reach: 216mm
Min. pressure: 0.5 bar



Filter Taps

Rangemaster's filter taps deliver crystal clear, clean water thanks to the high quality carbon filter included, which reduces impurities and delivers fresh tasting water at the push of a handle. Reduce your plastic usage by investing in a filtered tap at home, each filter cartridge will deliver 2,500 litres of water and can be easily replaced when needed.



Pull Out Taps

5 YEAR WARRANTY

Choose a kitchen tap with pull out function for ultimate food preparation and cleaning results. Thanks to its extendable hose, larger pots and pans which cannot fit easily in standard sinks can be cleaned easily. The majority of our designs feature a retractable hose which sits discreetly within the tap not altering its appearance from a standard tap.



Pro Spray

Featuring an open coil design and single lever handle with jet and spray self cancelling sprayhead.

TPR1CM/ Chrome

Tap height: 535mm
Spout reach: 184mm
Hose length: 246mm
Min. pressure: 1.5 bar

Aquatrend Spring

Sitting tall and proud, the Aquatrend Spring creates a bold statement piece in your kitchen.

TRE1SPRCM/ Chrome

Tap height: 528mm
Spout reach: 188mm
Hose length: 342mm
Min. pressure: 0.5 bar

Aquadisc 5 Pull Out

Featuring a modern quad neck design, the Aquadisc 5 subtly hides its additional pull-out function within the spout design.

TAD5POCM/ Chrome

Tap height: 275mm
Spout reach: 218mm
Hose length: 392mm
Min. pressure: 0.75 bar



Aquaclassic Filter Tap

A classic design featuring white handles, the perfect addition to a traditional styled kitchen.

TSA4CM/ Chrome

Tap height: 392mm
Spout reach: 216mm
Min. pressure: 0.2 bar



Cruciform Filter Tap

A modern alternative with its sweeping swan neck and contemporary handle design.

TSA5CM/ Chrome
TSA5BF/ Brushed

Tap height: 392mm
Spout reach: 216mm
Min. pressure: 0.2 bar



Aquatrend Pull Out

Featuring a unique pin handle design and dual lever control function.

TRE1POCM/ Chrome
TRE1POBF/ Brushed

Tap height: 388mm
Spout reach: 220mm
Hose length: 410mm
Min. pressure: 1.5 bar



Aquatrend Single Lever Pull Out

Featuring a unique pin handle design and single lever control function.

TRE1SLPOCM/ Chrome
TRE1SLPOBF/ Brushed

Tap height: 390mm
Spout reach: 220mm
Hose length: 410mm
Min. pressure: 1.5 bar

Single Lever Taps



Operate your tap single-handed while maintaining maximum control over the temperature and flow of the water thanks to the ceramic disc cartridge included, which has been designed to ensure a smooth handle operation is maintained when turned.



- CM
- BF
- MB



Quadrant Single Lever

Contemporary design with a modern slim spout and square base design.

TQSL1CM/ Chrome
TQSL1BF/ Brushed
TQSL1MB/ Matt Black

Tap height: 317mm
Spout reach: 219mm
Min. pressure: 0.5 bar



- CM
- BF
- MB
- BB

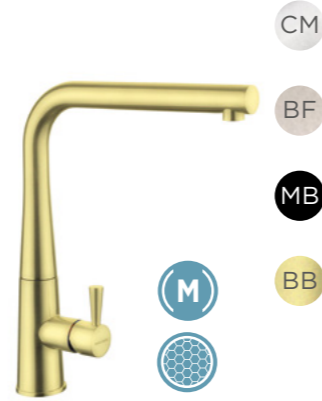


Aquatrend Single Lever

Aquatrend stands tall to create a focal point in your kitchen, now available in two new additional finishes.

TRE1SLCM/ Chrome
TRE1SLBF/ Brushed
TRE1SLMB/ Matt Black
TRE1SLBB/ Brushed Brass

Tap height: 390mm
Spout reach: 216mm
Min. pressure: 0.4 bar



- CM
- BF
- MB
- BB



Conical Single Lever

A uniquely shaped body paired with a square spout design which creates an ultimate modern design piece.

TCOSL1CM/ Chrome
TCOSL1BF/ Brushed
TCOSL1MB/ Matt Black
TCOSL1BB/ Brushed Brass

Tap height: 294mm
Spout reach: 212mm
Min. pressure: 0.6 bar



Dual Lever Taps

A dual lever tap gives the user full control of the hot and cold water feeds, with an added benefit of the hot water boiler unit not activating unnecessarily when the cold water is turned, saving energy day-to-day.



- CM



Ellipse

Featuring a tall spout with overhead lever, the Ellipse range blends contemporary style with practicality.

TEP1CM/ Chrome

Tap height: 277mm
Spout reach: 185mm
Min. pressure: 0.6 bar



- CM



Aquaflow

A compact solution where space may be restricted.

TAF1CM/ Chrome

Tap height: 163mm
Spout reach: 230mm
Min. pressure: 0.2 bar



- CM



Aspire

Featuring a modern flat handle and spout design for a sleek, contemporary finished look.

TAI1CM/ Chrome

Tap height: 365mm
Spout reach: 231mm
Min. pressure: 0.4 bar



- CM
- BF
- MB



Quadrant Contemporary

Contemporary design with a modern slim spout and square base design.

TQC1CM/ Chrome
TQC1BF/ Brushed
TQC1MB/ Matt Black

Tap height: 291mm
Spout reach: 219mm
Min. pressure: 0.4 bar



- CM
- BF



Belfast Traditional

Classically designed to complement a traditional Farmhouse Belfast sink, available in two colour finishes.

TBL1CM/ Chrome
TBL1BF/ Brushed

Tap height: 368mm
Spout reach: 190mm
Min. pressure: 0.1 bar

Dual Lever Taps

5 YEAR WARRANTY

5 YEAR WARRANTY



Belfast Monobloc
The Belfast Monobloc complements Belfast style sinks perfectly thanks to its compact size and traditional styling.

TBM1CM/ Chrome
TBM1BF/ Brushed

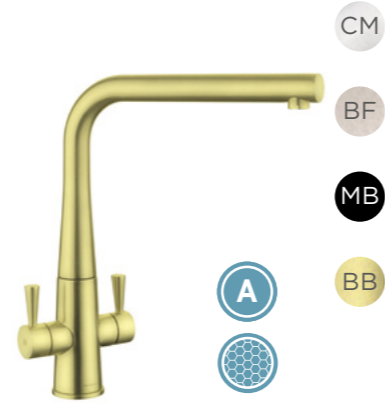
Tap height: 343mm
Spout reach: 193mm
Min. pressure: 0.3 bar



Quadrant Monobloc
Combining a sharp square edged design with a soft curved spout for a subtle, modern look.

TQM1CM/ Chrome

Tap height: 335mm
Spout reach: 200mm
Min. pressure: 0.5 bar



Conical
A uniquely shaped body paired with a square spout design which creates an ultimate modern design piece.

TCO1CM/ Chrome
TCO1BF/ Brushed
TCO1MB/ Matt Black
TCO1BB/ Brushed Brass

Tap height: 294mm
Spout reach: 212mm
Min. pressure: 0.3 bar



Aquavogue
Designed for the fashionista, Aquavogue is your style icon featuring a striking handle design and tall sweeping spout.

TVO1CM/ Chrome
TVO1BF/ Brushed

Tap height: 398mm
Spout reach: 216mm
Min. pressure: 0.3 bar



Parma
A modern, minimalist design with flair - Parma is the perfect accompaniment to any styled kitchen scheme.

TPM1CM/ Chrome
TPM1BF/ Brushed

Tap height: 389mm
Spout reach: 216mm
Min. pressure: 0.3 bar



Estuary
Classically designed featuring a curvature body and tapered handle design, available in three finishes.

TES1CM/ Chrome
TES1BF/ Brushed
TES1BC/ Brushed Copper

Tap height: 361mm
Spout reach: 194mm
Min. pressure: 0.3 bar



Traditional Belfast Bridge
The Traditional Bridge mixer offers a choice of different handle finishes to perfectly complement your Belfast sink.

TBL3CM/CM Chrome - chrome handles
TBL3CM/WH Chrome - white handles
TBL3BF/BF Brushed - brushed handles

Tap height: 355mm
Spout reach: 192mm
Min. pressure: 0.3 bar



Cruciform
An elegant design with minimalist styling and softened edges.

TCF2CM/ Chrome
TCF2BF/ Brushed

Tap height: 392mm
Spout reach: 216mm
Min. pressure: 0.3 bar



Aquatrend
A modern favourite, the Aquatrend delivers 'on-trend' styling with superb water output.

TRE1CM/ Chrome
TRE1BF/ Brushed
TRE1MB/ Matt Black
TRE1BB/ Brushed Brass

Tap height: 379mm
Spout reach: 216mm
Min. pressure: 0.3 bar



Aquaclassic 2
With the choice of multiple different handle finishes, Aquaclassic 2 can be paired with any ceramic styled sink.

TAC2CM/WH Chrome - white handles
TAC2CM/CM Chrome - chrome handles
TAC2BF/BF Brushed - brushed handles

Tap height: 359mm
Spout reach: 190mm
Min. pressure: 0.3 bar



Aquadisc 1
Minimalist design, Aquadisc features slim pin handles with a short neck.

TAD1CM/ Chrome

Tap height: 278mm
Spout reach: 193mm
Flow rate: 0.3 bar



Intense
If striking design is what you seek, the Intense tap delivers this, featuring a tall sweeping neck and available in 5 colours.

TID1CM/ Chrome
TID1BF/ Brushed
TID1BC/ Brushed Copper
TID1MB/ Matt Black
TID1GR/ Graphite

Tap height: 398mm
Spout reach: 216mm
Min. pressure: 0.5 bar

Dual Lever Taps

5 YEAR WARRANTY



Monorise

A popular favourite, Monorise features slim pin handles for a minimalist, subtle finished look.

TMR1CM/ Chrome
TMR1BF/ Brushed

Tap height: 363mm
Spout reach: 194mm
Min. pressure: 0.5 bar



Aquaquad

Modern in design with a quad style neck and tabbed handles, the Aquaquad is available in four finishes.

TAQ2CM/ Chrome
TAQ2BF/ Brushed
TAQ2MB/ Matt Black
TAQ2BB/ Brushed Brass

Tap height: 310mm
Spout reach: 192mm
Min. pressure: 0.4 bar



Aquadisc 5

Featuring easy operable handles and a straight spout design, the Aquadisc 5 is a modern favourite.

TAD5CM/ Chrome finish

Tap height: 277mm
Spout reach: 212mm
Min. pressure: 0.3 bar



Salorno

Subtly designed to suit any style of kitchen, featuring easy to use paddle handles with a low square neck design.

TSN1CM/ Chrome finish
TSN1BF/ Brushed finish

Tap height: 232mm
Spout reach: 207mm
Min. pressure: 0.4 bar



Aquavibe

A classic favourite with pin handle design and short sweeping neck.

TVB1CM/ Chrome finish
TVB1BF/ Brushed finish

Tap height: 287mm
Spout reach: 214mm
Min. pressure: 0.2 bar



Waste disposal units

Clean, hygienic and safe to use, all Rangemaster waste disposal units are easy to install and compatible with all of our sinks. With a wide choice of different options available all of which include the following features:

- **Bio Shield Antimicrobial Protection** - a hygienic agent which inhibits the growth of a wide range of micro organisms and provides protection against odours.
- **Turntable Operation** - no knives or blades are used thanks to the turntable included which uses generated centrifugal force to hurl waste against the grinding ring which shreds the waste into fine pieces.
- **Torque Master** - a balanced grinding system which provides superior torque speed with less vibration and noise providing a longer life system.
- **Sound Shell** - protected with an outer shell which reduces noise levels when the waste disposal unit is in operation.
- **Continuous Feed Function** - mains operated controlled by a switch.



Economy 500
Suitable for small households.

WDU500/
2 year guarantee

Standard 700
Suitable for small to medium households.

WDU700/
3 year guarantee

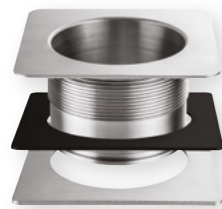
Mid Duty 750
Suitable for large households.

WDU750/
3 year guarantee

Heavy Duty 800
Suitable for large & busy households.

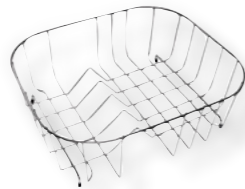
WDU800/
4 year guarantee

Sink accessories



Square Waste Adaptor
To be used with waste disposal units on Arlington, Kube & Quad sinks.

WDUSQAD/



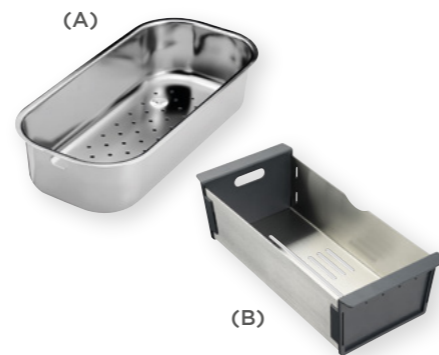
Strainer Basket
Compatible with all sinks
Stainless steel

KA12SS/



Chopping Board
Bamboo

KA10/



Strainer Bowl
Stainless Steel

KA28SS/ (A)
KA09/ (B)



	Arlington AR9851_/	Arlington AR9852_/	Baltimore BL8001/	Baltimore BL9501/	Baltimore BL9502/	Cosmo CSM60/	Glendale GL9501/	Glendale GL9502/	Houston HS9851/
Drainer Position	Handed	Handed	Reversible	Reversible	Reversible	-	Reversible	Reversible	Reversible
No. of Bowls	1	1½	1	1	1½	1	1	1½	1
Min. Base Unit (mm)	600	600	450	600	600	600	500	600	600
Overall Length (mm)	985	985	800	950	950	600	950	950	985
Overall Width (mm)	508	508	508	508	508	515	508	508	508
Cutout Size Length (mm)	965	965	780	930	930	580	930	930	965
Cutout Size Width (mm)	488	488	488	488	488	495	488	488	488
Main Bowl Length (mm)	450	340	340	420	340	550	360	360	400
Main Bowl Width (mm)	420	420	424	400	410	400	424	424	420
Main Bowl Depth (mm)	190	190	150	160	160	200	155	155	190
Second Bowl Length (mm)	-	160	-	-	175	-	-	156	-
Second Bowl Width (mm)	-	350	-	-	320	-	-	342	-
Second Bowl Depth (mm)	-	130	-	-	80	-	-	120	-
Material	18/10 SS	18/10 SS	18/10 SS	18/10 SS	18/10 SS	18/10 SS	18/10 SS	18/10 SS	18/10 SS
Gauge (mm)	0.9	0.9	0.7	0.7	0.8	1.0	0.7	0.7	0.9
Finish Drainer	Micro-Sheen	Micro-Sheen	Micro-Sheen	Micro-Sheen	Micro-Sheen	-	Micro-Sheen	Micro-Sheen	Micro-Sheen
Finish Bowl	Micro-Sheen	Micro-Sheen	Micro-Sheen	Micro-Sheen	Micro-Sheen	Micro-Sheen	Micro-Sheen	Micro-Sheen	Micro-Sheen
Waste Size Ø (mm)	1 x 90 square	2 x 90 square	1 x 89	1 x 89	2 x 89	1 X 89	1 x 89	2 x 89	1 x 89
Waste Kit	BSW	BSW	BSW	BSW	BSW	BSW	BSW	BSW	BSW
Tap Hole Size Ø (mm)	1 x 35	1 x 35	1 x 35	1 x 35	1 x 35	1 X 35	1 x 35	1 x 35	1 x 35
Min. Worktop Thickness (mm)	-	-	-	-	-	-	-	-	-
Max. Worktop Thickness (mm)	-	-	-	-	-	-	-	-	-
Guarantee (years)	25	25	25	25	25	25	25	25	25

STAINLESS STEEL INSET SINKS

Houston HS9852/	Manhattan MN10101_/	Manhattan MN10102_/	Metrix MTX9501/	Metrix MTX9502/	Michigan MG8001/	Michigan MG9501/	Michigan MG9502/	Oakland OL9851_/	Oakland OL9852_/	Rockford RK9851_/	Rockford RK9852_/
Reversible	Handed	Handed	Reversible	Reversible	Reversible	Reversible	Reversible	Handed	Handed	Handed	Handed
1½	1	1½	1	1½	1	1	1½	1	1½	1	1½
600	500	600	500	600	500	500	600	600	600	600	600
985	1010	1010	950	950	800	950	950	985	985	985	985
508	515	515	508	508	508	508	508	508	508	508	508
965	990	990	930	930	780	930	930	965	965	965	965
488	495	495	488	488	488	488	488	488	488	488	488
350	400	350	360	340	360	360	360	450	360	340	340
420	420	420	424	424	424	424	424	420	424	420	420
190	190	190	150	150	155	155	155	190	170	190	190
156	-	156	-	172	-	-	156	-	156	-	160
342	-	342	-	290	-	-	300	-	342	-	350
120	-	120	-	80	-	-	120	-	120	-	130
18/10 SS	18/10 SS	18/10 SS	18/10 SS	18/10 SS	18/10 SS	18/10 SS	18/10 SS	18/10 SS	18/10 SS	18/10 SS	18/10 SS
0.9	0.9	0.9	0.7	0.7	0.7	0.7	0.7	0.9	0.9	0.9	0.9
Micro-Sheen	Micro-Sheen	Micro-Sheen	Micro-Sheen	Micro-Sheen	Micro-Sheen	Micro-Sheen	Micro-Sheen	Micro-Sheen	Micro-Sheen	Micro-Sheen	Micro-Sheen
Micro-Sheen	Micro-Sheen	Micro-Sheen	Micro-Sheen	Micro-Sheen	Micro-Sheen	Micro-Sheen	Micro-Sheen	Micro-Sheen	Micro-Sheen	Micro-Sheen	Micro-Sheen
2 x 89	1 x 89	2 x 89	1 x 89	2 x 89	1 x 89	1 x 89	2 x 89	1 x 89	2 x 89	1 x 89	2 x 89
BSW	BSW	BSW	BSW	BSW	BSW	BSW	BSW	BSW	BSW	BSW	BSW
1 x 35	1 x 35	1 x 35	1 x 35	1 x 35	1 x 35	1 x 35	1 x 35	1 x 35	1 x 35	1 x 35	1 x 35
-	-	-	-	-	-	-	-	-	-	-	-
-	-	-	-	-	-	-	-	-	-	-	-
25	25	25	25	25	25	25	25	25	25	25	25

	Sedona SD9851/	Sedona SD9852/	Classic UB15/	Classic UB35/	Classic UB3515_/	Classic UB3535/	Classic UB40/	Classic UB45/	Classic UB4015_/
Drainer Position	Reversible	Reversible	-	-	Reversible or Handed	-	-	-	Handed
No. of Bowls	1	1½	1	1	1½	2	1	1	1½
Min. Base Unit (mm)	600	600	300	400	600	800	500	600	800
Overall Length (mm)	985	985	185	378	597	787	460	490	671
Overall Width (mm)	508	508	370	448	472	472	440	460	460
Cutout Size Length (mm)	965	965	-	-	-	-	-	-	-
Cutout Size Width (mm)	488	488	-	-	-	-	-	-	-
Main Bowl Length (mm)	400	350	156	350	350	350	420	450	420
Main Bowl Width (mm)	420	420	342	420	420	420	400	420	400
Main Bowl Depth (mm)	190	190	120	190	190	190	190	190	190
Second Bowl Length (mm)	-	156	-	-	156	350	-	-	156
Second Bowl Width (mm)	-	342	-	-	342	420	-	-	342
Second Bowl Depth (mm)	-	120	-	-	120	190	-	-	120
Material	18/10 SS	18/10 SS	18/10 SS	18/10 SS	18/10 SS	18/10 SS	18/10 SS	18/10 SS	18/10 SS
Gauge (mm)	0.9	0.9	0.8	0.8	0.9	0.9	0.9	0.9	0.9
Finish Drainer	Micro-Sheen	Micro-Sheen	-	-	-	-	-	-	-
Finish Bowl	Micro-Sheen	Micro-Sheen	Micro-Sheen	Micro-Sheen	Micro-Sheen	Micro-Sheen	Micro-Sheen	Micro-Sheen	Micro-Sheen
Waste Size Ø (mm)	1 x 89	2 x 89	1 x 89	1 x 89	2 x 89	2 x 89	1 x 89	1 x 89	2 x 89
Waste Kit	BSW	BSW	BSW	BSW	BSW	BSW	BSW	BSW	BSW
Tap Hole Size Ø (mm)	1 x 35	1 x 35	-	-	-	-	-	-	-
Min. Worktop Thickness (mm)	-	-	-	-	-	-	-	-	-
Max. Worktop Thickness (mm)	-	-	-	-	-	-	-	-	-
Guarantee (years)	25	25	25	25	25	25	25	25	25

STAINLESS STEEL UNDERMOUNT SINKS

Classic UB4040/	Kube KUB18/	Kube KUB34/	Kube KUB3418_/	Kube KUB40/	Kube KUB50/	Kube KUB70/	Kube KUB4040/	Kube KUB5018_/	Quad QUB16/	Quad QUB34/	Quad QUB3434/
-	-	-	Handed	-	-	-	-	Handed	-	-	-
2	1	1	1½	1	1	1	2	1½	1	1	2
1000	300	400	600	500	600	800	900	800	300	400	800
945	210	370	580	430	530	730	860	740	200	390	760
460	430	430	430	430	430	430	430	430	340	450	450
-	-	-	-	-	-	-	-	-	-	-	-
-	-	-	-	-	-	-	-	-	-	-	-
420	180	340	340	400	500	700	400	500	160	340	340
400	400	400	400	400	400	400	400	400	300	400	400
190	140	200	200	200	200	200	200	200	115	185	185
420	-	-	180	-	-	-	400	180	-	-	340
400	-	-	400	-	-	-	400	400	-	-	400
190	-	-	140	-	-	-	200	140	-	-	185
18/10 SS	18/10 SS	18/10 SS	18/10 SS	18/10 SS	18/10 SS	18/10 SS	18/10 SS	18/10 SS	18/10 SS	18/10 SS	18/10 SS
0.9	1.0	1.0	1.0	1.0	1.0	1.2	1.0	1.0	0.8	0.8	0.8
-	-	-	-	-	-	-	-	-	-	-	-
Micro-Sheen	Micro-Sheen	Micro-Sheen	Micro-Sheen	Micro-Sheen	Micro-Sheen	Micro-Sheen	Micro-Sheen	Micro-Sheen	Micro-Sheen	Micro-Sheen	Micro-Sheen
2 x 89	1 x 90 square	1 x 90 square	2 x 90 square	1 x 90 square	1 x 90 square	1 x 90 square	2 x 90 square	2 x 90 square	1 x 90 square	1 x 90 square	2 x 90 square
BSW	BSW	BSW	BSW	BSW	BSW	BSW	BSW	BSW	BSW	BSW	BSW
-	-	-	-	-	-	-	-	-	-	-	-
-	-	-	-	-	-	-	-	-	-	-	-
-	-	-	-	-	-	-	-	-	-	-	-
25	25	25	25	25	25	25	25	25	25	25	25

Continued on next page

	Quad QUB48/	Quad QUB3416_/	Quad QUB3418_/	Spectra SPE50_/	Spectra SPE3416_/	GRANITE INSET SINKS	Amethyst AME1051_/	Amethyst AME1052_/	Amethyst AME860_/	Andesite AND1051_/	
							Reversible	Reversible	Reversible	Reversible	
Drainer Position	-	Handed	Handed	-	Handed			1	1½	1	1
No. of Bowls	1	1½	1½	1	1½			600	600	450	600
Min. Base Unit (mm)	600	600	600	600	600			1000	1000	860	1000
Overall Length (mm)	530	580	600	540	555			500	500	500	500
Overall Width (mm)	450	450	450	440	440			980	980	840	980
Cutout Size Length (mm)	-	-	-	-	-			480	480	480	480
Cutout Size Width (mm)	-	-	-	-	-			482	341	348	480
Main Bowl Length (mm)	480	340	340	500	340			422	422	422	430
Main Bowl Width (mm)	400	400	400	400	400			220	204	204	200
Main Bowl Depth (mm)	195	185	180	200	200			-	162	-	-
Second Bowl Length (mm)	-	160	180	-	160			-	301	-	-
Second Bowl Width (mm)	-	300	400	-	400			-	148	-	-
Second Bowl Depth (mm)	-	115	120	-	140			Igneous Granite	Igneous Granite	Igneous Granite	Igneous Granite
Material	18/10 SS	18/10 SS	18/10 SS	18/10 SS	18/10 SS			-	-	-	-
Gauge (mm)	0.8	0.8	0.8	1.0	1.0			-	-	-	-
Finish Drainer	-	-	-	-	-			-	-	-	-
Finish Bowl	Micro-Sheen	Micro-Sheen	Micro-Sheen	PVD	PVD		1 x 90	2 x 90	1 x 90	1 x 90	
Waste Size Ø (mm)	1 x 90 square	2 x 90 square	2 x 90 square	1 x 89	2 x 89		BSW	BSW	BSW	BSW	
Waste Kit	BSW	BSW	BSW	BSW	BSW		-	-	-	-	
Tap Hole Size Ø (mm)	-	-	-	-	-		30	30	30	30	
Min. Worktop Thickness (mm)	-	-	-	-	-		40	40	40	40	
Max. Worktop Thickness (mm)	-	-	-	-	-		25	25	25	25	
Guarantee (years)	25	25	25	25	25						

Andesite AND1052_/	Elements ELE1051_/	Elements ELE1052_/	Mayon MAY1051_/	Mayon MAY1052_/	Mayon MAY690_/	Mica MIC1051_/	Mica MIC1052_/	Mica MIC860_/	Scoria SCO1051_/	Scoria SCO1052_/
Reversible	Reversible	Reversible	Reversible	Reversible	Reversible	Reversible	Reversible	Reversible	Reversible	Reversible
1½	1	1½	1	1½	1	1	1½	1	1	1½
600	600	600	600	600	450	600	600	500	600	600
1000	1000	1000	1000	1000	690	1000	1000	860	1000	1000
500	500	500	510	510	510	500	500	500	500	500
980	980	980	980	980	670	980	980	840	980	980
480	480	480	490	490	490	480	480	480	480	480
345	480	380	500	334	365	484	335	415	480	345
430	420	420	446	446	448	443	443	446	440	440
200	180	180	195	195	195	195	195	195	200	200
155	-	125	-	167	-	-	151	-	-	155
340	-	282	-	296	-	-	336	-	-	295
146	-	120	-	120	-	-	120	-	-	146
Igneous Granite	Igneous Granite	Igneous Granite	Igneous Granite	Igneous Granite	Igneous Granite	Igneous Granite	Igneous Granite	Igneous Granite	Igneous Granite	Igneous Granite
-	-	-	-	-	-	-	-	-	-	-
-	-	-	-	-	-	-	-	-	-	-
-	-	-	-	-	-	-	-	-	-	-
2 x 90	1 x 90	2 x 90	1 x 90	2 x 90	1 x 90	1 x 90	2 x 90	1 x 90	1 x 90	2 x 90
BSW	BSW	BSW	BSW	BSW	BSW	BSW	BSW	BSW	BSW	BSW
-	-	-	-	-	-	-	-	-	-	-
30	30	30	30	30	30	30	30	30	30	30
40	40	40	40	40	40	40	40	40	40	40
25	25	25	25	25	25	25	25	25	25	25

	Paragon PAR3115_/	Paragon PAR3641_/	Paragon PAR4553_/	GRANITE UNDERMOUNT SINKS	Austell CAU10101WH/	Austell CAU10102WH/	Portland CPL10101WH/	Portland CPL10102WH/	Rustic CRT10101WH/	FIRE-CLAY CERAMIC INSET SINKS	
					Reversible	Reversible	Reversible	Reversible	Reversible		
Drainer Position	Right Hand	-	-			1	1½	1	1½		1
No. of Bowls	1½	2	1			600	600	600	600		600
Min. Base Unit (mm)	600	900	600			1000	1000	1010	1010		1000
Overall Length (mm)	550	824	533			500	500	510	510		500
Overall Width (mm)	430	481	457			970	970	990	990		980
Cutout Size Length (mm)	490	776	488			470	470	490	490		480
Cutout Size Width (mm)	370	433	410			449	340	460	350		460
Main Bowl Length (mm)	310	362	469			415	415	400	410		390
Main Bowl Width (mm)	370	395	393			190	190	195	195		195
Main Bowl Depth (mm)	200	241	209			-	170	-	135		-
Second Bowl Length (mm)	152	362	-			-	300	-	257		-
Second Bowl Width (mm)	370	395	-			-	142	-	125		-
Second Bowl Depth (mm)	130	241	-			Fire-clay	Fire-clay	Fire-clay	Fire-clay		Fire-clay
Material	Igneous Granite	Igneous Granite	Igneous Granite			-	-	-	-		-
Gauge (mm)	-	-	-			-	-	-	-		-
Finish Drainer	-	-	-			-	-	-	-		-
Finish Bowl	-	-	-		-	-	-	-	-		
Waste Size Ø (mm)	2 x 90	2 x 92	1 x 92		1 x 90	2 x 90	1 x 89	2 x 89	1 x 89		
Waste Kit	BSW	BSW	BSW		BSW	BSW	BSW	BSW	BSW		
Tap Hole Size Ø (mm)	-	-	-		-	-	-	-	-		
Min. Worktop Thickness (mm)	-	-	-		-	-	-	-	-		
Max. Worktop Thickness (mm)	-	-	-		-	-	-	-	-		
Guarantee (years)	25	25	25		10	10	10	10	10		

Rustic CRT10202WH/	Tenby CTE8501WH/	Tenby CTE10102WH/
Reversible	Reversible	Reversible
1½	1	1½
600	500	600
1000	850	997
500	500	497
980	810	950
480	460	460
360	340	330
390	370	370
195	200	215
147	-	135
260	-	253
120	-	128
Fire-clay	Fire-clay	Fire-clay
-	-	-
-	-	-
-	-	-
1 x 90, 1 x 60	1 x 90	1 x 90, 1 x 60
BSW	BSW	BSW
-	-	-
-	-	-
-	-	-
10	10	10

Please refer to fitting instructions for recommended min/max worktop dimensions.

	Belfast CBL595WH/	Classic Belfast CCBL595WH/	Classic Belfast CDB800WH/	Farmhouse Belfast CFBL595WH/	Farmhouse Belfast CFBL800WH/	Double Belfast CFBL900WH/	Grange Belfast CGR595_/	Hartland Apron Belfast CHA622WH/	Rustique CRUB1740WH/
Drainer Position	-	-	-	-	-	-	-	-	-
No. of Bowls	1	1	2	1	2	2	1	1	1
Min. Base Unit (mm)	600	600	800	600	800	900	600	600	300
Overall Length (mm)	595	595	800	595	793	895	595	622	234
Overall Width (mm)	475	455	500	455	491	460	455	494	460
Overall Height (mm)	220	250	220	252	220	-	250	170	-
Cutout Size Length (mm)	-	-	-	-	-	-	-	-	-
Cutout Size Width (mm)	-	-	-	-	-	-	-	-	-
Main Bowl Length (mm)	550	525	365	535	366	417	555	540	174
Main Bowl Width (mm)	420	385	450	395	450	420	415	401	400
Main Bowl Depth (mm)	200	215	200	222	195	194	227	186	195
Second Bowl Length (mm)	-	-	365	-	366	417	-	-	-
Second Bowl Width (mm)	-	-	450	-	450	420	-	-	-
Second Bowl Depth (mm)	-	-	200	-	195	194	-	-	-
Material	Fire-clay	Fire-clay	Fire-clay	Fire-clay	Fire-clay	Fire-clay	Fire-clay	Fire-clay	Fire-clay
Gauge (mm)	-	-	-	-	-	-	-	-	-
Thickness of bowl sides (mm)	-	70	-	-	-	-	-	-	-
Finish Drainer	-	-	-	-	-	-	-	-	-
Finish Bowl	-	-	-	-	-	-	-	-	-
Waste Size Ø (mm)	1 x 90	1 x 65	2 x 90	1 x 60	2 x 89	2 x 90	1 x 60	1 x 89	1 x 90
Waste Kit	BSW	BSW	BSW	BSW	BSW	BSW	BSW	BSW	BSW
Tap Hole Size Ø (mm)	-	-	-	-	-	-	-	1 x 35	-
Min. Worktop Thickness (mm)	-	-	-	-	-	-	-	-	-
Max. Worktop Thickness (mm)	-	-	-	-	-	-	-	-	-
Guarantee (years)	10	10	10	10	10	10	10	10	10

FIRE-CLAY CERAMIC BELFAST AND UNDERMOUNT INSET SINKS

	Rustique CRUB3216WH/	Rustique CRUB3314WH/	Rustique CRUB3315WH/	Rustique CRUB385WH/	Rustique CRUB4040WH/	Rustique CRUB5340WH/
Right Hand	Right Hand	Right Hand	-	-	-	-
1.5	1.3	1.5	1	1	1	1
600 inset 650 u/mount	600 inset 650 u/mount	600	500	500	600 inset 650 u/mount	600 inset 650 u/mount
595	600	557	445 Ø	462	598	598
460	522	430	445 Ø	462	462	462
-	-	-	-	-	-	-
-	-	490/530	-	-	-	-
-	-	365/405	-	-	-	-
337	360	330	385 Ø	400	536	536
400	460	367	385 Ø	400	401	401
196	195	189	174	195	195	195
183	162	146	-	-	-	-
400	300	367	-	-	-	-
176	175	189	-	-	-	-
Fire-clay	Fire-clay	Fire-clay	Fire-clay	Fire-clay	Fire-clay	Fire-clay
-	-	-	-	-	-	-
-	-	-	-	-	-	-
-	-	-	-	-	-	-
-	-	-	-	-	-	-
2 x 90	2 x 90	2 x 90	1 x 89	1 x 90	1 x 91	1 x 91
BSW	BSW	BSW	BSW	BSW	BSW	BSW
-	-	-	-	-	-	-
-	-	-	-	-	-	-
-	-	-	-	-	-	-
10	10	10	10	10	10	10



NB. Rustique bowls can be installed as inset or undermount, please visit www.rangemastersinks.co.uk for cut out dimensions. Please refer to fitting instructions for recommended min/max worktop dimensions.

	Aquaclassic 2 TAC2_/	Aquadisc 1 TAD1CM/	Aquadisc 5 TAD5_/	Aquadisc 5 Pull Out TAD5POCM/	Aquaflow TAF1CM/	Aquaquad TAQ2_/	Aquatrend TRE1_/	Aquatrend TREIPO_/	Aquatrend SL TREISL_/
Min. Pressure (bar)	0.3	0.3	0.3	0.75	0.2	0.4	0.3	1.5	0.4
Max. Pressure (bar)	5.5	5.5	5.5	5.5	5.5	5.5	5.5	5.5	5.5
Overall Tap Height (mm)	359	278	277	275	163	310	379	388	390
Spout Exit Reach (mm)	190	193	212	218	230	192	216	220	216
Spout Exit Height (mm)	229	245	247	244	140	237	253	203	264
Usable Hose Length (mm)	-	-	-	392	-	-	-	410	-
Guarantee (years)	5	5	5	5	5	5	5	5	5

TAPS

	Aquatrend SL TREISLPO_/	Aquatrend Spring TREISPRCM/	Aquavibe TVB1_/	Aquavogue TVO1_/	Aspire TAI1_/	Belfast Mono TBM1_/	Belfast Trad. TBL1_/	Conical TCO1_/	Conical SL TCOSL1_/	Cruciform TCF2_/	Ellipse TEP1_/	Estuary TES1_/
1.5	0.5	0.2	0.3	0.4	0.3	0.1	0.3	0.6	0.3	0.6	0.3	
5.5	5.5	5.5	5.5	5.5	5.5	5.5	5.5	5.5	5.5	5.5	5.5	
390	528	287	398	365	343	368	294	294	392	277	361	
220	188	214	216	231	193	190	212	212	216	185	194	
205	200	247	272	230	232	260	264	264	265	210	230	
410	342	-	-	-	-	-	-	-	-	-	-	
5	5	5	5	5	5	5	5	5	5	5	5	

	Intense TID1_/	Monorise TMR1_/	Parma TPM1_/	Pro Spray TPR1CM/	Quad. Cont TQC1_/	Quad. Mono TQM1_/	Quad. SL TQSL1_/	Salorno TSN1_/	Trad. Bridge TBL3_/
Min. Pressure (bar)	0.5	0.5	0.3	1.5	0.4	0.5	0.5	0.4	0.3
Max. Pressure (bar)	5.5	5.5	5.5	5.5	5.5	5.5	5.5	5.5	5.5
Overall Tap Height (mm)	398	363	389	535	291	335	317	232	355
Spout Exit Reach (mm)	216	194	216	184	219	200	219	207	192
Spout Exit Height (mm)	273	233	263	225	271	230	297	203	243
Usable Hose Length (mm)	-	-	-	246	-	-	-	-	-
Guarantee (years)	5	5	5	5	5	5	5	5	5

FILTER TAPS	Aquaclassic TSA4_/	Cruciform TSA5_/
	0.2	0.2
	5.5	5.5
	392	392
	216	216
265	265	
5	5	

4-IN-1 TAPS	GEO Intense GEO4TID_/
	0.5
	-
	428
216	
300	
5	

Copyright AGA Rangemaster Ltd 2022.
Registered in England & Wales under registered number 3872754.
Registered office: Meadow Lane, Long Eaton, Nottingham, NG10 2GD.
Brand names, words and logo are registered trademarks of AGA Rangemaster Ltd.

Rangemaster continuously seeks improvements in specification, design and production of products and thus, alterations take place periodically. Whilst every effort is made to produce up-to-date literature, this brochure should not be regarded as an infallible guide to current specification, nor does it constitute an offer for the sale of any particular product.



LEISURE
sinks



Founded in 1933, we proudly manufacture our Leisure stainless steel sinks in the heart of the Midlands at our factory in Long Eaton. We use the latest machinery available to produce the best quality sinks for the UK and European markets.

Trade Enquiries

+44 (0)115 946 4000
tradesales@agarangemaster.co.uk

Meadow Lane, Long Eaton, Nottingham,
NG10 2GD, England

Consumer Enquiries

01926 457628
consumers@agarangemaster.co.uk

rangemastersinks.co.uk rangemaster.co.uk