

KITCHEN SINK & TAP COLLECTION



Featuring **NEW**
sinks and taps

CONTENTS

STAINLESS STEEL SINKS 06

Luxe	07
Thinking Sink	08
Aqualine	08
Contour	08
Nimbus	09
Axel	10
Seattle	10
Albion	11
Euroline	12
Aria	14
Eaton	15
Linear XS	16
Linear	17
Lexin	20
Compact	21
Contract	22
Single Bowls	23
Undermounts	24
Sink and Tap Packs	25

GRANITE SINKS 30

Nova	32
------	----

CERAMIC SINKS 34

Loxley	36
Primrose	37

TAPS, WASTE DISPOSAL AND ACCESSORIES 38

Taps	38
Accessories	48
Plumb Kits	48
Waste Kits	48
Waste Disposal Units	50



Join our NEW
Instagram community
[@leisure.sinks](#)

- NEW

NEW PRODUCTS

We have lots of new products to introduce, look out for the new logo across our pages.
- 0.9

MATERIAL GAUGE

with a choice of 0.6, 0.7, 0.8 & 0.9 to choose from.
- 500

MINIMUM CABINET SIZE

Sink options available to suit 450, 500, 600, 800 & 1000 cabinet widths.
- R

REVERSIBLE INSTALLATION

Sink can be fitted with a left-hand or right-hand drainer option.
- 10

10 YEAR WARRANTY

All stainless steel sinks include a 10 year warranty.
- 5

5 YEAR WARRANTY

All taps include a 5 year warranty.

CELEBRATE OUR 90TH ANNIVERSARY!



WIN A VIP DAY AT GOOD WOOD REVIVAL MEETING

CELEBRATING 90 YEARS OF MANUFACTURING

ENTER HERE!



OUR PRODUCTS

KITCHEN SINKS

Stainless steel remains a popular material choice in kitchen schemes thanks to its hard-wearing and hygienic properties.

Given the ongoing charm of industrial style and prominent features in the kitchen, **granite** sinks continue to be a popular trend. To meet this demand, Leisure are launching an attractive range, delivering flexible installation and contemporary colour options.

In addition, Leisure now offer a range of classic **ceramic** sinks with a touch of modernity. This small but broad appeal range promises to be a high-contrast design feature in any kitchen.



KITCHEN TAPS

Leisure taps are compatible with all water pressure systems types, including low pressure water tank systems.

A wide variety of designs are available to suit different project types, **now** including a variety of functionalities, materials, and finishes to suite any kitchen.



SINK AND TAP PACKS

We offer a wide range of sink and tap pack combinations, which include all parts required for installation. All sink and tap packs also include a WRAS approved tap for peace of mind.



ACCESSORIES

Enhance your sink area with a selection of sink accessories, choose from a variety of draining baskets and strainer bowls designed to complement your stainless steel sink.



WASTE KITS

Most of our sinks are supplied without waste and plumbing kits so that the installer can choose the most relevant kit dependent on the project - we offer an extensive range of basket strainer and plug wastes, all compatible with British standard pipework and compatible with our sinks.



WASTE DISPOSAL UNITS

Complete your sink with the addition of a waste disposal unit, which are compatible with most of our sinks. Our range of waste disposal units fit neatly underneath the sink to safely and hygienically dispose of household waste with the flick of a switch.



ENGINEERING EXCELLENCE SINCE 1933



NO. 1 UK MANUFACTURER

AGA Rangemaster are the largest manufacturer of kitchen sinks in the UK. With over 90 years experience and a reputation for excellence, we're able to offer a wide range of high quality sinks and taps for you to choose from.

We are experts in metal presswork and at our manufacturing site we offer full and semi automated mass production pressing which is supported with complete in-house services from CAD design to tool making.

Leisure branded sinks come in a variety of styles to complement your lifestyle perfectly and come with a 10 year guarantee.

QUALITY YOU CAN TRUST

As a responsible manufacturer and supplier of high-quality domestic sinks, all of our Leisure Sinks carry a CE & UKCA certification mark which comply with the BS EN 13310 standard.

To emphasise the importance placed on quality, a number of models in Leisure's range have been awarded the BSI Kitemark in recognition of their high specification manufacture and finish. Audited to the highest manufacturing standards, Leisure Sinks remain the only sink manufacturer to be awarded this accolade.

The majority of Leisure's kitchen taps have undergone extensive testing at an independent laboratory and are awarded with WRAS approval certification fully complying with the highest standards set out by the UK's water regulations board, meeting UK water byelaws.

In addition, all products meet the exacting criteria set out by several international standards, including ISO 14001, which signifies excellent environmental management systems, and ISO 9001, which recognises fully integrated quality management systems.



Our stainless steel sinks are proudly manufactured in the heart of the Midlands, in Long Eaton, Nottingham



ARA9502/

STAINLESS STEEL SINKS

LUXE

10
YEAR
WARRANTY



1500 x 508mm Single Bowl Inset Sink

Main Bowl Size	420 x 350 x 190mm
Material	18/10 stainless steel – 0.9 gauge
Finish	Polished
Min. Base Unit	500mm
Drainer Position	Handed
Waste Hole Size	1 x 92mm
Tap Hole Size	1 x 35mm

Sink
Waste kit

LX155/
Included

0.9

500



1500 x 508mm Double Bowl Inset Sink

Main Bowl Size	420 x 400 x 190mm
Second Bowl Size	420 x 350 x 190mm
Material	18/10 stainless steel – 0.9 gauge
Finish	Polished
Min. Base Unit	1000mm
Drainer Position	Handed
Waste Hole Size	2 x 92mm
Tap Hole Size	1 x 35mm

Sink
Sink
Waste kit

LX155L/ (Left-hand drainer)
LX155R/ (Right-hand drainer)
Included

0.9

1000



2120 x 460mm Double Bowl Inset Sink

Main Bowl Size	420 x 350 x 190mm
Second Bowl Size	420 x 350 x 190mm
Material	18/10 stainless steel – 0.9 gauge
Finish	Polished
Min. Base Unit	1000mm
Waste Hole Size	2 x 92mm
Tap Hole Size	1 x 35mm

Sink
Waste kit

LX84/
Included

0.9

1000

PROLINE



985 x 508mm 1.5 Bowl Inset Sink

Main Bowl Size	350 x 420 x 190mm
Second Bowl Size	156 x 342 x 120mm
Material	18/10 stainless steel – 0.9 gauge
Finish	Polished
Min. Base Unit	600mm
Drainer Position	Handed
Waste Hole Size	2 x 92mm
Tap Hole Size	1 x 35mm

Sink
Sink
Waste kit

PL9852L/ (Left-hand drainer)
PL9852R/ (Right-hand drainer)
Included

0.9

600

THINKING SINK

10
YEAR
WARRANTY



985 x 508mm 1.5 Bowl Inset Sink

Main Bowl Size	355 x 380 x 165mm
Second Bowl Size	156 x 300 x 125mm
Material	18/10 stainless steel – 0.9 gauge
Finish	Polished
Min. Base Unit	600mm
Drainer Position	Reversible
Waste Hole Size	2 x 92mm
Tap Hole Size	1 x 35mm

Sink
Waste kit

**TS9855/
WAST04/** (sold separately)

0.9

600

R

AQUALINE

10
YEAR
WARRANTY



985 x 508mm Single Bowl Inset Sink

Main Bowl Size	350 x 420 x 160mm
Material	18/10 stainless steel – 0.8 gauge
Finish	Polished
Min. Base Unit	500mm
Drainer Position	Reversible
Waste Hole Size	1 x 92mm
Tap Hole Size	1 x 35mm

Sink
Waste kit

**AQ9851/
WAST10/** (sold separately)

0.8

500

R



985 x 508mm 1.5 Bowl Inset Sink

Main Bowl Size	350 x 420 x 160mm
Second Bowl Size	156 x 300 x 117mm
Material	18/10 stainless steel – 0.8 gauge
Finish	Polished
Min. Base Unit	600mm
Drainer Position	Reversible
Waste Hole Size	2 x 92mm
Tap Hole Size	1 x 35mm

Sink
Waste kit

**AQ9852/
WAST04/** (sold separately)

0.8

600

R

CONTOUR



950 x 508mm Single Bowl Inset Sink

Main Bowl Size	420 x 400 x 180mm
Material	18/10 stainless steel – 0.9 gauge
Finish	Soft brushed polished
Min. Base Unit	600mm
Drainer Position	Reversible
Waste Hole Size	1 x 92mm
Tap Hole Size	1 x 35mm

Sink
Waste kit

**CN950/
WAST09/** (sold separately)

0.9

600

R



NIM1052/

NIMBUS

10
YEAR
WARRANTY



1000 x 500mm Single Bowl Inset Sink

Main Bowl Size	465 x 415 x 215mm
Material	18/10 stainless steel – 0.8 gauge
Finish	Brushed
Min. Base Unit	600mm
Drainer Position	Reversible
Waste Hole Size	1 x 92mm
Tap Hole Size	1 x 35mm

Sink
Waste kit

**NIM1051/
WAST09/** (sold separately)

0.8

600

R

1000 x 500mm 1.5 Bowl Inset Sink

Main Bowl Size	350 x 415 x 190mm
Second Bowl Size	160 x 285 x 120mm
Material	18/10 stainless steel – 0.8 gauge
Finish	Brushed
Min. Base Unit	700mm*
Drainer Position	Reversible
Waste Hole Size	2 x 92mm
Tap Hole Size	1 x 35mm

Sink
Waste kit

**NIM1052/
WAST04/** (sold separately)

0.8

700

R

* NB. slight adjustment to cabinet wall required if fitting into a 600mm cabinet.

AXEL

10
YEAR
WARRANTY



860 x 500mm Single Bowl Inset Sink

Main Bowl Size	340 x 400 x 200mm
Material	18/10 stainless steel – 0.6 gauge
Finish	Satin
Min. Base Unit	500mm
Drainer Position	Reversible
Waste Hole Size	1 x 92mm
Tap Hole Size	1 x 35mm

Sink
Waste kit

**AX860/
WAST09/** (sold separately)

0.6

500

R

SEATTLE



950 x 508mm Single Bowl Inset Sink

Main Bowl Size	360 x 424 x 155mm
Material	18/10 stainless steel – 0.7 gauge
Finish	Polished
Min. Base Unit	500mm
Drainer Position	Reversible
Waste Hole Size	1 x 92mm
Tap Hole Size	1 x 35mm

Sink
Waste kit

**SE9501POL/
WAST09/** (sold separately)

Sink and tap pack options available, see page 25.

0.7

500

R



950 x 508mm Single Bowl Inset Sink
With Shallow Bowl

Main Bowl Size	360 x 424 x 125mm
Material	18/10 stainless steel – 0.7 gauge
Finish	Polished
Min. Base Unit	500mm
Drainer Position	Reversible
Waste Hole Size	1 x 92mm
Tap Hole Size	1 x 35mm

Sink
Waste kit

**SE9501SB/
WAST09/** (sold separately)

0.7

500

R



950 x 508mm 1.5 Bowl Inset Sink

Main Bowl Size	360 x 424 x 155mm
Second Bowl Size	156 x 300 x 125mm
Material	18/10 stainless steel – 0.7 gauge
Finish	Polished
Min. Base Unit	600mm
Drainer Position	Reversible
Waste Hole Size	2 x 92mm
Tap Hole Size	1 x 35mm

Sink
Waste kit

**SE9502POL/
WAST04/** (sold separately)

0.7

600

R



SE9502POL/

ALBION

10
YEAR
WARRANTY



500 x 500mm Compact Single Bowl Inset Sink

Main Bowl Size	430 x 380 x 205mm
Material	18/10 stainless steel – 0.6 gauge
Finish	Satin
Min. Base Unit	500mm
Drainer Position	N/A
Waste Hole Size	1 x 92mm
Tap Hole Size	1 x 35mm

Sink
Waste kit

**AL500/
WAST09/** (sold separately)

0.6

500



800 x 508mm Single Bowl Inset Sink

Main Bowl Size	360 x 424 x 155mm
Material	18/10 stainless steel – 0.7 gauge
Finish	Polished
Min. Base Unit	500mm
Drainer Position	Reversible
Waste Hole Size	1 x 92mm
Tap Hole Size	1 x 35mm

Sink
Waste kit

**AL8001/
WAST09/** (sold separately)

0.7

500

R

ALBION



950 x 508mm Single Bowl Inset Sink

Main Bowl Size	360 x 424 x 155mm
Material	18/10 stainless steel – 0.7 gauge
Finish	Polished
Min. Base Unit	500mm
Drainer Position	Reversible
Waste Hole Size	1 x 92mm
Tap Hole Size	1 x 35mm

Sink
Waste kit **AL9501/**
 WAST09/ (sold separately)



950 x 508mm 1.5 Bowl Inset Sink

Main Bowl Size	360 x 424 x 155mm
Second Bowl Size	156 x 300 x 120mm
Material	18/10 stainless steel – 0.7 gauge
Finish	Polished
Min. Base Unit	600mm
Drainer Position	Reversible
Waste Hole Size	2 x 92mm
Tap Hole Size	1 x 35mm

Sink
Waste kit **AL9502/**
 WAST09/ (sold separately)

Sink and tap pack options available, see page 26.



EUROLINE



647 x 508mm Compact Single Bowl Inset Sink

Main Bowl Size	340 x 424 x 150mm
Material	18/10 stainless steel – 0.7 gauge
Finish	Polished & satin finishes available
Min. Base Unit	450mm
Drainer Position	Reversible
Waste Hole Size	1 x 92mm
Tap Hole Size	1 x 35mm

Sink
Sink
Waste kit **EL6501/POL (Polished finish)**
 EL6501/NC (Satin finish)
 WAST09/ (sold separately)



647 x 508mm Compact 1.5 Bowl Inset Sink

Main Bowl Size	376 x 351 x135mm
Second Bowl Size	156 x 300 x 125mm
Material	18/10 stainless steel – 0.7 gauge
Finish	Polished
Min. Base Unit	600mm
Drainer Position	Reversible
Waste Hole Size	2 x 92mm
Tap Hole Size	1 x 35mm

Sink
Waste kit **EL650/**
 WAST04/ (sold separately)



EUROLINE



860 x 435mm Compact Single Bowl Inset Sink

Main Bowl Size	376 x 351 x 140mm
Material	18/10 stainless steel – 0.6 gauge
Finish	Polished & satin finishes available
Min. Base Unit	450mm
Drainer Position	Reversible
Waste Hole Size	1 x 52mm
Tap Hole Size	1 x 35mm

Sink
Sink
Waste kit **EL860/POL (Polished finish)**
 EL860/NC (Satin finish)
 WKIT07/ (sold separately)



950 x 508mm Single Bowl Inset Sink

Main Bowl Size	375 x 350 x 135mm
Material	18/10 stainless steel – 0.7 gauge
Finish	Polished & satin finishes available
Min. Base Unit	450mm
Drainer Position	Reversible
Waste Hole Size	1 x 92mm
Tap Hole Size	1 x 35mm

Sink
Sink
Waste kit **EL9501/ (Polished finish)**
 EL9501/NC (Satin finish)
 WAST10/ (sold separately)

Sink and tap pack options available, see page 25.



950 x 508mm 1.5 Bowl Inset Sink

Main Bowl Size	340 x 424 x 150mm
Second Bowl Size	156 x 300 x 125mm
Material	18/10 stainless steel – 0.7 gauge
Finish	Polished & satin finishes available
Min. Base Unit	600mm
Drainer Position	Reversible
Waste Hole Size	1 x 92mm, 1 x 52mm
Tap Hole Size	1 x 35mm

Sink
Sink
Waste kit **EL9502/ (Polished finish)**
 EL9502/NC (Satin finish)
 WKIT06/ (sold separately)

Sink and tap pack options available, see page 28.



950 x 508mm 1.5 Bowl Inset Sink

Main Bowl Size	340 x 424 x 150mm
Second Bowl Size	156 x 300 x 125mm
Material	18/10 stainless steel – 0.7 gauge
Finish	Polished & satin finishes available
Min. Base Unit	600mm
Drainer Position	Reversible
Waste Hole Size	2 x 92mm
Tap Hole Size	1 x 35mm

Sink
Sink
Waste kit **EL950289/ (Polished finish)**
 EL950289NC/ (Satin finish)
 WAST04/ (sold separately)

Sink and tap pack options available, see page 26.





ARIA

10
YEAR
WARRANTY



950 x 508mm Single Bowl Inset Sink

Main Bowl Size	360 x 424 x 150mm
Material	18/10 stainless steel – 0.7 gauge
Finish	Satin bowl, bright drainer
Min. Base Unit	500mm
DRAINER POSITION	Reversible
Waste Hole Size	1 x 92mm
Tap Hole Size	1 x 35mm

Sink
Waste kit **ARA9501/**
 WAST09/ (sold separately)

Sink and tap pack options available, see page 27.



950 x 508mm 1.5 Bowl Inset Sink

Main Bowl Size	340 x 424 x 150mm
Second Bowl Size	172 x 290 x 80mm
Material	18/10 stainless steel – 0.7 gauge
Finish	Satin bowl, bright drainer
Min. Base Unit	600mm
DRAINER POSITION	Reversible
Waste Hole Size	2 x 92mm
Tap Hole Size	1 x 35mm

Sink
Waste kit **ARA9502/**
 WAST04/ (sold separately)

Sink and tap pack options available, see page 28.

0.7

500

R

0.7

600

R

EATON

10
YEAR
WARRANTY



950 x 508mm Single Bowl Inset Sink

Main Bowl Size	420 x 350 x 150mm
Material	18/10 stainless steel – 0.6 gauge
Finish	Satin bowl, bright drainer
Min. Base Unit	500mm
DRAINER POSITION	Reversible
Waste Hole Size	1 x 92mm
Tap Hole Size	1 x 35mm

Sink
Waste kit **EA9501/**
 WAST09/ (sold separately)

* NB. slight adjustment to cabinet wall required if fitting into a 600mm cabinet.

Sink and tap pack options available, see page 27.



950 x 508mm 1.5 Bowl Inset Sink

Main Bowl Size	340 x 410 x 150mm
Second Bowl Size	175 x 320 x 80mm
Material	18/10 stainless steel – 0.7 gauge
Finish	Satin bowl, bright drainer
Min. Base Unit	600mm
DRAINER POSITION	Reversible
Waste Hole Size	2 x 92mm
Tap Hole Size	1 x 35mm

Sink
Waste kit **EA9502/**
 WAST04/ (sold separately)

Sink and tap pack options available, see page 28.

0.6

500

R

0.7

600

R

LINEAR XS



950 x 508mm Single Bowl Inset Sink

Main Bowl Size	420 x 400 x 180mm
Material	18/10 stainless steel – 0.9 gauge
Finish	Satin bowl, bright drainer
Min. Base Unit	600mm
Drainer Position	Reversible
Waste Hole Size	1 x 52mm
Tap Hole Size	1 x 35mm

Sink
Waste kit **LN950XS/**
 WKIT05/ or WKIT17/ (sold separately)



950 x 508mm Single Bowl Inset Sink

Main Bowl Size	420 x 400 x 160mm
Material	18/10 stainless steel – 0.6 gauge
Finish	Satin bowl, bright drainer
Min. Base Unit	600mm
Drainer Position	Reversible
Waste Hole Size	1 x 52mm
Tap Hole Size	1 x 35mm

Sink
Waste kit **LR950XS/**
 WKIT05/ or WKIT17/ (sold separately)



950 x 508mm Single Bowl Inset Sink

Main Bowl Size	420 x 400 x 180mm
Material	18/10 stainless steel – 0.9 gauge
Finish	Polished
Min. Base Unit	600mm
Drainer Position	Reversible
Waste Hole Size	1 x 92mm
Tap Hole Size	1 x 35mm

Sink
Waste kit **LN9501XSPOL/**
 WAST09/ (sold separately)



950 x 508mm Single Bowl Inset Sink

Main Bowl Size	420 x 400 x 160mm
Material	18/10 stainless steel – 0.6 gauge
Finish	Satin bowl, bright drainer
Min. Base Unit	600mm
Drainer Position	Reversible
Waste Hole Size	1 x 92mm
Tap Hole Size	1 x 35mm

Sink
Waste kit **LR9501XS/**
 WAST09/ (sold separately)



LINEAR



800 x 508mm Compact Single Bowl Inset Sink

Main Bowl Size	340 x 424 x 150mm
Material	18/10 stainless steel – 0.7 gauge
Finish	Satin bowl, bright drainer
Min. Base Unit	450mm
Drainer Position	Reversible
Waste Hole Size	1 x 92mm
Tap Hole Size	1 x 35mm

Sink
Waste kit **LR8001/**
 WAST09/ (sold separately)



Sink and tap pack options available, see page 29.



860 x 435mm Compact Single Bowl Inset Sink

Main Bowl Size	376 x 351 x 140mm
Material	18/10 stainless steel – 0.6 gauge
Finish	Satin bowl, bright drainer
Min. Base Unit	450mm
Drainer Position	Reversible
Waste Hole Size	1 x 92mm
Tap Hole Size	1 x 35mm

Sink
Waste kit **LR860/NC**
 WAST09/ (sold separately)



950 x 508mm Single Bowl Inset Sink

Main Bowl Size	420 x 350 x 160mm
Material	18/10 stainless steel – 0.9 gauge
Finish	Satin bowl, bright drainer
Min. Base Unit	500mm
Drainer Position	Reversible
Waste Hole Size	1 x 52mm
Tap Hole Size	1 x 35mm

Sink
Waste kit **LN950/**
 WKIT05/ or WKIT17/ (sold separately)



950 x 508mm Single Bowl Inset Sink

Main Bowl Size	420 x 350 x 160mm
Material	18/10 stainless steel – 0.6 gauge
Finish	Satin bowl, bright drainer
Min. Base Unit	500mm
Drainer Position	Reversible
Waste Hole Size	1 x 52mm
Tap Hole Size	1 x 35mm

Sink
Waste kit **LR950/**
 WKIT05/ or WKIT17/ (sold separately)



Sink and tap pack options available, see page 29.



950 x 508mm Single Bowl Inset Sink

Main Bowl Size	420 x 350 x 160mm
Material	18/10 stainless steel – 0.6 gauge
Finish	Satin bowl, bright drainer
Min. Base Unit	500mm
Drainer Position	Reversible
Waste Hole Size	1 x 92mm
Tap Hole Size	1 x 35mm

Sink
Waste kit **LR9501/
WAST09/** (sold separately)

Sink and tap pack options available, see page 27.

0.6

500



950 x 508mm 1.5 Bowl Inset Sink

Main Bowl Size	340 x 410 x 160mm
Second Bowl Size	175 x 320 x 80mm
Material	18/10 stainless steel – 0.9 gauge
Finish	Satin bowl, bright drainer
Min. Base Unit	600mm
Drainer Position	Reversible
Waste Hole Size	2 x 92mm
Tap Hole Size	1 x 35mm

Sink
Waste kit **LN9502/
WAST04/** (sold separately)

0.9



600



950 x 508mm 1.5 Bowl Inset Sink

Main Bowl Size	340 x 410 x 160mm
Second Bowl Size	175 x 320 x 80mm
Material	18/10 stainless steel – 0.7 gauge
Finish	Satin bowl, bright drainer
Min. Base Unit	600mm
Drainer Position	Reversible
Waste Hole Size	2 x 92mm
Tap Hole Size	1 x 35mm

Sink
Waste kit **LR9502/
WAST04/** (sold separately)

Sink and tap pack options available, see page 28.

0.7



600



950 x 508mm 1.5 Bowl Inset Sink
With Shallow Bowl

Main Bowl Size	340 x 410 x 120mm
Second Bowl Size	175 x 320 x 80mm
Material	18/10 stainless steel – 0.7 gauge
Finish	Satin bowl, bright drainer
Min. Base Unit	600mm
Drainer Position	Reversible
Waste Hole Size	2 x 92mm
Tap Hole Size	1 x 35mm

Sink
Waste kit **LR9502SB/
WAST04/** (sold separately)

0.7

600



1160 x 508mm Single Bowl Inset Sink

Main Bowl Size	380 x 355 x 165mm
Material	18/10 stainless steel – 0.9 gauge
Finish	Satin bowl, bright drainer
Min. Base Unit	500mm
Waste Hole Size	1 x 52mm
Tap Hole Size	2 x 31mm

Sink
Waste kit **LR116052/NC
WKIT05/ or WKIT17/** (sold separately)

0.9

500



1160 x 508mm Single Bowl Inset Sink

Main Bowl Size	380 x 355 x 165mm
Material	18/10 stainless steel – 0.9 gauge
Finish	Polished
Min. Base Unit	500mm
Waste Hole Size	1 x 92mm
Tap Hole Size	1 x 35mm

Sink
Waste kit **LR11601TH/
WAST09/** (sold separately)

0.9

500



1160 x 508mm Double Bowl Inset Sink

Main Bowl Size	380 x 355 x 165mm
Second Bowl Size	380 x 355 x 165mm
Material	18/10 stainless steel – 0.9 gauge
Finish	Polished
Min. Base Unit	800mm
Drainer Position	Reversible
Waste Hole Size	2 x 92mm
Tap Hole Size	1 x 35mm

Sink
Waste kit **LR1160DB/
WAST04/** (sold separately)

0.9

800



950 x 508mm Single Bowl Inset Sink

Main Bowl Size	420 x 350 x 180mm
Material	18/10 stainless steel – 0.9 gauge
Finish	Satin bowl, bright drainer
Min. Base Unit	500mm
Drainer Position	Reversible
Waste Hole Size	1 x 52mm
Tap Hole Size	1 x 35mm

Sink
Waste kit **LN95/**
WKIT05/ or WKIT17/ (sold separately)



950 x 508mm Single Bowl Inset Sink

Main Bowl Size	420 x 350 x 160mm
Material	18/10 stainless steel – 0.6 gauge
Finish	Satin bowl, bright drainer
Min. Base Unit	500mm
Drainer Position	Reversible
Waste Hole Size	1 x 52mm
Tap Hole Size	1 x 35mm

Sink
Waste kit **LE95/**
WKIT05/ or WKIT17/ (sold separately)

Sink and tap pack options available, see page 29.



950 x 508mm Single Bowl Inset Sink
With Shallow Bowl

Main Bowl Size	420 x 350 x 120mm
Material	18/10 stainless steel – 0.6 gauge
Finish	Satin bowl, bright drainer
Min. Base Unit	500mm
Drainer Position	Handed
Waste Hole Size	1 x 52mm
Tap Hole Size	1 x 35mm

Sink
Waste kit **LE95SB/**
WKIT05/ or WKIT17/ (sold separately)



950 x 508mm Single Bowl Inset Sink

Main Bowl Size	420 x 350 x 180mm
Material	18/10 stainless steel – 0.9 gauge
Finish	Satin bowl, bright drainer
Min. Base Unit	500mm
Drainer Position	Handed
Waste Hole Size	1 x 52mm
Tap Hole Size	2 x 31mm

Sink
Sink
Waste kit **LN95L/ (Left-hand drainer)**
LN95R/ (Right-hand drainer)
WKIT05/ or WKIT17/ (sold separately)



950 x 508mm Single Bowl Inset Sink

Main Bowl Size	420 x 350 x 160mm
Material	18/10 stainless steel – 0.6 gauge
Finish	Satin bowl, bright drainer
Min. Base Unit	500mm
Drainer Position	Handed
Waste Hole Size	1 x 52mm
Tap Hole Size	2 x 31mm

Sink
Sink
Waste kit **LE95L/ (Left-hand drainer)**
LE95R/ (Right-hand drainer)
WKIT05/ or WKIT17/ (sold separately)

Sink and tap pack options available, see page 29.



950 x 508mm Single Bowl Inset Sink
With Shallow Bowl

Main Bowl Size	420 x 350 x 120mm
Material	18/10 stainless steel – 0.6 gauge
Finish	Satin bowl, bright drainer
Min. Base Unit	500mm
Drainer Position	Handed
Waste Hole Size	1 x 52mm
Tap Hole Size	2 x 31mm

Sink
Sink
Waste kit **LE95LSB/ (Left-hand drainer)**
LE95RSB/ (Right-hand drainer)
WKIT05/ or WKIT17/ (sold separately)



COMPACT



580 x 450mm Single Bowl Inset Sink

Main Bowl Size	Ø 380 x 175mm
Material	18/10 stainless steel – 0.6 gauge
Finish	Satin
Min. Base Unit	450mm
Drainer Position	Reversible
Waste Hole Size	1 x 90mm
Tap Hole Size	1 x 35mm

Sink
Waste kit **CPTRD580/**
WAST09/ (sold separately)



580 x 480mm Single Bowl Inset Sink

Main Bowl Size	355 x 405 x 185mm
Material	18/10 stainless steel – 0.6 gauge
Finish	Satin
Min. Base Unit	500mm
Drainer Position	Reversible
Waste Hole Size	1 x 90mm
Tap Hole Size	1 x 35mm

Sink
Waste kit **CPTSQ580/**
WAST09/ (sold separately)





1000 x 500mm Single Bowl Sit-On Sink
With Square Front

Main Bowl Size	420 x 350 x 160mm
Material	18/10 stainless steel – 0.6 gauge
Finish	Satin bowl, bright drainer
Min. Base Unit	1000mm
Drainer Position	Handed
Waste Hole Size	1 x 52mm
Tap Hole Size	2 x 31mm

Sink
Sink: **LC105L/ (Left-hand drainer)**
Sink: **LC105R/ (Right-hand drainer)**
Waste kit **WKIT05/ or WKIT17/** (sold separately)

0.6

1000



1000 x 600mm Single Bowl Sit-On Sink
With Square Front

Main Bowl Size	420 x 400 x 160mm
Material	18/10 stainless steel – 0.6 gauge
Finish	Satin bowl, bright drainer
Min. Base Unit	1000mm
Drainer Position	Handed
Waste Hole Size	1 x 52mm
Tap Hole Size	2 x 31mm

Sink
Sink: **LC106L/ (Left-hand drainer)**
Sink: **LC106R/ (Right-hand drainer)**
Waste kit **WKIT05/ or WKIT17/** (sold separately)

0.6

1000



1000 x 600mm Single Bowl Sit-On Sink
With Roll Front

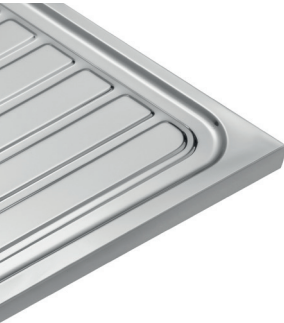
Main Bowl Size	420 x 400 x 160mm
Material	18/10 stainless steel – 0.6 gauge
Finish	Satin bowl, bright drainer
Min. Base Unit	1000mm
Drainer Position	Handed
Waste Hole Size	1 x 52mm
Tap Hole Size	2 x 31mm

Sink
Sink: **LC106L/RF (Left-hand drainer)**
Sink: **LC106R/RF (Right-hand drainer)**
Waste kit **WKIT05/ or WKIT17/** (sold separately)

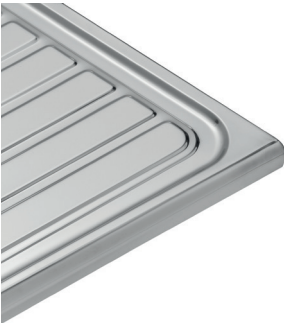
0.6

1000

With Square Front



With Roll Front



432 x 452mm Single Bowl Inset Sink

Main Bowl Size	420 x 400 x 190mm
Material	18/10 stainless steel – 0.8 gauge
Finish	Polished
Min. Base Unit	500mm
Waste Hole Size	1 x 92mm

Sink
Waste kit **BSS40/**
Included

0.8

500



508 x 419mm Single Bowl Inset Sink

Main Bowl Size	470 x 380 x 190mm
Material	18/10 stainless steel – 0.9 gauge
Finish	Polished
Min. Base Unit	600mm
Waste Hole Size	1 x 92mm

Sink
Waste kit **BSS1/**
Included

0.9

600



Ø 450mm Single Bowl Inset Sink

Main Bowl Size	Ø 380 x 180mm
Material	18/10 stainless steel – 0.6 gauge
Finish	Brushed
Min. Base Unit	500mm
Waste Hole Size	1 x 92mm

Sink
Waste kit **RB450BF/**
WKIT09/ (Sold separately)

0.6

500



Ø 450mm Single Bowl Inset Drainer

Main Bowl Size	Ø 380 x 45mm
Material	18/10 stainless steel – 0.6 gauge
Finish	Brushed
Min. Base Unit	500mm
Waste Hole Size	1 x 92mm

Sink
Waste kit **RD450BF/**
WSPARE09/ (Sold separately)

0.6

500

SINGLE BOWLS

10
YEAR
WARRANTY



500 x 500mm Single Bowl Inset Sink

Main Bowl Size	430 x 380 x 205mm
Material	18/10 stainless steel – 0.6 gauge
Finish	Satin
Min. Base Unit	500mm
Waste Hole Size	1 x 92mm
Tap Hole Size	1 x 35mm

Sink
Waste kit

**AL500/
WAST09/** (Sold separately)

0.6

500

UNDERMOUNTS



450 x 430mm Single Bowl Undermount Sink

Main Bowl Size	420 x 400 x 175mm
Material	18/10 stainless steel – 0.7 gauge
Finish	Satin
Min. Base Unit	500mm
Waste Hole Size	1 x 92mm

Sink
Waste kit

**LUB42/
WAST09/** (Sold separately)

0.7

500



640 x 493mm 1.5 Bowl Undermount Sink

Main Bowl Size	340 x 410 x 150mm
Second Bowl Size	175 x 320 x 80mm
Material	18/10 stainless steel – 0.7 gauge
Finish	Satin
Min. Base Unit	500mm
Waste Hole Size	2 x 92mm

Sink
Waste kit

**LUB3417/
WAST04/** (Sold separately)

0.7

600

R

SINK & TAP PACKS

Sink and tap packs include sink,
tap and compatible waste kit

TAP
5
YEAR
WARRANTY

SINK
10
YEAR
WARRANTY

NIMBUS SINGLE BOWL PACK OPTIONS



1000 x 500mm – Polished Finish

AVAILABLE PACK COMBINATIONS:



AQUAMONO 40
Pack code:
NIM1051/TMO40



**AQUASWAN
SINGLE**
Pack code:
NIM1051/TSWSL1



**AQUASWAN
DUAL**
Pack code:
NIM1051/TSW1



AQUATWIN
Pack code:
NIM1051/TWN1

SEATTLE SINGLE BOWL PACK OPTIONS



950 x 508mm – Polished Finish

AVAILABLE PACK COMBINATIONS:



AQUAMONO 40
Pack code:
SE9501POL/TMO40



**AQUASWAN
SINGLE**
Pack code:
SE9501POL/TSWSL1



**AQUASWAN
DUAL**
Pack code:
SE9501POL/TSW1



AQUATWIN
Pack code:
SE9501POL/TWN1

ALBION SINGLE BOWL PACK OPTIONS



950 x 508mm – Polished Finish

AVAILABLE PACK COMBINATIONS:



AQUAMONO 40
Pack code:
AL9501/TMO40



AQUAFLOW 1
Pack code:
AL9501/TAF1-AN



**AQUASWAN
SINGLE**
Pack code:
AL9501/TSWSL1



AQUASWAN DUAL
Pack code:
AL9501/TSW1



AQUATWIN
Pack code:
AL9501/TWN1

EUROLINE SINGLE BOWL PACK OPTIONS



950 x 508mm – Polished Finish

AVAILABLE PACK COMBINATIONS:



AQUAMONO 40
Pack code:
EL9501/TMO40



AQUADRIFT
Pack code:
EL9501/TDR1



AQUATWIN
Pack code:
EL9501/TWN1



All featured taps are WRAS approved

SINK & TAP PACKS

Sink and tap packs include sink, tap and compatible waste kit

TAP
5
YEAR
WARRANTY

SINK
10
YEAR
WARRANTY

NIMBUS 1.5 BOWL PACK OPTIONS



1000 x 500mm – Polished Finish

AVAILABLE PACK COMBINATIONS:



AQUAMONO 40
Pack code:
NIM1052/TMO40



AQUASWAN SINGLE
Pack code:
NIM1052/TSWSL1



AQUASWAN DUAL
Pack code:
NIM1052/TSW1



AQUATWIN
Pack code:
NIM1052/TWN1

EUROLINE SINGLE BOWL PACK OPTIONS



950 x 508mm – Satin Finish

AVAILABLE PACK COMBINATIONS:



AQUAMONO 40
Pack code:
EL9501NC/TMO40



AQUADRIFT
Pack code:
EL9501NC/TDR1

SEATTLE 1.5 BOWL PACK OPTIONS



950 x 508mm – Polished Finish

AVAILABLE PACK COMBINATIONS:



AQUAMONO 40
Pack code:
SE9502POL/TMO40



AQUASWAN SINGLE
Pack code:
SE9502POL/TSWSL1



AQUASWAN DUAL
Pack code:
SE9502POL/TSW1



AQUATWIN
Pack code:
SE9502POL/TWN1

ARIA SINGLE BOWL PACK OPTIONS



950 x 508mm – Satin Finish

AVAILABLE PACK COMBINATIONS:



AQUAMONO 40
Pack code:
ARA9501/TMO40



AQUAMONO 35
Pack code:
ARA9501/TMO35



AQUADRIFT
Pack code:
ARA9501/TDR1

ALBION 1.5 BOWL PACK OPTIONS



950 x 508mm – Polished Finish

AVAILABLE PACK COMBINATIONS:



AQUAMONO 40
Pack code:
AL9502/TMO40



AQUAFLOW 1
Pack code:
AL9502/
TAF1CM/-AN



AQUASWAN SINGLE
Pack code:
AL9502/TSWSL1



AQUASWAN DUAL
Pack code:
AL9502/TSW1



AQUATWIN
Pack code:
AL9502/TWN1

EATON SINGLE BOWL PACK OPTIONS



950 x 508mm – Satin Finish

AVAILABLE PACK COMBINATIONS:



AQUAMONO 40
Pack code:
EA9501/TMO40



AQUAMONO 35
Pack code:
EA9501/TMO35



AQUADRIFT
Pack code:
EA9501/TDR1

EUROLINE 1.5 BOWL PACK OPTIONS



950 x 508mm – Polished Finish

EL950289/ Features 2 x 92mm waste holes
EL9502/ Features 1 x 92mm & 1 x 52mm waste hole

AVAILABLE PACK COMBINATIONS:



AQUAMONO 40
Pack code:
EL950289/TMO40
EL9502/TMO40



AQUADRIFT
Pack code:
EL95089/TDR1
EL9502/TDR1



AQUATWIN
Pack code:
EL950289/TWN1

LINEAR SINGLE BOWL PACK OPTIONS



950 x 508mm – Satin Finish

AVAILABLE PACK COMBINATIONS:



AQUAMONO 40
Pack code:
LR9501/TMO40



AQUAMONO 35
Pack code:
LR9501/TMO35



AQUADRIFT
Pack code:
LR9501/TDR1



All featured taps are WRAS approved

SINK & TAP PACKS

Sink and tap packs include sink, tap and compatible waste kit

TAP
5
YEAR
WARRANTY

SINK
10
YEAR
WARRANTY

EUROLINE 1.5 BOWL PACK OPTIONS



950 x 508mm – Satin Finish

AVAILABLE PACK COMBINATIONS:



AQUAMONO 40
Pack code:
EL9502NC/TMO40



AQUADRIFT
Pack code:
EL9502NC/TDR1

LINEAR SINGLE BOWL PACK OPTIONS



950 x 508mm – Satin Finish

AVAILABLE PACK COMBINATIONS:



AQUAMONO 40
Pack code:
LR950/TMO40



AQUAMONO 35
Pack code:
LR950/TMO35



AQUADRIFT
Pack code:
LR950/TDR1

ARIA 1.5 BOWL PACK OPTIONS



950 x 508mm – Satin Finish

AVAILABLE PACK COMBINATIONS:



AQUAMONO 40
Pack code:
ARA9502/TMO40



AQUAMONO 35
Pack code:
ARA9502/TMO35



AQUADRIFT
Pack code:
ARA9502/TDR1

LINEAR COMPACT SINGLE BOWL PACK OPTIONS



950 x 508mm – Satin Finish

AVAILABLE PACK COMBINATIONS:



AQUAMONO 40
Pack code:
LR8001/TMO40



AQUAMONO 35
Pack code:
LR8001/TMO35



AQUADRIFT
Pack code:
LR8001/TDR1

EATON 1.5 BOWL PACK OPTIONS



950 x 508mm – Satin Finish

AVAILABLE PACK COMBINATIONS:



AQUAMONO 40
Pack code:
EA9502/TMO40



AQUAMONO 35
Pack code:
EA9502/TMO35



AQUADRIFT
Pack code:
EA9502/TDR1

LEXIN SINGLE BOWL PACK OPTIONS



950 x 508mm – Satin Finish

LE95/ - 0.6 gauge material
LN95/ - 0.9 gauge material

AVAILABLE PACK COMBINATIONS:



AQUAMONO 40
Pack code:
LE95/TMO40
LN95/TMO40



AQUAMONO 35
Pack code:
LE95/TMO35
LN95/TMO35

LINEAR 1.5 BOWL PACK OPTIONS



950 x 508mm – Satin Finish

AVAILABLE PACK COMBINATIONS:



AQUAMONO 40
Pack code:
LR9502/TMO40



AQUAMONO 35
Pack code:
LR9502/TMO35



AQUADRIFT
Pack code:
LR9502/TDR1

LEXIN SINGLE BOWL PACK OPTIONS



950 x 508mm – Satin Finish

AVAILABLE PACK COMBINATIONS:



PILLAR
Pack code:
LE95L/TPT1
(Left-hand drainer)
LE95R/TPT1
(Right-hand drainer)



DECK-MOUNTED
Pack code:
LE95L/TDM1
(Left-hand drainer)
LE95R/TDM1
(Right-hand drainer)



All featured taps are WRAS approved



NOV1051BL/, TAQSPIRITPOMB/

NEW TO 2023

Choose a granite sink from our small but broad appeal range, delivering modern colour and practicality with bowl size options.

Leisure's NEW Nova sink collection brings out the best technical qualities of granite, including resistance against heat, scratches and stains and ease of clean.



GRANITE

Constructed from innovative, patented material, this formulation has been perfected to give your granite sink a tactile texture and consistent finish.

KEY FEATURES



HYGENIC SURFACE



ANTI-IMPACT



ANTI-SHOCK



ANTI UV



LEISURE BRANDED

GRANITE SINKS





NOV1052BL/, TAQSTONESLBL/

NOVA

10
YEAR
WARRANTY

Nova combines style with functionality; the drainer with defined straight lines creates a contemporary look and larger bowl adds a practical design with room to accommodate large utensils, making it easier to use. If space is restricted, a compact version is also available within the range.

- Reverse drainer
- Compact option
- Waste kit included

1000 x 500mm Single Bowl Sink

Main Bowl Size	480 x 428 x 217mm
Material	Granite
Min. Base Unit	600mm
Drainer Position	Reversible
Waste Hole Size	1 x 90mm
Tap Hole Size	1 x 35mm

Sink
Waste kit

NOV1051__/
Included

*Available finishes:

- BL
Black
- GR
Grey
- WH
White

600



NEW



Black



White

NEW



Grey

White

860 x 500mm Compact Single Bowl Sink

Main Bowl Size	330 x 420 x 217mm
Material	Granite
Min. Base Unit	450mm
Drainer Position	Reversible
Waste Hole Size	1 x 90mm
Tap Hole Size	1 x 35mm

Sink
Waste kit

NOV8651__/
Included

*Available finishes:

- BL
Black
- GR
Grey
- WH
White

450



Black



Grey

NEW



1000 x 500mm 1.5 Bowl Sink

Main Bowl Size	320 x 420 x 217mm
Second Bowl Size	150 x 420 x 175mm
Material	Granite
Min. Base Unit	600mm
Drainer Position	Reversible
Waste Hole Size	1 x 90mm
Tap Hole Size	1 x 35mm

Sink
Waste kit

NOV1052__/
Included

*Available finishes:

- BL
Black
- GR
Grey
- WH
White

600



10
YEAR
WARRANTY



CLOX3216WH/

NEW TO 2023

Create the ultimate statement piece for any style of kitchen and work surface. With the addition of a fire-clay ceramic sink you are guaranteed a sink which will retain its high gloss colour and shine for a lifetime.

KEY FEATURES



EASY CLEAN SURFACE

A Leisure fire-clay ceramic sink is easy to clean, thanks to its smooth glazed surface, as microbes and stains just wipe away.



SUPERIOR STRENGTH

Thanks to the high gloss glazed finish, Leisure ceramic sinks are highly resistant to heat, stains and scratches.



CERAMIC SINKS

LOXLEY

10
YEAR
WARRANTY

Create a modern finished look with the addition of a Loxley fire-clay ceramic sink. Fitted as an undermount or inset sink, the Loxley will create a real focal point in any kitchen.

- 10 year warranty
- Inset or undermount installation

NEW



462 x 462mm Single Bowl Inset / Undermount Sink

Main Bowl Size	400 x 400 x 195mm
Material	Fire-clay ceramic
Min. Base Unit	500mm (inset)

500

Sink
Waste kit

CLOX4040WH/
Not included (see page 48)

NEW



595 x 460mm 1.5 Bowl Inset / Undermount Sink

Main Bowl Size	337 x 400 x 196mm
Second Bowl Size	183 x 400 x 176mm
Material	Fire-clay ceramic
Min. Base Unit	600mm (inset)

600

Sink
Waste kit

CLOX3216WH/
Not included (see page 48)



CPRM595WH/

PRIMROSE

10
YEAR
WARRANTY

Created to seamlessly blend modern living with a traditional country kitchen, the Primrose is a stylish alternative to a classic design.

- Weir style overflow
- Reversible

NEW



595 x 455mm Single Bowl Sink

Main Bowl Size	535 x 393 x 222mm
Overall height	252mm
Material	Fire-clay ceramic
Min. Base Unit	600mm
Drainer Position	Reversible

600

Sink
Waste kit

CPRM595WH/
Not included (see page 49)



CLOX4040WH/



TAQSPIRITPOMB/, NOV1051BL/

NEW TO 2023

Leisure are introducing a new generation of energy saving, broad appeal, and sustainably sourced taps for 2023.

All **NEW** products are branded, quality checked, assembled by hand, WRAS approved and come with:

- **Neoperl Aerator** – which helps to:
 - Control with pressure compensating the stream straightness and diameter
 - Reduce splash by aerating the stream and eliminating side spray
 - Save water and reduce energy costs
- **Easy Fit Fixing Kit** (inclusion of flexi tails across all standard taps).

Leisure has introduced a wide variety of tap designs and functions to suit every project type, including:



BROAD FINISH OFFERING

Taps available 3 new steel finishes, and 3 granite colours.



SUSTAINABILITY

Fully Sustainable Packaging, manufactured from 60% recycled materials and 100% recyclable.



FUNCTIONALITY

With a broad professional style offering.



DESIGN EXCELLENCE

Technical improvements & design updates to best selling Leisure models.

KEY FEATURES



ANTI-SPLASH SPOUT

The spout features a honeycomb aerator design which mixes air with water to emit a soft 'champagne like' water flow with no splash.



PULL-OUT HOSE

For ultimate food preparation and cleaning results choose a tap with a pull out hose, the majority of our designs feature a retractable hose which sits discreetly within the tap not altering its appearance from a standard tap.



WATER PRESSURE

The flow of water is determined from the water pressure available in your home, identifying the type of plumbing system already installed will help you choose a tap to suit your water pressure.



ALL PRESSURE

The majority of our taps have been designed to work with all plumbing systems, including low pressure hot water tanks. Look for the 'A' symbol opposite across our range which highlights compatibility with all water systems from 0.2 bar onwards.



MEDIUM PRESSURE

Some of our taps require plumbing systems with a higher bar pressure of 0.5 bar onwards, look for the 'M' symbol opposite against these types of taps.



HIGH PRESSURE

Taps with a 'H' symbol will require a plumbing system with 1.0 bar or higher when installing.



COLD START

An intuitive design and significant energy saver, reducing CO2 emissions into the atmosphere and retaining cash in your pocket.



FILTER

Delivers crystal clear, clean water thanks to the high quality carbon filter.



AQUANOMIC

Aquanomic taps have been developed to help comply with the water category of the code by restricting the flow rate to 5 litres per minute per tap.

PULL OUT TAPS



Choose our AquaPlay Pull Out Tap for ultimate food preparation and cleaning results. Thanks to its extendable hose, larger pots and pans which cannot fit easily in standard sinks can be cleaned easily.

NEW



AQUAPLAY PULL OUT

Min. Pressure	0.5 bar
Overall Height	381mm
Spout Reach	214mm
Hose length	250mm
Tap Code	TAQPLAYSLPO__/_

*Available finishes:



Chrome



Satin Bronze



Matt Black



NOV1052BL/,TAQSTONESLBL/

AQUASPIRIT 1933 TAP



Our new Leisure branded tap inspired by 1930's industrial era, with mottled body stamping and traditional finishes to suit an array of kitchen sink styles and finishes. Choose the AquaSpirit with pull out function for ultimate food preparation and cleaning results.

NEW



AQUASPIRIT PULL OUT

Min. Pressure	0.5 bar
Overall Height	400mm
Spout Reach	216mm
Hose length	250mm
Tap Code	TAQSPIRITPO__/_

*Available finishes:



Chrome



Satin Bronze



Matt Black



GRANITE TAPS



The minimalist AquaStone Granite Tap features a slim and elegant design, made from durable granite with a stylish finish. The easy to use single lever includes a cold start valve , which is specifically designed to avoid the unnecessary use of hot water, helping you save on energy. Each side lever tap uses the latest 'Cold Start' technology; a new generation of energy saving.

NEW



AQUASTONE

Min. Pressure	0.5 bar
Overall Height	419mm
Spout Reach	212mm
Hose length	365mm
Tap Code	TAQSTONESL__/_

*Available finishes:



Black



Grey



White



AQUANOMIC TAPS



5
YEAR
WARRANTY

Fitted with a flow restrictor, the Aquanomic taps have been developed to help comply with the water category of the code by restricting the flow rate to 5 litres per minute per tap. The amount of water usage in the home is monitored and by using an Aquanomic tap, will help comply with these regulations.

All of our Aquanomic Taps are also available as Standard by removing the flow restrictor.

NEW



AQUAPLAY

Min. Pressure	0.5 bar
Overall Height	334mm
Spout Reach	181mm
Hose length	250mm
Tap Code	TAQPLAYSL_/-AN

*Available finishes:

CM

SB

MB

Chrome

Satin Bronze

Matt Black

Available as standard monobloc in all 3 finishes.



NEW



AQUAFORM

Min. Pressure	0.5 bar
Overall Height	310mm
Spout Reach	192mm
Hose length	365mm
Tap Code	TAQFORM_/-AN

*Available finishes:

CM

SB

MB

Chrome

Satin Bronze

Matt Black

Available as standard monobloc in all 3 finishes.



NEW



AQUAFOCUS

Min. Pressure	0.5 bar
Overall Height	367mm
Spout Reach	194mm
Hose length	365mm
Tap Code	TAQFOCUS_/-AN

*Available finishes:

CM

SB

MB

Chrome

Satin Bronze

Matt Black

Available as standard monobloc in all 3 finishes.




AQUANOMIC TAPS




5
YEAR
WARRANTY

NEW




AQUAPACE 40

Finish	Chrome
Min. Pressure	0.2 bar
Overall Height	153mm
Spout Reach	227mm
Tap Code	TAQPACE40/-AN



NEW



AQUATECH

Min. Pressure	0.5 bar
Overall Height	334mm
Spout Reach	197mm
Hose length	250mm
Tap Code	TAQTECHSL_/-AN

*Available finishes:

CM

SB




MB

Chrome

Satin Bronze

Matt Black

Available as standard monobloc in all 3 finishes.



NEW



AQUAPACE 35

Finish	Chrome
Min. Pressure	0.2 bar
Overall Height	141 mm
Spout Reach	207mm
Tap Code	TAQPACE35/-AN

FILTER TAP



5
YEAR
WARRANTY

Leisure's AquaClear Filter Tap delivers crystal clear, clean water thanks to the high quality carbon filter, built in to reduce impurities and deliver fresh tasting water. Each filter delivers 2,500 litres of water and can be easily replaced when needed.

NEW



AQUACLEAR

Min. Pressure	0.3 bar
Overall Height	343mm
Spout Reach	194mm
Hose length	250mm
Tap Code	TAQCLEAR_/-FIL

*Available finishes:

CM

SS

Chrome

Satin Steel





CLOX4040WH/, TAQSENSESS/

STANDARD TAPS



*Available finishes:



Chrome Satin Steel



Bronze

AQUASENSE

Finish	Chrome
Min. Pressure	0.3 bar
Overall Height	354mm
Spout Reach	194mm
Tap Code	TAQSENSE__/_



*Available finishes:



Chrome Satin Steel

AQUACLEAR

Finish	Chrome
Min. Pressure	0.3 bar
Overall Height	341mm
Spout Reach	194mm
Tap Code	TAQCLEAR__/_



STANDARD TAPS



AQUADECK LEVER



Finish	Chrome
Min. Pressure	0.1 bar
Overall Height	177mm
Spout Reach	162mm
Tap Code	TAQDECKCM/-LV



AQUADECK



Finish	Chrome
Min. Pressure	0.1 bar
Overall Height	177mm
Spout Reach	162mm
Tap Code	TAQDECKCM/_



AQUAPILLAR LEVER



Finish	Chrome
Min. Pressure	0.1 bar
Overall Height	177mm
Spout Reach	162mm
Tap Code	TAQPILLARCM/-LV



AQUAPILLAR



Finish	Chrome
Min. Pressure	0.1 bar
Overall Height	151mm
Spout Reach	84mm
Tap Code	TAQPILLARCM/_



AQUAPACE 35



Finish	Chrome
Min. Pressure	0.2 bar
Overall Height	141mm
Spout Reach	207mm
Tap Code	TAQPACE35CM/_



AQUAPACE 40



Finish	Chrome
Min. Pressure	0.2 bar
Overall Height	153mm
Spout Reach	227mm
Tap Code	TAQPACE40CM/_



STANDARD TAPS



AQUAFLAIR

Finish	Chrome
Min. Pressure	0.2 bar
Overall Height	363mm
Spout Reach	207mm
Tap Code	TFR1CM/



AQUASTEM

Finish	Chrome
Min. Pressure	0.2 bar
Overall Height	268mm
Spout Reach	185mm
Tap Code	TST1CM/



AQUASWAN SINGLE LEVER

Finish	Chrome
Min. Pressure	0.2 bar
Overall Height	373mm
Spout Reach	207mm
Tap Code	TSWSL1CM/



AQUASWAN

Finish	Chrome
Min. Pressure	0.2 bar
Overall Height	394mm
Spout Reach	208mm
Tap Code	TSW1CM/



AQUATWIN

Finish	Chrome
Min. Pressure	0.2 bar
Overall Height	330mm
Spout Reach	233mm
Tap Code	TWN1CM/



AQUADRIFT

Finish	Chrome
Min. Pressure	0.2 bar
Overall Height	212mm
Spout Reach	224mm
Tap Code	TDR1CM/



STANDARD TAPS



NEW



AQUABASE

Finish	Chrome
Min. Pressure	0.5 bar
Overall Height	222mm
Spout Reach	224mm
Tap Code	TAQBASECM/



NEW



AQUAFORM 2

Finish	Chrome
Min. Pressure	0.5 bar
Overall Height	288mm
Spout Reach	192mm
Tap Code	TAQFORM2CM/



NEW



AQUASWAN 2

Finish	Chrome
Min. Pressure	0.5 bar
Overall Height	334mm
Spout Reach	181mm
Tap Code	TAQSWAN2CM/



AQUAMONO 35

Finish	Chrome
Min. Pressure	0.2 bar
Overall Height	154mm
Spout Reach	230mm
Tap Code	TMO35CM/




AQUAMONO 40


Finish	Chrome
Min. Pressure	0.2 bar
Overall Height	148mm
Spout Reach	225mm
Tap Code	TMO40CM/




ACCESSORIES



SOAP DISPENSER
Code: **SOAPDIS/CM**

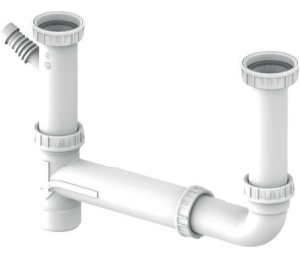


DRAINING BASKET
Code: **KA12SS/** (B)




STRAINER BOWL
Code: **KA17SS/** (C)
Code: **KA26SS/** (D)
Code: **KA28SS/** (E)


PLUMB KITS




1 1/2" BSP connecting pipe for 1.5 bowl sinks
Code: **WSPARE38/**



1 1/2" BSP space saving plumbing kit for single bowl sinks
Code: **WKIT26/**



1 1/2" BSP space saving plumbing kit for 1.5/double bowl sinks
Code: **WKIT27/**



1 1/2" BSP plumbing kit for 1.5/double bowl sinks
Code: **WSPARE29/**

WASTE KITS

BASKET STRAINER WASTE KITS



2 x 90mm basket strainer waste and overflow kit for **CLOX4040WH/**
Code: **WKIT15/**



1 x 90mm basket strainer waste and overflow kit for **CLOX3216WH/**
Code: **WKIT15/ + WSPARE09/**

WASTE KITS

BASKET STRAINER WASTE KITS



1 x 89mm basket strainer waste and overflow kit for single bowl sinks
1 1/2" BSP
Code: **WAST09/**



2 x 89mm basket strainer wastes and overflow kit for 1.5 bowl sinks
1 2/" BSP
Code: **WAST23/**



2 x 89mm basket strainer wastes, overflow kit & connecting pipe for 1.5 bowl sinks
1 2/" BSP
Code: **WAST04/**



2 x 89mm basket strainer wastes, overflow kit & full plumbing kit for 1.5 bowl sinks
1 2/" BSP
Code: **WAST03/**

PLUG WASTE KITS



1 x 60mm plug waste and overflow kit for single bowl sinks
1 1/2" BSP
Code: **WKIT05/**



1 x 60mm plug waste, chain stay and overflow kit for single bowl sinks
1 1/2" BSP
Code: **WKIT17/**



1 x 60mm plug waste and overflow kit for single bowl sinks
1 1/2" BSP
Code: **WKIT07/**



1 x 89mm plug waste and overflow kit for single bowl sinks
1 1/2" BSP
Code: **WKIT16/**



1 x 89mm plug waste, 1 x 60mm plug waste and overflow kit for 1.5 bowl sinks
1 1/2" BSP
Code: **WKIT06/**



2 x 89mm plug wastes and overflow kit for 1.5 bowl sinks
1 1/2" BSP
Code: **WKIT18/**



1 x 60mm basket strainer waste and overflow kit for **CPRM595WH/**
Code: **WKIT13/**

WASTE DISPOSAL UNITS

Clean, hygienic and safe to use, our waste disposal units are easy to install and compatible with most of our sinks, all of which include the following features:

- **Bio Shield Antimicrobial Protection** – a hygienic agent which inhibits the growth of a wide range of micro organisms and provides protection against odours.
- **Turntable Operation** – no knives or blades are used thanks to the turntable included which uses generated centrifugal force to hurl waste against the grinding ring which shreds the waste into fine pieces.
- **Torque Master** – a balanced grinding system which provides superior torque speed with less vibration and noise, providing a longer life system.
- **Sound Shell** – protected with an outer shell which reduces noise levels when the waste disposal unit is in operation.
- **Continuous Feed Function** – mains operated controlled by a switch.



ECONOMY 500

Suitable for small households
2 year guarantee
Code: **WDU500/**



STANDARD 700

Suitable for small to medium households
3 year guarantee
Code: **WDU700/**



MID DUTY 750

Suitable for large households
3 year guarantee
Code: **WDU750/**



HEAVY DUTY 800

Suitable for large and busy households
4 year warranty
Code: **WDU800/**



EA9052/

FIRE-CLAY CERAMIC SINKS

	Primrose Belfast CPRM595WH/	Loxley CLOX3216WH/	Loxley CRUB4040WH/
Drainer Position	-	Right Hand	-
No. of Bowls	1	1.5	1
Min. Base Unit (mm)	600	600 inset 650 u/mount	500
Overall Length (mm)	595	595	462
Overall Width (mm)	455	460	462
Cutout Size Length (mm)	-	-	-
Cutout Size Width (mm)	-	-	-
Main Bowl Length (mm)	535	337	400
Main Bowl Width (mm)	395	400	400
Main Bowl Depth (mm)	222	196	195
Second Bowl Length (mm)	-	183	-
Second Bowl Width (mm)	-	400	-
Second Bowl Depth (mm)	-	176	-
Material	Fire-clay	Fire-clay	Fire-clay
Gauge (mm)	-	-	-
Finish Drainer	-	-	-
Finish Bowl	-	-	-
Waste Size Ø (mm)	1 x 60	2 x 90	1 x 90
Compatible Waste Kit	BSW	BSW	BSW
Tap Hole Size Ø (mm)	-	-	-
Guarantee (years)	10	10	10

*Loxley bowls can be installed as inset or undermount, please visit www.leisuresinks.co.uk for cut out dimensions

GRANITE SINKS

	Nova NOV1051_/	Nova NOV1052_/	Nova NOV8651_/
Drainer Position	Reversible	Reversible	Reversible
No. of Bowls	1	2	1
Min. Base Unit (mm)	600	600	450
Overall Length (mm)	1000	1000	860
Overall Width (mm)	500	500	500
Cutout Size Length (mm)	980	980	840
Cutout Size Width (mm)	480	480	480
Main Bowl Length (mm)	480	318	330
Main Bowl Width (mm)	428	417	425
Main Bowl Depth (mm)	217	217	217
Second Bowl Length (mm)	-	148	-
Second Bowl Width (mm)	-	340	-
Second Bowl Depth (mm)	-	175	-
Material	Granite	Granite	Granite
Gauge (mm)	-	-	-
Finish Drainer	-	-	-
Finish Bowl	-	-	-
Waste Size Ø (mm)	1 x 90	1 x 90	1 x 90
Compatible Waste Kit	Included	Included	Included
Tap Hole Size Ø (mm)	1 x 35	1 x 35	1 x 35
Guarantee (years)	10	10	10

STAINLESS STEEL INSET SINKS WITH DRAINERS

	Albion AL8001/	Albion AL9501/	Albion AL9502/	Aqualine AQ9851/	Aqualine AQ9852/	Aria ARA9501/	Aria ARA9502/	Axel AX860/	Compact CPTRD580/	Compact CPTSQ580/
Drainer Position	Reversible	Reversible	Reversible	Reversible	Reversible	Reversible	Reversible	Reversible	Reversible	Reversible
No. of Bowls	1	1	1 ½	1	1 ½	1	1 ½	1	1	1
Min. Base Unit (mm)	500	500	600	500	600	500	600	500	450	500
Overall Length (mm)	800	950	950	985	985	950	950	860	580	580
Overall Width (mm)	508	508	508	508	508	508	508	500	450	480
Cutout Size Length (mm)	780	930	930	965	965	930	930	840	560	560
Cutout Size Width (mm)	488	488	488	488	488	488	488	480	430	460
Main Bowl Length (mm)	360	360	360	350	350	360	340	340	Ø 370	355
Main Bowl Width (mm)	424	424	424	420	420	424	424	400	Ø 370	405
Main Bowl Depth (mm)	155	155	155	165	165	150	150	200	175	185
Second Bowl Length (mm)	-	-	151	-	156	-	172	-	-	-
Second Bowl Width (mm)	-	-	300	-	300	-	290	-	-	-
Second Bowl Depth (mm)	-	-	120	-	117	-	80	-	-	-
Material	18/10 SS	18/10 SS	18/10 SS	18/10 SS	18/10 SS	18/10 SS	18/10 SS	18/10 SS	18/10 SS	18/10 SS
Gauge (mm)	0.7	0.7	0.7	0.8	0.8	0.7	0.7	0.6	0.6	0.6
Finish Drainer	Polished	Polished	Polished	Polished	Polished	Bright	Bright	Satin	Satin	Satin
Finish Bowl	Polished	Polished	Polished	Polished	Polished	Satin	Satin	Satin	Satin	Satin
Waste Size Ø (mm)	1 x 92	1 x 92	2 x 92	1 x 92	2 x 92	1 x 92	2 x 92	1 x 92	1 x 92	1 x 92
Compatible Waste Kit	WAST09/	WAST09/	WAST04/	WAST10/	WAST04/	WAST09/	WAST04/	WAST09/	WAST09/	WAST09/
Tap Hole Size Ø (mm)	1 x 35	1 x 35	1 x 35	1 x 35	1 x 35	1 x 35	1 x 35	1 x 35	1 x 35	1 x 35
Guarantee (years)	10	10	10	10	10	10	10	10	10	10

* *Slight modification required to cabinet walls when fitting into a 600mm cabinet

STAINLESS STEEL INSET SINKS WITH DRAINERS

	Euroline EL9502/	Euroline EL9502/NC	Euroline EL950289/	Euroline EL950289NC/	Lexin LN95/	Lexin LE95/	Lexin LE95SB/	Lexin LN95_/_	Lexin LE95_/_	Lexin LE95_SB/
Drainer Position	Reversible	Reversible	Reversible	Reversible	Reversible	Reversible	Reversible	Handed	Handed	Handed
No. of Bowls	1 ½	1 ½	1 ½	1 ½	1	1	1	1	1	1
Min. Base Unit (mm)	600	600	600	600	500	500	500	500	500	500
Overall Length (mm)	950	950	950	950	950	950	950	950	950	950
Overall Width (mm)	508	508	508	508	508	508	508	508	508	508
Cutout Size Length (mm)	930	930	930	930	930	930	930	930	930	930
Cutout Size Width (mm)	488	488	488	488	488	488	488	488	488	488
Main Bowl Length (mm)	340	340	340	340	420	420	420	420	420	420
Main Bowl Width (mm)	424	424	424	424	350	350	350	350	350	350
Main Bowl Depth (mm)	150	150	150	150	180	160	120	180	160	120
Second Bowl Length (mm)	156	156	156	156	-	-	-	-	-	-
Second Bowl Width (mm)	300	300	300	300	-	-	-	-	-	-
Second Bowl Depth (mm)	120	120	120	120	-	-	-	-	-	-
Material	18/10 SS	18/10 SS	18/10 SS	18/10 SS	18/10 SS	18/10 SS	18/10 SS	18/10 SS	18/10 SS	18/10 SS
Gauge (mm)	0.7	0.7	0.7	0.7	0.9	0.6	0.6	0.9	0.6	0.6
Finish Drainer	Polished	Bright	Polished	Bright	Bright	Bright	Bright	Bright	Bright	Bright
Finish Bowl	Polished	Satin	Polished	Satin	Satin	Satin	Satin	Satin	Satin	Satin
Waste Size Ø (mm)	1 x 92, 1 x 52	1 x 92, 1 x 52	2 x 92	2 x 92	1 x 52	1 x 52	1 x 52	1 x 52	1 x 52	1 x 52
Compatible Waste Kit	WKIT06/	WKIT06/	WAST04/	WAST04/	WKIT05/ or WKIT17/	WKIT05/ or WKIT17/	WKIT05/ or WKIT17/	WKIT05/ or WKIT17/	WKIT05/ or WKIT17/	WKIT05/ or WKIT17/
Tap Hole Size Ø (mm)	1 x 35	1 x 35	1 x 35	1 x 35	1 x 35	1 x 35	1 x 35	2 x 31	2 x 31	2 x 31
Guarantee (years)	10	10	10	10	10	10	10	10	10	10

* *Slight modification required to cabinet walls when fitting into a 600mm cabinet

Contour CN950/	Contract LC105_/_	Contract LC106_/_	Eaton EA9501/	Eaton EA9502/	Euroline EL6501/ POL	Euroline EL6501/NC	Euroline EL650/	Euroline EL860/POL	Euroline EL860/NC	Euroline EL9501/	Euroline EL9501/NC
Reversible	Handed	Handed	Reversible	Reversible	Reversible	Reversible	Reversible	Reversible	Reversible	Reversible	Reversible
1	1	1	1	1 ½	1	1	1 ½	1	1	1	1
600	1000	1000	500	600	450	450	600	450	450	450	450
950	1000	1000	950	950	647	647	647	860	860	950	950
508	500	600	508	508	508	508	508	435	435	508	508
930	-	-	930	930	627	627	627	840	840	930	930
488	-	-	488	488	488	488	488	415	415	488	488
420	420	420	420	340	340	340	340	376	376	340	340
400	350	400	350	410	424	424	424	351	351	424	424
180	160	160	150	150	155	155	155	140	140	150	150
-	-	-	-	175	-	-	156	-	-	-	-
-	-	-	-	320	-	-	300	-	-	-	-
-	-	-	-	80	-	-	125	-	-	-	-
18/10 SS	18/10 SS	18/10 SS	18/10 SS	18/10 SS	18/10 SS	18/10 SS	18/10 SS	18/10 SS	18/10 SS	18/10 SS	18/10 SS
0.9	0.6	0.6	0.6	0.7	0.7	0.7	0.7	0.6	0.6	0.7	0.7
Polished	Bright	Bright	Bright	Bright	Polished	Bright	Polished	Polished	Bright	Polished	Bright
Polished	Satin	Satin	Satin	Satin	Polished	Satin	Polished	Polished	Satin	Polished	Satin
1 x 92	1 x 52	1 x 52	1 x 92	2 x 92	1 x 92	1 x 92	2 x 92	1 x 52	1 x 52	1 x 92	1 x 92
WAST09/	WKIT05/ or WKIT17/	WKIT05/ or WKIT17/	WAST09/	WAST04/	WAST09/	WAST09/	WAST04/	WKIT07/	WKIT07/	WAST10/	WAST10/
1 x 35	2 x 31	2 x 31	1 x 35	1 x 35	1 x 35	1 x 35	1 x 35	1 x 35	1 x 35	1 x 35	1 x 35
10	10	10	10	10	10	10	10	10	10	10	10

[Continued on next page](#)

STAINLESS STEEL INSET SINKS WITH DRAINERS

	Linear XS LN9501XSPOL/	Linear XS LR950XS/	Linear XS LR9501XS/	Luxe LX155/	Luxe LX155_/	Luxe LX84/	Nimbus NIM1051/	Nimbus NIM1052/	Proline PL9852_/	Seattle SE9501POL/
Drainer Position	Reversible	Reversible	Reversible	-	Handed	-	Reversible	Reversible	Handed	Reversible
No. of Bowls	1	1	1	1	2	2	1	1½	1½	1
Min. Base Unit (mm)	600	600	600	500	1000	1000	600	600*	600	500
Overall Length (mm)	950	950	950	1500	1500	2120	1000	1000	985	950
Overall Width (mm)	508	508	508	508	508	460	500	500	508	508
Cutout Size Length (mm)	930	930	930	1480	1480	2100	974	974	965	930
Cutout Size Width (mm)	488	488	488	488	488	440	474	474	488	488
Main Bowl Length (mm)	420	420	420	420	420	420	465	350	350	360
Main Bowl Width (mm)	400	400	400	350	400	350	415	415	420	424
Main Bowl Depth (mm)	180	160	160	190	190	190	215	190	190	155
Second Bowl Length (mm)	-	-	-	-	420	420	-	160	156	-
Second Bowl Width (mm)	-	-	-	-	350	350	-	285	342	-
Second Bowl Depth (mm)	-	-	-	-	190	190	-	120	120	-
Material	18/10 SS	18/10 SS	18/10 SS	18/10 SS	18/10 SS	18/10 SS	18/10 SS	18/10 SS	18/10 SS	18/10 SS
Gauge (mm)	0.9	0.6	0.7	0.9	0.9	0.9	0.8	0.8	0.9	0.7
Finish Drainer	Polished	Bright	Bright	Polished	Polished	Polished	Polished	Polished	Polished	Polished
Finish Bowl	Polished	Satin	Satin	Polished	Polished	Polished	Polished	Polished	Polished	Polished
Waste Size Ø (mm)	1 x 92	1 x 52	1 x 92	1 x 92	2 x 92	2 x 92	1 x 92	2 x 92	2 x 92	1 x 92
Compatible Waste Kit	Included	WKIT05/ or WKIT17/	WAST09/	Included	Included	Included	WAST09/	WAST04/	Included	WAST09/
Tap Hole Size Ø (mm)	1 x 35	1 x 35	1 x 35	1 x 35	1 x 35	1 x 35	1 x 35	1 x 35	1 x 35	1 x 35
Guarantee (years)	10	10	10	10	10	10	10	10	10	10

STAINLESS STEEL
UNDERMOUNT SINKS

	Linear LUB42/	Linear LUB3417/
Drainer Position	-	Reversible
No. of Bowls	1	1½
Min. Base Unit (mm)	500	600
Overall Length (mm)	450	640
Overall Width (mm)	430	493
Cutout Size Length (mm)	420	600
Cutout Size Width (mm)	400	453
Main Bowl Length (mm)	420	340
Main Bowl Width (mm)	400	410
Main Bowl Depth (mm)	175	150
Second Bowl Length (mm)	-	175
Second Bowl Width (mm)	-	320
Second Bowl Depth (mm)	-	80
Material	18/10 SS	18/10 SS
Gauge (mm)	0.7	0.7
Finish Drainer	-	-
Finish Bowl	Satin	Satin
Waste Size Ø (mm)	1 x 92	2 x 92
Compatible Waste Kit	WAST09/	WAST04/
Tap Hole Size Ø (mm)	-	-
Guarantee (years)	10	10

TAPS - AQUANOMIC LOW FLOW RATE

	Aquafocus TAQFOCUS_ /-AN	Aquaform TAQFORM_ /-AN	Aquatech TAQTECHSL _/-AN	Aquaplay TAQPLAYSL_ /-AN	Aquapace TAQPACE35CM /-AN	Aquapace TAQPACE40CM /-AN
Lever Type	Dual Lever	Dual Lever	Dual Lever	Single Lever	Single Lever	Single Lever
Min. Pressure (bar)	0.5	0.5	0.5	0.5	0.2	0.2
Max. Pressure (bar)	5	5	5	5	5	5
Overall Tap Height (mm)	367	310	334	334	141	153
Spout Exit Reach (mm)	194	192	197	181	207	227
Spout Exit Height (mm)	237	237	221	235	129	129
WRAS Approved	Yes	Yes	Yes	Yes	Yes	Yes
Guarantee (years)	5	5	5	5	5	5

FILTER TAPS

	Aquaclear TAQCLEAR_ /-FIL
Lever Type	Dual Lever
Min. Pressure (bar)	0.3
Max. Pressure (bar)	6
Overall Tap Height (mm)	343
Spout Exit Reach (mm)	194
Spout Exit Height (mm)	213
WRAS Approved	Yes
Guarantee (years)	5

TAPS

	Aquapillar TAQPILLARCM/
Lever Type	Single Lever
Min. Pressure (bar)	0.1
Max. Pressure (bar)	5
Overall Tap Height (mm)	151
Spout Exit Reach (mm)	84
Spout Exit Height (mm)	80
Centre Distance (mm)	-
WRAS Approved	Yes
Guarantee (years)	5

STAINLESS STEEL INSET SINGLE BOWL SINKS

	Albion AL500/	Round Bowl RB450BF/	Round Drainer RD450BF/	Single Bowl BSS40/	Single Bowl BSS1/
Drainer Position	-	-	-	-	-
No. of Bowls	1	1	1	1	1
Min. Base Unit (mm)	500	500	500	500	600
Overall Length (mm)	500	Ø 450	Ø 450	460	508
Overall Width (mm)	500	Ø 450	Ø 450	440	418
Cutout Size Length (mm)	480	Ø 430	Ø 430	440	488
Cutout Size Width (mm)	480	Ø 430	Ø 430	420	398
Main Bowl Length (mm)	430	Ø 380	Ø 380	420	470
Main Bowl Width (mm)	380	Ø 380	Ø 380	400	380
Main Bowl Depth (mm)	205	180	45	190	190
Second Bowl Length (mm)	-	-	-	-	-
Second Bowl Width (mm)	-	-	-	-	-
Second Bowl Depth (mm)	-	-	-	-	-
Material	18/10 SS	18/10 SS	18/10 SS	18/10 SS	18/10 SS
Gauge (mm)	0.6	0.6	0.6	0.8	0.9
Finish Drainer	-	-	-	-	-
Finish Bowl	Satin	Brushed	Brushed	Polished	Polished
Waste Size Ø (mm)	1 x 92	1 x 92	1 x 92	1 x 92	1 x 92
Compatible Waste Kit	WAST09/	WKIT28/	WSPARE9/	Included	Included
Tap Hole Size Ø (mm)	1 x 35	-	-	-	-
Guarantee (years)	10	10	10	10	10

TAPS

	Aquadrift TDR1CM/	Aquaflair TFR1CM/	Aquamono 40 TMO40CM/	Aquamono 35 TMO35CM/	Aquastem TST1CM/	Aquaswan TSWSL1CM/	Aquaswan TSW1CM/	Aquatwin TWN1CM/	Aquabase TAQBASECM/	Aquapace 35 TAQPACE35CM/
Lever Type	Dual Lever	Dual Lever	Single Lever	Single Lever	Single Lever	Single Lever	Dual Lever	Dual Lever	Dua Lever	Single Lever
Min. Pressure (bar)	0.2	0.2	0.2	0.2	0.2	0.2	0.2	0.2	0.2	0.2
Max. Pressure (bar)	6.5	6.5	6.5	6.5	6.5	6.5	6.5	6.5	5	5
Overall Tap Height (mm)	212	363	148	154	268	373	394	330	222	141
Spout Exit Reach (mm)	224	207	225	230	185	207	208	174	224	207
Spout Exit Height (mm)	181	239	124	129	210	245	265	233	186	120
Centre Distance (mm)	-	-	-	-	-	-	-	-	-	-
WRAS Approved	Yes	Yes	Yes	Yes	Yes	Yes	Yes	Yes	Yes	Yes
Guarantee (years)	5	5	5	5	5	5	5	5	5	5

Aquapillar Lever TAQPILLARCM/ -LV	Aquadeck TAQDECKCM/	Aquadeck Lever TAQDECKCM/ -LV	Aquasense TAQSENSE_/	Aquaplay Pull out TAQPLAYSLPO _/	Aquaspirit Pull out TAQSPIRITPO _/	Aquastone TAQSTONESL _/	Aquapace 40 TAQPACE40CM/	Aquaform 2 TAQFORM2CM/	Aquaswan 2 TAQSWAN2CM/	Aquaclear TAQCLEAR_/
Single Lever	Dual Lever	Dual Lever	Dual Lever	Single Lever	Dual Lever	Single Lever	Single Lever	Single Lever	Single Lever	Single Lever
0.1	0.1	0.1	0.3	0.5	0.5	0.5	0.2	0.5	0.5	0.3
5	5	5	5	5	5	5	5	5	5	5
151	177	177	354	381	400	419	153	288	334	341
84	162	162	194	214	216	212	227	192	181	181
80	146	146	224	223	215	215	129	215	235	211
-	-	-	-	-	-	-	-	-	-	-
Yes	Yes	Yes	Yes	Yes	Yes	Yes	Yes	Yes	Yes	Yes
5	5	5	5	5	5	5	5	5	5	5

Leisure continuously seeks improvements in specification, design and production of products and thus, alternations take place periodically. Whilst every effort is made to produce up-to-date literature, this brochure should not be regarded as an infallible guide to current specification, nor does it constitute an offer for the sale of any particular product.



MORE OPTIONS AVAILABLE WITH RANGEMASTER

Our sister brand, Rangemaster, offers an even wider portfolio of products designed to fulfil any project type and complement any style of kitchen scheme.

A wide selection of Granite, Fire-Clay Ceramic, Stainless Steel & PVD kitchen sinks are available in a variety of designs, sizes and colourways. Finish your sink with a Rangemaster tap, our comprehensive range of kitchen taps are available in multiple design types and finishes, providing ample choice to select from.

To find out more visit www.rangemaster.co.uk

RANGEmaster
Sinks & Taps



Scan to find out more

Trade Enquiries

+44 (0) 115 946 4000

tradesales@agarangemaster.co.uk

Meadow Lane, Long Eaton, Nottingham,
NG10 2GD, England

Consumer Enquiries

01926 457628

consumers@agarangemaster.co.uk

www.leisuresinks.co.uk